



Meeting all your access needs.
dormakaba products - an overview.

Our comprehensive portfolio

Innovative products, solutions and services – from a one-stop shop.

When entering or leaving a building or room, people often use dormakaba products and solutions to do so. From door solutions to master key systems, from customized access systems to flexible room solutions. We have been developing secure, trustworthy access solutions for buildings and rooms for over 150 years and offer you state-of-the-art solutions that are tailored to your individual requirements and security concepts.

Changes in the way we live, we work and build go hand in hand with an increased need for security. All sectors and all people are affected by this development. Public institutions and complex facilities like airports, hospitals, government buildings or banks need functional, flexible and attractive access systems. Furthermore industrial companies and infrastructure providers, administrations and the service sector are faced with the task of striking an optimum balance between productivity, economic efficiency and services.

Whether for particularly sensitive sectors or for areas with high people flow with dormakaba's adaptable access solutions you gain optimum security and efficiency for your processes. Our hardware components and software solutions are interoperable. Our systems can thus be easily integrated in your technical organization, conveniently managed and expanded. We support you with our expertise from advice and planning to implementation.



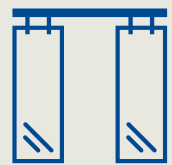
Door Hardware



Entrance Systems



**Electronic
Access & Data**



**Interior Glass
Systems**



**Mechanical
Key Systems**



Lodging Systems



Safe Locks



Service

Table of contents

- 3 Our comprehensive portfolio
- 6 Project planning and support
- 9 Design factor



11 Door hardware

- 16 Door closers – an overview
- 18 Slide channel door closer and hold-open system
- 26 Free-swing door closers
- 28 Rack-and-pinion door closers with scissor arm
- 30 Concealed door closer
- 32 Floor springs
- 35 System components and accessories
- 36 Door locks
- 37 Emergency escape locks – an overview
- 46 Emergency exit systems
- 64 Electrified door hardware
- 66 Panic hardware



179 Interior Glass Systems

- 182 Manual sliding door systems – an overview
- 188 Manual single-action and double-action door systems
- 188 Fittings for single-action and double-action door systems – an overview
- 196 Fittings for toughened glass assemblies – an overview
- 207 Access and room system
- 208 Horizontal sliding walls – an overview
- 214 Handles for sliding door, double-action and single-action door systems



217 Mechanical Key Systems

- 220 Master Key Systems & Planning
- 221 Reversible key systems – an overview
- 225 Optional versions for reversible key systems
- 228 Serrated key systems
- 229 Self-adjusting cylinders



69 Entrance Systems

- 72 Swing door operators – an overview
- 76 Automatic sliding doors
- 83 Sliding door operators
- 86 Curved sliding doors
- 87 Revolving doors
- 87 Revolving doors – an overview
- 94 Security revolving doors
- 97 Security turnstile
- 98 System components and accessories for Entrance Systems
- 102 Security interlocks
- 103 Security interlocks – an overview
- 108 Tripod turnstiles
- 110 Half-height turnstiles
- 112 Turnstiles
- 116 Sensor barriers
- 120 Speed gates
- 122 Swing doors
- 124 Pedestrian guiding bars
- 125 Reading posts



231 Lodging systems

- 234 Access management systems
- 235 Mobile access solutions
- 236 Electronic hotel locks
- 238 Perimeter access

127 Electronic Access & Data

- 130 Electronic cylinders
- 132 Electronic door locks
- 136 Card readers & peripherals
- 136 Compact and remote readers – an overview
- 141 Registration units – an overview
- 146 Access manager – an overview
- 152 Access Media and Badges
- 152 Media – an overview
- 156 Access control solutions
- 158 Access control solutions for Corporate
- 161 Access control solutions for SAP
- 163 Access control solutions for small and medium-sized enterprises
- 165 Access control solutions for small businesses and Residential
- 166 Time & Attendance
- 170 Shop floor data collection
- 171 Solutions for ERP systems
- 172 Interfacing solutions for third-party applications
- 173 Technology and function principles



241 Safe Locks

- 244 Electronic safe locks
- 250 Mechanical safe locks
- 252 Electronically controllable key locks
- 253 Safe deposit box locks
- 254 Bolt work
- 255 Other safe components and accessories
- 256 Handles and key rosettes
- 257 Dial & ring combinations

258 Service

260 Sustainability

262 dormakaba – our company

Project planning and support

How to always focus on essentials?

With a tailored advice focusing on your needs.



You need perfect protection for your property. Rugged technology that suits your respective requirements down to the ground. Easily adaptable systems that simplify your work flow and thus increase efficiency and cost-effectiveness. Solutions that you can easily and securely integrate into your planning or extension. Precisely, reliably, on-demand.

We offer you all of this from a single source. Our comprehensive consulting services allow you to carry out your project just the way you want. Based on your tasks, needs and wishes, our experienced experts draw up an exact profile of your requirements and then recommend bespoke solution concepts.



We support you with cross-system planning and implementation through our nationwide network of field staff - quickly and ably. At dormakaba you always have a dedicated point of contact who is familiar with your entire system and its individual components - for we believe in in-house connectivity and coordinated interfaces.

We advise and support you from planning to execution - personally, openly, as partners. We offer you technology that is proven in daily use across the globe. Innovations that give you the edge. And a specialised service that is never more than a call away.



Design in three letters: XEA

What XEA means to us: The XEA design language is based on a comprehensive integrated approach, consistently following our own principles of compatibility, high quality, innovation, meticulous detail and aesthetics across ten points. All under the premise of uniting essential forms, colours and finishes in a uniform look: XEA combines dormakaba's product and corporate collections to create a homogeneous design, which projects a recognizable idiom in terms of both content and looks.



Design factor



#1

Recognizable details.

Each product can be clearly identified as a dormakaba product by features such as our distinctive logo but above all through the interaction of the XEA elements.



#2

Intuitive symbols.

All symbols used are reduced to their essential elements, but are high-recognition and self-explanatory.



#3

Standardized finishes.

Four basic colours for each product to ensure that all combinations go together. The XEA colour numbering system brings clarity.



#4

Clear forms.

The integrated styling is a result of flat, two-dimensional surfaces. Radii and sharp edges contrast and complement each other.



#5

User-friendly operation.

The user interfaces follow a reduced, uniform design and are therefore recognizable. Operation is self-explanatory.



#6

Contrasting finishes.

Light and dark, matte and glossy finishes combine to create variety within the system. Individual function areas can be identified clearly in this way.



#7

Sturdy housing.

If products are encased in an all-round housing frame, it provides them with additional protection from external influences.



#8

Multi-layered compositions.

The construction reveals its value at first glance. You can see the quality of the material from the solid edging of the decorative front plate.



#9

LED indicator.

All applications are learned quickly across the product range, e.g. when LED light strips signal access, guide people or display the status.



#10

Individual design.

A system of materials and colours creates a broad spectrum of solutions to match any architectural style and more: XEA adds a touch of individual style.





Door hardware – door solutions from a single source

From convenient barrier-free door situations and individual fire protection to special systems for emergency and escape routes – dormakaba has the solution. Our unique, tailored product lines offer intelligent solutions for almost every purpose of your access requirement.



Door Hardware

Perfect technology works without barriers.

From a free-swing function to emergency escape locks: For all door users, easy opening and gentle closing immediately, and literally, "unlock" added value. This ease of use is enabled by intelligent, innovative dormakaba technology, which is used in all the products in our comprehensive door hardware portfolio. We are building on this by continuing to expand our range to include motorized, electronic and digital components. On this basis, we offer you a wide range of door solutions from a single source: specifically tailored to your needs and applicable for almost every door situation.





Door closers

Versatile modules: cam action door closers, with arm, integrated or in the floor, barrier-free, can be automated.



Door locks

Emergency escape locks, mechanic or motor-controlled, network-compatible – security in both directions.



Emergency exit systems

Secure door management in one system. Easy opening in an emergency, protection against everyday misuse.



Electrified door hardware

Electronically controlled door openers unlock doors as the situation demands. Universal retrofitting technology.



Panic hardware

Reliable and aesthetic, safety latch bolts or exit pads, standard-compliant for public institutions.

Door Hardware

Easy door opening in accordance with DIN SPEC 1104

40% less effort, 40% easier opening – the heart-shaped cam disc reduces effort to a minimum: Tried-and-tested EASY OPEN technology enables rapidly decreasing opening torque as per DIN SPEC 1104. This makes our cam action door closers barrier-free in accordance with DIN 18040, and not only extremely easy to open, but also capable of being closed slowly, if required: convenience that makes life easier for young and old.





Door closers

Door closers – an overview

Overhead door closers with slide rail							
Applications and functions General doors and widths	ITS 96 system ¹⁾	ITS 96 FL system ¹⁾	NEW TS 98 XEA system	TS 93 Contur system ¹⁾	TS 99 Contur system ¹⁾	NEW TS 92 XEA	TS 97 ¹⁾ Contur
≤ 950 mm							
≤ 1100 mm	●					●	●
≤ 1250 mm				●	●		
≤ 1400 mm	●	●	●				
≤ 1600 mm				●			
Double-action doors							
External doors opening outward			●	●			
Fire and smoke protection doors							
Freewheel function from > 0°		●			●		
Single-leaf	●	●	●	●	●	●	●
Single-leaf with electromechanical door holder	●		●	●			
Double-leaf	●	●	●	●	●		
Double-leaf with electromechanical door holder	●		●	●			
Functions							
Door closer power according to EN 1154	2-4, 3-6	3-6	1-6	2-5, 5-7	2-5	1-4	2-4
Infinitely adjustable door closer power	●	●	●	●	●	●	●
Infinitely adjustable closing speeds	●	●	●	●	●	●	●
Infinitely adjustable end stop	●	●	●	●	●		●
SoftFlow (closing area from 15° to 0°)			●			●	
Same design DIN left and DIN right	●	●	●	●	●	●	●
Holding unit (not for fire and smoke protection doors)	○	○	○	○	○	○	○
Delayed closing action			●	●			
Backcheck			●	●			
Mounting plate with universal hole pattern			●	●	●	●	
Mechanical opening limiter	●	●	○	○	○	○	●
EN 1154	●	●	●	●	●	●	●
EN 1155	●	●	●	●	●		
CE - marking for construction products	●	●	●	●	●	●	●
Decreasing opening torque according to DIN SPEC 1104; CEN/TR 15894	●	●	●	●		●	●
Compliance with the max. opening torque accord- ing to DIN 18040 up to a door width of (mm)	1100, 1250	1400*	1250	1250	1250*	1100	1100

● Standard ○ Optional * Because it is a freewheel door closer. ** Because it is a door-holding device.

1) You will find these products in the architects' catalog Öffnen & Schliessen/Trennen [Opening & Closing/Separation].

Overhead door closers with scissor arm			Floor springs	
TS 83 ¹⁾	TS 73 V ¹⁾	TS 73 EMF ¹⁾	BTS 80 system ¹⁾	BTS 75 V ¹⁾
	●	●	●	●
		●	●	
●		●	●	
●				
			●	●
●			●	
●	●		●	●
		●	●	
●	●		●	
		●	●	
3-6, 7	2-4	4-6	4-6	1-4
3-6	●			●
●	●	●	●	●
●	●	●		
●	●	●	●	
○	○			
○			●	
●	●		●	
○	○	○	●	●
●	●	●	●	●
●	●	●	●	●
1100	1000	1400**	1100	1100

Slide channel door closer system

TS 98 XEA system, TS 92 XEA



The new TS 98 XEA system boasts an impressive new design and new functionalities. It offers a high level of convenience for almost every single and double leaf door. The extended door closer power according to EN 1-6 enables a wider range of applications. The additional SoftFlow closing area means virtually silent closing. The system also impresses when it comes to mounting: Only one closing body is required for all types of mounting.

Simply effective:

- Very convenient to use, fully controlled locking, quiet
- One closing body for all four types of mounting, DIN-L/DIN-R
- Three different closing areas 180°–15°; 15°–0°; 7°–0°
- All adjustments can be conveniently made from the front
- For door leaf widths up to 1,400 mm
- Backcheck and delayed closing action as standard in all types of mounting
- XEA design
- Additional SoftFlow closing area for almost noiseless closing (15°–0°)



TS 98 XEA N/ TS 98 XEA EMF

- Single-leaf doors
- Electromechanical door holder



TS 98 XEA EMR/ TS 98 XEA UBIVIS

- Single-leaf doors
- Electromechanical door holder with integrated smoke detector panel



TS 98 XEA GSR/ TS 98 XEA GSR-EMF

- Single-leaf doors with door coordinators
- Electromechanical door holder



TS 98 XEA GSR-EMR/ TS 98 XEA GSR-EMR without EMF

- Double-leaf doors with door coordinators
- Electromechanical door holder with integrated smoke detector panel



TS 92 XEA

- Single-leaf doors
- Mounting on all-glass doors



For more information, see here:
www.dormakaba.xxx/xxx

Slide channel hold-open system

G-Ubivis XEA

The battery-operated slide channel hold-open system with integrated smoke detector for use on fire protection doors. The G-Ubivis XEA has been approved as a hold-open system by the German Institute for Building Technology, Berlin. Combined with approved dormakaba door closers, G-Ubivis XEA also means the perfect design.

Simply effective:

- Increased flexibility when retrofitting hold-open systems
- No wiring at 230 V
- Independence from upstream subsections
- According to DIN 18040 and DIN SPEC 1104/CEN/TR 15894
- Simple retrofitting and mounting without interfering with the building structure
- Attractive XEA design





For more information, see here:
www.dormakaba.xxx/xxx

Slide channel door closer system

TS 93 system

The modular slide channel door closer system with a wide range of variants for barrier-free construction.

Simply effective:

- With tried-and-tested EASY OPEN technology
- For door leaf widths up to 1,600 mm, single- and double-leaf doors
- Very convenient to use
- Suitable/approved for escape route and fire protection doors
- Door coordinators with integrated smoke detector panel



TS 93 N/TS 93 EMF

- Single-leaf doors
- Electromechanical door holder



TS 93 EMR

- Single-leaf doors
- Electromechanical door holder with integrated smoke detector panel



TS 93 GSR/GSR-EMF

- Double-leaf doors with door coordinators
- Electromechanical door holder



TS 93 GSR-EMR/ GSR-EMR/V

- Double-leaf doors with door coordinators
- Electromechanical door holder with integrated smoke detector panel



For more information, see here:
www.dormakaba.xxx/xxx

Slide channel door closer system

TS 92/TS 91

The universal slide channel door closer for standard doors.

Simply effective:

- With tried-and-tested EASY OPEN technology
- For door widths up to 1,100 mm (TS 92, EN 1–4) or 950 mm (TS 91, EN 3)
- For single and double leaf doors
- Very convenient to use
- For escape route and fire protection doors



For more information, see here:
www.dormakaba.xxx/xxx

TS 97

The smallest mounted door closer with slide channel in the business.

Simply effective:

- Compact, only 37 cm deep
- Uniform length of door closer and slide rail
- For door widths up to 1,100 mm (EN 2–4)
- With tried-and-tested EASY OPEN technology
- Very convenient to use
- High quality for upmarket interior design
- Quick and easy mounting



For more information, see here:
www.dormakaba.xxx/xxx

TS 90 Impulse

The basic slide channel door closer, which combines technical quality, economy and contemporary design.

Simply effective:

- With tried-and-tested EASY OPEN technology
- One closing body for all four types of mounting, DIN-L/DIN-R
- For door widths up to 1,100 mm
- Very convenient to use
- Suitable for interior doors
- Economical



For more information, see here:
www.dormakaba.xxx/xxx



Free-swing door closers

TS 99 system



The free-swing door closer enables almost resistance-free passage through fire protection doors. Thanks to the freewheel function, the door moves freely and is particularly suitable for barrier-free construction according to DIN 18040 or DIN SPEC 1104, in case of an alarm, however, only in combination with a smoke detector panel, otherwise this does not work.

The door closer TS 99 FL in the Contur design is a door-holding device with freewheel function, which is used together with a smoke detector system (dormakaba RMZ) as a hold-open system. In the event of an alarm or power failure, the door is securely closed by the door closer.

Simply effective:

- With tried-and-tested EASY OPEN technology
- Very convenient to use
- For door leaf widths up to 1,250 mm, single and double leaf doors
- Freewheel function from 0° door opening angle
- Adjustable door closer power EN 2–5



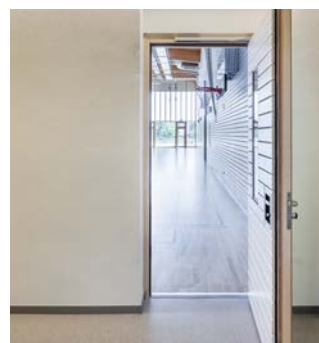
TS 99 FL

- Single-leaf doors
- Freewheel function



TS 99 FLR

- Single-leaf doors with freewheel function
- Integrated smoke detector panel



TS 99 FLR-K

- Single-leaf doors with freewheel function
- Integrated smoke detector panel



TS 99 FL GSR/ FL GSR-EMF 1/ FL GSR-EMR 1

- Double-leaf doors with door coordinators
- Integrated smoke detector panel



For more information, see here:
www.dormakaba.xxx/xxx

Rack-and-pinion door closers with scissor arm



TS 83

Convenient door closer with scissor arm and self-regulating backcheck.

Simply effective:

- For almost any door size and application (EN 3–6 and 7)
- Also available with enhanced corrosion protection for exterior doors
- Compact door closer construction and solid flat-form arm
- Broad functional scope – standard and optional
- Can be used on fire and smoke protection doors



For more information, see here:
www.dormakaba.xxx/xxx

TS 73 V

Versatile, compact door closer with scissor arm for doors in various designs and constructions.

Simply effective:

- Specially for interior fire and smoke protection doors (EN 2–4)
- Door leaf widths up to 1,100 mm
- Adjustable door closer power and speed
- One closing body for all four types of mounting, DIN-L/DIN-R
- Compact construction and timeless design



For more information, see here:
www.dormakaba.xxx/xxx

TS 72/TS 71

The universal door closer with scissor arm can easily be mounted directly on interior doors.

Simply effective:

- Adjustable door closer power EN 2–4
- Easy installation without mounting plate
- Compact design
- Economical solution for standard doors
- Adjustable end stop
- Timeless design



For more information, see here:
www.dormakaba.xxx/xxx

Concealed door closer

ITS 96

The ITS 96 system offers comprehensive solutions for the concealed installation of door closers. The EASY OPEN technology enables rapidly decreasing opening torque according to DIN SPEC 1104. In dormakaba ITS 96 door closers with EASY OPEN technology, the heart-shaped cam disc immediately and significantly reduces the opening torque. This means that children, the elderly or disabled people in particular can open the door with little effort.



ITS 96 N, simply effective:

- Numerous variants for barrier-free construction according to DIN SPEC 1104
- Easy opening with EASY OPEN technology
- Adjustable door closer power and closing speed
- For door leaf widths up to 1,400 mm
- Adjustable end stop that can be disabled
- Also available with door holder function

ITS 96 FL, simply effective:

- Freewheel function from 0° door opening angle
- For door leaf widths up to 1,400 mm
- For single- and double-leaf doors (on the active leaf)
- Can be combined with the standard ITS 96 slide rails
- Suitable for barrier-free construction according to DIN 18040



ITS 96 N

- Single-leaf doors
- For standard and fire protection doors

ITS 96 EMF

- Single-leaf doors
- Electromechanical door holder

ITS 96 GSR/ ITS 96 GSR-EMF

- Double-leaf doors
- Integrated door coordinators

ITS 96 FL

- Single- and double-leaf doors
- Resistance-free passage

ITS 96 FL GSR/ ITS 96 FL GSR-EMF 1

- Double-leaf doors on the active leaf
- Resistance-free passage



For more information, see here:
www.dormakaba.xxx/xxx
www.dormakaba.xxx/xxx

Floor springs

BTS 80 system, BTS 75 V

Whether normal, narrow or wide, DIN left, DIN right or double-action door – as universal floor springs, BTS 80 and BTS 75 V are designed for all types of doors. A wide range of accessories means they can be adapted to different door constructions and floor coverings. Thanks to their individual functions and their high quality, the floor springs reliably meet diverse requirements.

The BTS 80 floor spring system offers various function and application possibilities for single- and double-leaf doors. It is very convenient to use and can also be used for preventive fire protection. The system can be enhanced with an electro-hydraulic door holder or freewheel function.



BTS 80, simply effective:

- Concealed installation
- For single and double leaf doors
- For door leaf widths up to 1,400 mm
- For high door leaf weights up to 300 kg
- Numerous variants with door holder and freewheel functions
- Easy door opening according to DIN SPEC 1104

BTS 75 V, simply effective:

- Concealed installation
- Adjustable door closer power EN 1–4
- For door leaf widths up to 1,100 mm
- Including mechanical backcheck
- Easy door opening according to DIN SPEC 1104
- With integrated mounting level



BTS 80

- Preventive fire protection
- Up to 300 kg door leaf weight

BTS 80 BSR, BTS 80 BSR EMB, BTS 80 BSR FLB

- Double-leaf doors
- Door coordinators

BTS 80, BTS 80 F, BTS 80 EMB, BTS 80 FLB

- Single-leaf doors
- Modular system

BTS 75 V

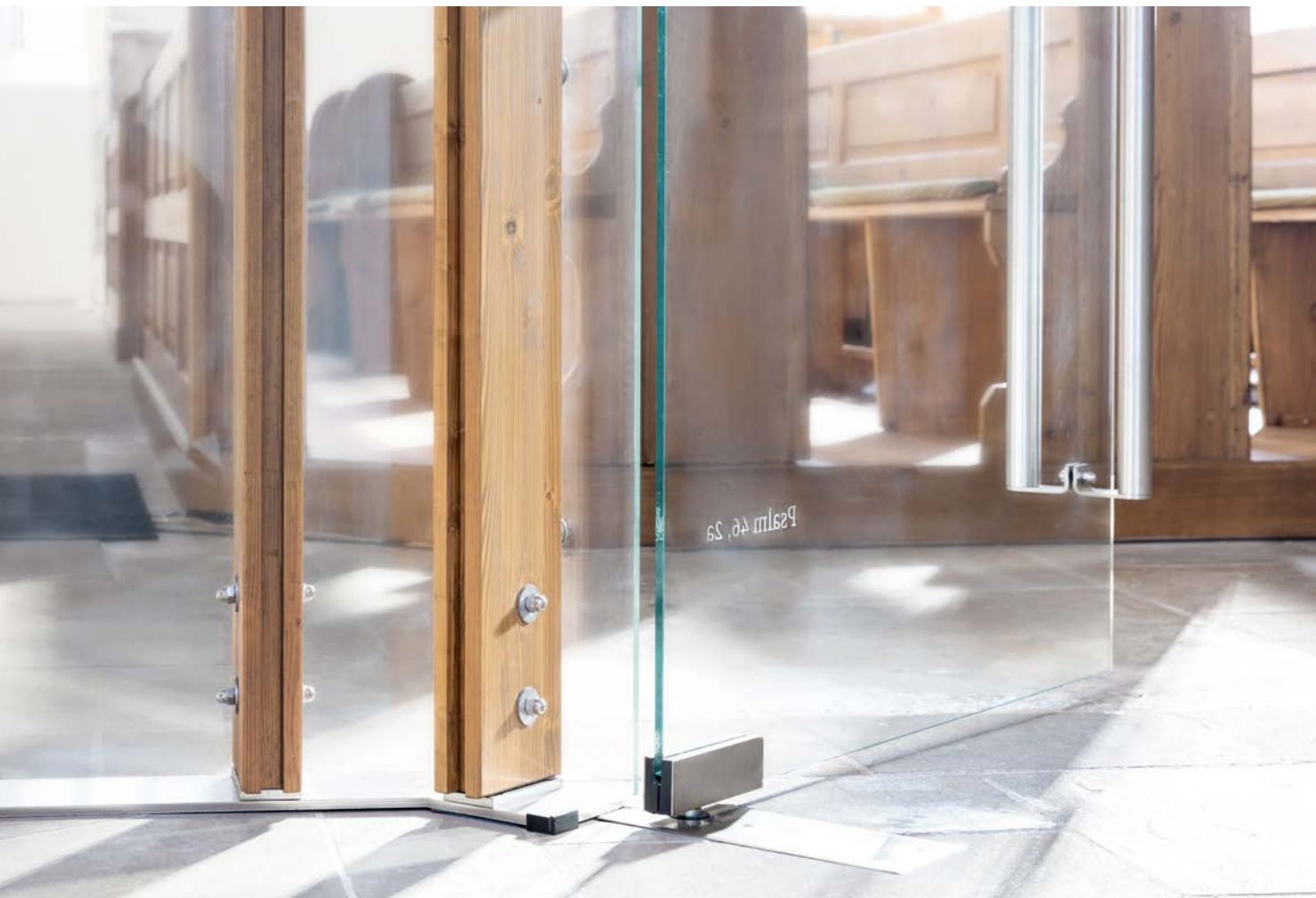
- Fire and smoke protection doors
- Up to 120 kg door leaf weight



For more information, see here:
www.dormakaba.xxx/xxx
www.dormakaba.xxx/xxx

Floor springs

BTS 84



The floor spring, specially for double-action doors. Thanks to its low depth of only 40 mm, flat floor recesses are sufficient for retrofitting.

Simply effective:

- Concealed installation
- Suitable for double-action doors
- For door leaf widths up to 1,100 mm
- Adjustable closing speed
- Option of constant hold-open at 90° door opening



For more information, see here:
www.dormakaba.xxx/xxx

System components and accessories

Smoke detector panels RMZ and RMZ XEA

The smoke detector panel RMZ enhances door closing systems with preventative fire protection. It supplies connected locking devices with 24 V direct current and switches them off in the event of an alarm or power failure (tripping).

Simply effective:

- Option to connect further smoke detectors (e.g. dormakaba RM-N)
- Dry changeover contact
- With integrated maintenance and operation indicator
- Suitable for lintel mounting
- RMZ is available in XEA and Contur design



For more information, see here:
www.dormakaba.xxx/xxx

EM Electromagnets for hold-open systems

Door-holding devices, which keep fire doors and smoke protection doors open. In the event of a fire, the release mechanism switches off the door-holding device after the fire has been detected by the fire detector.



Simply effective:

- For surface, flush and floor mounting
- Modular system for flexible application
- Concealed cable feed
- Optimal holding force with low power consumption
- Particularly suitable for wide and heavy doors



For more information, see here:
www.dormakaba.xxx/xxx

Door locks



The new generation of dormakaba SVP emergency escape locks is ideally suited for use in emergency and escape routes as well as in fire and smoke protection doors. With the help of the panic function and the self-locking mechanism, every door is securely protected.

Human lives are better protected:

- Panic function according to EN 179 and EN 1125
- Thanks to the panic function, the door can be opened at any time in escape direction by pressing the handle or the horizontal push bar

Property is better protected:

- Doors are automatically locked after closing
- Can be used in suitable entrance systems up to resistance class RC 2
- Increased tamper protection thanks to improved mechanical sequential control

The improved functions not only make the opening process easier, they also offer advantages during installation:

- Improved power traction for easy opening even under difficult conditions
- Secure locking and unlocking of motor locks thanks to integrated power reserve module (SVP 2000 DCW® F)
- Integrated LED for status display and error evaluation directly on the lock
- New operating modifications: DCW®, analog or CAN bus for motor lock variants

Emergency escape locks – an overview

Versions EN 179 + EN 1125

SVP/SVZ features	SVP 5xxx	SVP 4xxx	SVP 6xxx	SVZ 6xxx	SVP 2000 DCW®	SVP 2000 DCW® F	SVP 7000 Air
Mechanical lock	●	●					
Handle-operated lock			●	●			●
Motor lock					●	●	
Access control lock				●			
Panic function	●	●	●		●	●	● ³⁾
Mechanical self-locking	●	●	●	●	●	●	●
Mechanical sequential control	●	●	●	●	●	●	●
Two-point locking mechanism	●	●	●	●	●	●	
Anti-tamper circuit		●	●	●	●	●	
Bolt monitoring		●	●	●	●	●	
Notification of handle actuation/panic unlocking		●	●	●	●	●	
Door open monitoring via auxiliary latch		●	●	●	●	●	
Cylinder contact		●	●	●	●	●	
External handle electrically engageable/disengageable			●	●			●
Electromotive unlocking					●	●	
Adjustable unlocking time					●	●	
Permanent access from outside possible (permanently open) ¹⁾			●	●			●
Self-locking can be electrically switched off (permanent unlocking) ²⁾					●		
Automatic switch-off of permanently open/ permanent unlocking in the event of power failure			●	●	○ ²⁾		
Electric sequential control (tamper protection)					●	●	
Automatic reset of release after door has not been opened			●	●	●	●	
EN 179-approved	●	●	●		●	●	●
EN 1125-approved	●	●	●		●	●	●

● Standard ○ Optional

1) Permanently open function also permitted on fire and smoke protection doors, as guard locking is provided in the event of a fire.

2) Combined with the power reserve module.

3) Combined with SVP-S Air.

Door locks

Emergency escape locks

SVP 5000/SVP 4000/ SVP 6000/SVZ 6000



Additional features:

SVP 4000

- With status queries to query the door status

SVP 6000 – handle-operated

- Electrically engageable external handle for authorized access
- Universal connection to 12 V DC/24 V DC
- Versions: working/quiescent current

SVZ 6000 – access control lock

- Engageable inside and outside handle
- One-piece follower
- No panic function

Simply effective:

SVP 5000

- Panic function according to EN 179 and EN 1125
- Automatic self-locking, no manual locking required
- Universal auxiliary latch
- Up to resistance class RC 2 in suitable entrance systems



For more information, see here:
www.dormakaba.xxx/xxx

SVP 7000 Air



Battery-powered, emergency escape lock with split follower for use in escape routes and for fire and smoke protection doors in accordance with EN 179 and EN 1125. Thanks to the panic function, the door can be quickly opened with a handle, and the mechanical self-locking mechanism ensures that the door locks securely as soon as it is closed.

Simply effective:

- Automatic self-locking
- Retrofit lock thanks to cable-free installation
- Securely locked even in the event of battery failure
- Ideal solution for integration in existing access control systems using the SVP-S Air module, with dormakaba's MATRIX software, for example
- Pass through or lock the door by means of a hand-held transmitter for authorized access via the side opposite the panic lock
- Programming of up to 100 authorizations directly on the wireless lock
- Easy door opening according to DIN SPEC 1104



For more information, see here:
www.dormakaba.xxx/xxx

Door locks

Emergency escape locks

SVP 2000 DCW®/F (fire protection)

Full-leaf panic motor locks offer increased convenience thanks to motorized unlocking. Thanks to the panic function, the door can be quickly opened from the inside with a handle, and the mechanical self-locking mechanism ensures that the door locks securely as soon as it is closed.



Simply effective:

SVP 2000 DCW® motorized panic lock

- LED for visual support during operation, maintenance and commissioning (e.g. operating modes and incident reports)
- Automatic self-locking
- In DCW® bus, CAN bus and stand-alone modes
- LED status display shows error messages, such as incorrect operating voltage, bus connection interrupted etc.
- Can be used in analog mode without control unit (open and close only)
- Status messages for querying the door status
- Convenient remote unlocking in combination with access control and escape route safety systems
- DIN universal auxiliary latch
- Certified according to EN 179 and EN 1125

Additional features:

SVP 2000 DCW® F – for fire and smoke protection doors

- With integrated power reserve module



For more information, see here:
www.dormakaba.xxx/xxx



Door locks

Emergency escape locks

M-SVP 2200 DCW[®]/5000/3000

The M-SVP multi-point emergency escape-locks with panic function offer more security and convenience for all common door constructions in the private sphere as well as for project applications. The panic unlocking mechanism allows the door to be opened from the inside at any time by simply pressing the door handle in the event of danger. The door can also always be unlocked with a key from the outside. M-SVP multipoint locks are approved for use in doors on escape routes as well as in fire and smoke protection doors.



For more information, see here:
www.dormakaba.xxx/xxx
www.dormakaba.xxx/xxx

Simply effective:

M-SVP 2000/M-SVP 2200 DCW®: emergency escape multipoint motor lock

- Extremely convenient thanks to motorized locking and unlocking, in particular in combination with access control systems
- Door is securely attached by two steel swing bolts
- In suitable entrance systems, very high levels of break-in protection up to resistance class RC 3 can be achieved
- In combination with automatic operators, doors can be made barrier-free as required
- Day-latch function and permanent unlocking for doors with high footfall
- With detectors to monitor the door status
- All control components can be elegantly integrated into the door frame profile

M-SVP 2200 DCW® also offers:

- Integrated dormakaba DCW® system bus technology
- Two additional bolts to optimize the lock

M-SVP 5000: emergency escape multipoint lock

- Purely mechanical lock
- Easy to retrofit, no wiring required
- The self-locking mechanism is activated automatically each time the door is closed



M-SVP 2000 and M-SVP 2200 DCW® with swing bolts



Latch bolts on M-SVP 3000 and M-SVP 5000

M-SVP 3000: emergency escape electromechanical multipoint lock

- Convenient thanks to motorized unlocking, in particular in combination with access control systems
- In combination with automatic operators, doors can be made barrier-free as required
- Permanent unlocking for doors with high levels of footfall
- Mechanical self-locking

Door locks

Emergency escape locks

M-SVP 3500/5500

Increased security for double-leaf escape door systems: In combination with a panic keep, a switch lock and the self-locking shoot bolt, the dormakaba M-SVP 3500 and M-SVP 5500 door locks also offer the usual advantages of automatic multiple locking mechanisms with panic function in double-leaf building doors. These are suitable for use in two-leaf emergency exit or panic doors as well as fire and smoke protection doors.

Simply effective:

M-SVP 3500

- Electromechanical multiple locking mechanism with panic function for double-leaf doors
- Mechanical self-locking each time the door closes
- Convenient thanks to the motorized unlocking of the active leaf in combination with access control systems
- Permanent unlocking for doors with high levels of footfall
- Various types of feedback, including: handle pressed, locked/unlocked etc.

M-SVP 5500

- Mechanical multiple locking mechanism with panic function for double-leaf door systems
- Automatic self-locking each time the door closes
- No wiring required



M-SVP 3500 with keep for double-leaf doors

Latch bolts on M-SVP 3500 and M-SVP 5500



For more information, see here:
www.dormakaba.xxx/xxx



M-SVP 3500 in combination with panic fitting PHA 2500 and SafeRoute escape route safety device

Emergency exit systems



Save lives – protect valuables

Doors in emergency and escape routes present an enormous safety challenge because they have to meet conflicting requirements: protecting human lives on the one hand, securing property on the other. Building regulations for escape routes require that the door can be easily opened from the inside without external aids. At the same time, insurers, police and facility operators demand the safest possible lock to prevent misuse and break-in. Our escape route safety systems monitor, control and release the door in the event of danger.

Emergency exit systems

SafeRoute

SafeRoute components

The basic components of a SafeRoute system are an electric door lock (STV), a SafeRoute control unit (SCU) with a SafeRoute license card (SLI) and an emergency button with a connected key switch (ST). A SafeRoute system can be

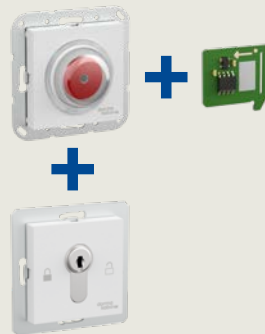
extended and adapted to individual tasks using additional components. This modular system enables simple, uniform and uncomplicated planning and offers planning security and flexibility.

Control, operate, release

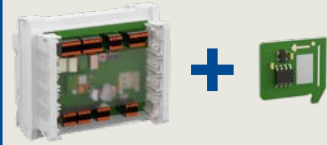
STL-G with SCU-TL as master
"All-in-one" terminal
(with or without power supply unit)



SCU-UP as master
Individual components



SCU-DR as master
DIN rail mounting and individual components



STL-G (slave)



SCU-UP (slave)



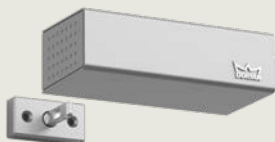
SafeRoute Control SCU as a uniform hardware platform

SafeRoute enables a completely new form of planning security. Only the desired control plan (control unit as flush-mounted component, in the surface-mounted terminal or as DIN rail-mounted device) is determined at the beginning of the planning. Any further definition of the functional scope actually required later is independent of the hardware, since SafeRoute has an innovative licensing model. The license is available on a plug-in license card for one time purchase (no subscription). Subsequent extensions can be made by simply exchanging the license card instead of replacing the hardware.

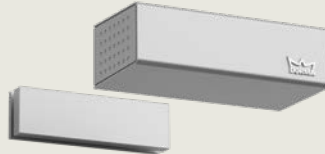


Locking and unlocking

STV 1xx
Electromechanical door lock



STV 2xx
Electromagnetic door lock



STV 5xx
Electromechanical door lock for concealed frame installation



SafeRoute STV door locks in different versions

dormakaba STV door locks unlock doors on secured escape routes when released in the event of danger or authorized access. The door locks are available for almost all requirements in an electro-mechanical version, as a holding magnet or for concealed frame installation. All versions are connected only via the 4-wire DCW® bus. The additional wiring of an emergency stop circuit is not required.

Other functions

The functional range of a door can be easily extended with additional components. For example, motor locks hinged door operators can be integrated or systems networked and connected to higher-level building management systems.



For the complete list of available components, see here:
www.dormakaba.xxx/xxx

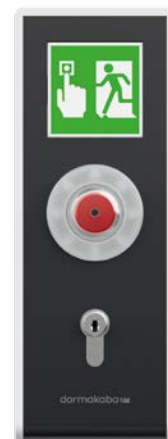
Emergency exit systems

SafeRoute: control, operate, release

STL-G surface-mounted terminal

The STL-G door terminal consists of the components SCU-TL with emergency button and key switch in a surface-mounted housing. In conjunction with an electrical lock, the STL-G door terminal meets the requirements of EN 13637 and EltVTR.

With a license card, the STL-G becomes a control unit and monitoring center (master). Without a license card, the STL-G door terminal can be used as an additional door terminal for an escape route door in a network as a "slave."



Simply effective:

- Combination of all components needed for control and operation in a robust housing with aluminum alloy frame
- Available in the attractive XEA design in twelve color combinations and special colors as standard
- Easy mounting thanks to hinged housing and unchanged fixing points compared with the predecessor product
- System-wide standardized wiring with 4-wire DCW® bus technology
- Variants with and without integrated power supply unit available



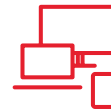
For more information, see here:
www.dormakaba.xxx/xxx

SCU-UP flush-mounted control unit/ emergency button

Flush-mounted unit with integrated emergency button as System 55 application for use as control unit (master) or emergency button (slave). In its delivery state, the SCU-UP functions as an emergency button with an inserted license card such as the SCU-UP for the control unit.

Simply effective:

- Integrated emergency button
- The range of functions of the control unit is selected by a new license model
- Integrated illuminated ring for visual support during commissioning, operation and service
- Uncomplicated alarm reset by non-locking emergency button
- Acoustic and visual alarm
- System-wide standardized wiring with 4-wire DCW® bus technology
- Common flush-mounted combinations are available as delivery sets



For more information, see here:
www.dormakaba.xxx/xxx

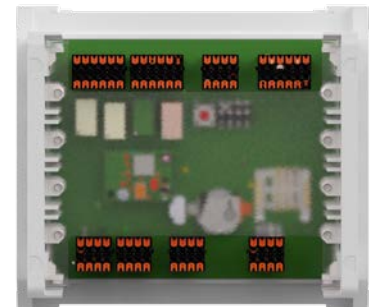
SCU-DR control unit for DIN rail mounting

The SCU-DR is a control unit for mounting on top-hat rail TS35 according to EN 50022, with 4-wire DCW® bus technology. Can be used in control cabinets or in power supply housings dormakaba NT-G, NT-G1 and NT-G2, for example. Integrated I/O module with four inputs and outputs.

To operate, a license card SLI (from Basic) and at least one emergency button are required, e.g. the flush-mounted unit SCU-UP or the surface-mounted terminal STL-G.

Simply effective:

- The range of functions of the control unit is selected by a new license model
- Four inputs and four outputs each for integration of external sensors/actuators (integrated I/O module)
- Functions can be parameterized with TMS Soft (depending on selected license)
- Mounting on top-hat rail TS35 according to EN 50022
- System-wide standardized wiring with 4-wire DCW® bus technology



For more information, see here:
www.dormakaba.xxx/xxx

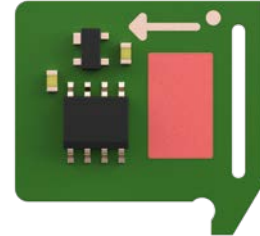
Emergency exit systems

SafeRoute: control, operate, release

SafeRoute license cards SLI

The functional scope of a SafeRoute escape route safety system is defined by pluggable license cards which remain in the control unit SCU during operation. There are currently three types of license cards: Mini, Basic and Standard.

Applications offer additional flexibility: They can be used to reload special functions, e.g. multi-door control for the use of a single SCU control unit for up to four doors, interlock control, extended logic functions and the possibility of a delayed release of up to 15 seconds in accordance with EN 13637.



Simply effective:

- Simple: The license card is permanently functional, without any license or subscription management
- Scalable: You only have to purchase the functions you actually need
- Uniform: Irrespective of the function, the system components remain largely identical
- Planning-proof: The system structure can be determined without the final required function being known
- Flexible: The range of functions can be changed and extended at any time



For more information, see here:
www.dormakaba.xxx/xxx

SafeRoute: locking and unlocking

STV 100 door locks



Electromechanical door lock (closed-circuit current principle) for attachment to the frame lintel. Connection to the SCU via 4-wire DCW® bus only. The STV 1xx door lock opens with no jamming and no delay. The maximum locking force complies with EltVTR and EN 13637 grade 3.

Simply effective:

- Opens with no jamming and no delay
- Tamper-proof thanks to tamper contact
- Painted robust metal housing
- Integrated contacts for monitoring active/inactive status
- Approved according to EltVTR and certified according to EN 13637
- Suitable for retrofitting (depending on the door construction used)



For more information, see here:
www.dormakaba.xxx/xxx

Emergency exit systems

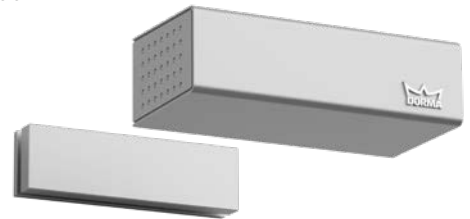
SafeRoute: locking and unlocking

STV 200 door locks

Electromagnetic door lock (closed-circuit current principle) for attachment to the frame lintel. Connection to the SCU via 4-wire DCW® bus only. The STV 2xx door lock opens with no jamming and no delay. The maximum locking force complies with EltVTR and EN 13637 grade 3.

Simply effective:

- Opens with no jamming and no delay
- Tamper-proof thanks to tamper contact
- Painted robust metal housing
- Approved according to EltVTR and certified according to EN 13637
- Suitable for retrofitting (depending on door construction)



For more information, see here:
www.dormakaba.xxx/xxx

STV 500 door locks

The electromechanical door lock for concealed frame installation for doors in escape routes not only ensures a visually appealing appearance for the door, the STV 500 also makes the door vandal-resistant.

Simply effective:

- Unlocks whatever the load and with no jamming
- Adjustable latch
- Protected against vandalism by concealed door frame installation
- With DCW® bus technology
- Integrated monitoring contacts
- Approved according to EltVTR and compliant with EN 13637



For more information, see here:
www.dormakaba.xxx/xxx

STV-A universal adapter

The adapter enables the connection of analog locks without DCW® bus interface in SafeRoute (dormakaba TV 100, TV 200, TV 500, TV 550). The integration of suitable third-party products according to EltVTR/EN 13637 is also possible (please respect relevant approvals and certificates).

Simply effective:

- Due to the small size especially suitable for installation in profile frames



For more information, see here:
www.dormakaba.xxx/xxx



Emergency exit systems

SafeRoute: networking and remote control

SLON-DR network adapter

Enables the connection of SafeRoute control units SCU to LON networks as well as visualization and parameterization via TMS Soft. The connection is to the RS232 interface of the SCU control unit (master). The license card SLI Basic is a minimum requirement.

Simply effective:

- Up to twelve doors can be networked via a single SLON module possible (depending on structural conditions and system configuration)



For more information, see here:
www.dormakaba.xxx/xxx

SLAN-DR network adapter

Enables the connection of the SafeRoute control unit SCU to the LAN-TCP/IP network as well as visualization and parametrization via TMS SoftR. The connection is to the RS232 interface of the SCU control unit (master). The license card SLI Basic is a minimum requirement.

Simply effective:

- Up to four self-sufficient doors can be networked via a single SLAN module (depending on structural conditions and system configuration)
- SLAN module connected via RS232 is only needed at the control unit (master)
- Use of existing infrastructure
- Common network administration



For more information, see here:
www.dormakaba.xxx/xxx



Emergency exit systems

TMS

**Note:**

For refurbishment projects, we recommend our new generation of SafeRoute escape route safety systems. SafeRoute complies not only with the EltVTR but also with EN 13637 and therefore offers you a particularly high degree of planning security.

TMS: control, operate, release

TMS Basic Set



TMS Basic Set with DCW® bus technology is the solution for securing individual escape route doors and comes with a robust aluminum alloy housing that is particularly suitable for the initial fitting or retrofitting of individual doors. It enables doors to be immediately opened in an emergency and provides effective protection against door misuse in normal situations.

Simply effective:

- Escape door terminal including control unit and power supply unit
- Pre-assembled and pre-configured
- Robust aluminum alloy housing
- Short-term, long-term and permanent unlocking
- Flexible expansion options thanks to DCW® bus technology
- User-defined parametrization with TMS Soft



For more information, see here:
www.dormakaba.xxx/xxx

TL-G AP

Tamper-protected door terminal housing in a powder-coated aluminum alloy in protection class IP 30 for accommodating the TL-S TMS control and connection board. Easy mounting of upper and lower parts of terminal thanks to mounting cylinder accessible from the front and hinged upper part.

Simply effective:

- Robust aluminum alloy housing
- Protected against vandalism
- Distinctive visual and audible alarm signaling
- Wide range of accessories
- Supplied with pre-assembled power supply unit if required



For more information, see here:
www.dormakaba.xxx/xxx

Emergency exit systems

TMS: control, operate, release

TL-S TMS 2

With the dormakaba TL-S TMS control and connection boards TL-S TMS 2, TL-S DCW® and TL-S TMS Comfort for escape route safety and door management, extensive door functions can be implemented and also managed networked from a central location via PC.

Simply effective:

- Control of all escape route functions/external components
- For surface-mounted and flush-mounted systems
- DCW® bus with component self-detection
- User-defined parametrization with TMS Soft
- Programmable inputs and outputs
- Networking option



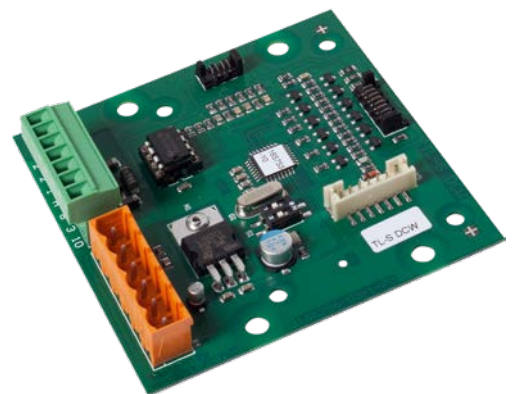
For more information, see here:
www.dormakaba.xxx/xxx

TL-S DCW

Terminal connection board for installation in TL-G 3xx/5xx.

Simply effective:

- Allows separate door terminals to be connected to remote TL-S TMS 2 or RZ TMS 2 control units via dormakaba DCW® system bus, e.g. for bidirectional escape routes
- Up to four TL-S DCW® can be connected to a TL-S TMS 2 or RZ TMS 2
- Adjustable parameters and functions of the TL-S TMS 2 or RZ TMS 2, e.g. alarm and signaling volume or function of the integrated key switch, are automatically taken over
- Connected loads: 24 V DC +/-10%, via DCW® system bus
- Maximum current consumption: approx. 65 mA, approx. 85 mA (in the event of an alarm)



For more information, see here:
www.dormakaba.xxx/xxx

TMS: locking and unlocking

TV 100 DCW®/TV 200 DCW®

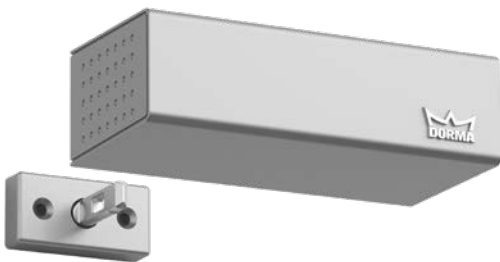
Door locks (closed-circuit current principle) for attachment to the lintel of the frame. Connection to the SCU via 4-wire DCW® bus only. The door locks open with no jamming and no delay. The maximum locking force complies with EltVTR and EN 13637 grade 3.

Simply effective:

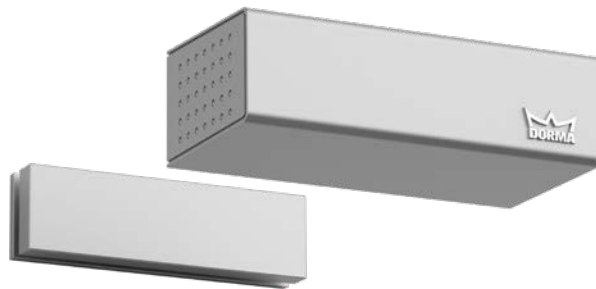
- Electromechanical locking (TV 100 DCW®), electromagnetic locking (TV 200 DCW®)
- Unlocks whatever the load and with no jamming
- Robust metal housing in the Contur design
- Different color variants
- With DCW® bus technology
- Integrated monitoring contacts



For more information, see here:
www.dormakaba.xxx/xxx



TV 100 DCW



TV 200 DCW



Emergency exit systems

TMS: locking and unlocking

TV 500 DCW®



Electromechanical door lock for concealed frame installation for doors on escape routes.

Simply effective:

- Electromechanical locking
- Protected against vandalism by concealed door frame installation
- Adjustable latch
- Unlocks regardless of load and with no jamming
- With DCW® bus technology
- Integrated monitoring contacts



For more information, see here:
www.dormakaba.xxx/xxx

TL-UP design

The door terminal for flush-mounting enables doors to be activated in the event of danger and allows authorized persons to pass through the escape door or deactivate alarms after activation.

Simply effective:

- Attractive design
- Sets for flush mounting
- Comprising emergency button, key switch and double frame
- Connection to escape route control panels via DCW® system bus
- User-defined parametrization with TMS Soft



For more information, see here:
www.dormakaba.xxx/xxx



RZ TMS 2



The escape route control center acts as the central control unit for the components used in the escape route safety system and door management. As a remote control unit, it offers maximum flexibility and extensive upgrade options for all door-related functionalities.

Simply effective:

- Remote TMS escape door control
- Includes control unit, DCW® bus distributor and power supply unit
- Can be upgraded with additional components if desired
- Control of all escape route functions/external components
- DCW® bus with component self-detection
- User-defined parametrization with TMS Soft
- Available in various versions (e.g. with and without power supply unit or with VdS approval for integration in intrusion alarm systems up to category C)

TMS panel systems



Panel systems for controlling and monitoring escape route doors and doors in safety-relevant areas. This allows doors or door groups to be operated remotely, which is particularly suitable for interlock applications or as an access solution for security areas.

Simply effective:

- Central control and monitoring of doors
- Central activation from permanently manned control room
- Targeted opening of individual doors
- Connection to LAN-/LON networks
- Definition of door groups
- No limit on the number of doors



For more information, see here:
www.dormakaba.xxx/xxx



For more information, see here:
www.dormakaba.xxx/xxx

Emergency exit systems

TMS: networking and remote control



TMS LAN/LON networking



Central management of TMS via LON or LAN.

Advantages of LON:

- Setup of parallel panels
- Setup of complex systems with multi-door interlocks
- Free choice of network topology
- Unlimited network coverage and number of nodes

Advantages of LAN:

- Access to existing network hardware
- Parallel clients and panels
- Free choice of network topology
- Uncomplicated upgrades with further TMS control panels

TMS Soft



TMS Soft PC software for the configuration, control and visualization of dormakaba entrance systems (SafeRoute, TMS, SVP-S, ED, ES).

Simply effective:

- Escape door control, visualization and configuration
- Integrated access control
- Integration of locks, operators etc.
- Special applications, e.g. interlocks
- For the management of LAN/LON networks
- Connection to building management



For more information, see here:
www.dormakaba.xxx/xxx



For more information, see here:
www.dormakaba.xxx/xxx

TMS Comfort/TMS Comfort Offline

TMS Comfort is a multifunctional System 55 flush-mounted escape route safety system for installation in switch boxes. It is particularly suitable for equipping individual doors with low or medium footfall.

Simply effective:

- Flush-mounted escape door terminal
- Control unit and emergency button in a single component
- Variants for two or three flush-mounted boxes
- Short-term, long-term and permanent unlocking
- Flexible upgrades thanks to DCW® bus technology
- User-defined parametrization with TMS Soft



For more information, see here:
www.dormakaba.xxx/xxx

SafeRoute and TMS system components

The system components for dormakaba SafeRoute and TMS escape route safety systems offer various possibilities for individual adaptation of the system according to requirements.

Simply effective:

- Modular system with system components from a single source:
 - Key switches in different versions
 - Signal transmitters, e.g. flashing lights and sirens
 - DCW® infrastructure components, e.g. bus distributor and I/O modules
 - Power supply units and batteries for emergency power supply
 - Cover frame for various switch programs
 - Various power supply housings
 - Additional modules for special functions, e.g. emergency opening delay



For more information, see here:
www.dormakaba.xxx/xxx
www.dormakaba.xxx/xxx

Electrified door hardware

Electronic door openers

Basic series

The electronic door openers allow easy, controlled access and safe locking of general doors. Installation in any position and extensive adjustability make installation and retrofitting much easier.

Smoke series

Thanks to its position-independent smoke protection approval, the Smoke electric door opener can be used in many ways to unlock smoke protection doors. "Smoke" smoke protection door openers are available for all common operating voltages.



Basic (XS, Small, Safe, Radius, Basic 448 Lucky)



Simply effective:

- DIN-L-/DIN-R-neutral installation
- Available in 6–12 V, 12 V and 24 V variants
- Adjustable latch to compensate for mounting tolerances
- Variants with unlocking, locking, monitoring contact
- Integrated overvoltage protection
- Available in different sizes

Smoke/ Smoke 448 Lucky



Simply effective:

- Position-independent smoke protection approval
- DIN-L-/DIN-R-neutral installation
- Available in 6–12 V, 12 V and 24 V variants
- Adjustable latch to compensate for mounting tolerances
- Version with feedback contact
- Integrated overvoltage protection



For more information, see here:
www.dormakaba.xxx/xxx



For more information, see here:
www.dormakaba.xxx/xxx

DES



The DES security door opener offers a universal solution for doors with high security requirements. Thanks to the high holding force, extensive monitoring functions and appropriate accessories, it is a convenient option for various structural conditions.

Simply effective:

- High holding force of approx. 13,000 N
- Quiescent current or operating current can be selected
- Version with monitoring function for latch and door position as well as tamper contact
- Operating voltage 12/24 V DC
- Stainless steel latch
- DIN-L-/DIN-R mounting



For more information, see here:
www.dormakaba.xxx/xxx

Fire 447/Fire 448 Lucky

Electric fire door opener with position-independent fire protection approval.

Simply effective:

- Independent fire protection approval
- DIN-L-/DIN-R-neutral installation
- Available in variants 6–12 V, 12 V and 24 V
- Adjustable latch to compensate for mounting tolerances
- Version with feedback contact
- Integrated overvoltage protection



For more information, see here:
www.dormakaba.xxx/xxx

Panic hardware

PHA 2000/PHB 3000

Panic fittings for doors on escape routes where safety, reliability and aesthetics are indispensable requirements. The wide safety latch bolt engages in a latch holder that is normally mounted on the frame. This ensures that the door is securely locked. The PHA and PHB products meet all the hardware demands placed on public facilities such as hospitals, universities and schools, concert halls, shopping malls, hotels and administrative buildings.



Simply effective:

- Suitable for narrow profile system doors as well as full leaf doors
- Comprehensive range of high-quality panic hardware fittings
- For horizontal and vertical panic locks
- No visible attachments
- Quick and easy mounting



For more information, see here:
www.dormakaba.xxx/xxx

Exit pads

Exit pads are mounted on the door leaf and secured with a latch against a locking plate on the frame. Similarly to the panic fittings PHA 2000 and PHB 3000, the exit pads are also mounted products without lock connection according to EN 179.

Simply effective:

- For horizontal and vertical panic locks
- Various locking options
- No visible attachments
- Quick and easy mounting



For more information, see here:
www.dormakaba.xxx/xxx





Entrance Systems

Entrance systems fulfil various functions in the building: They enable convenient and secure access, regulate the flow of people and access to sensitive areas. In addition, they can help to save energy in the building because the doors close reliably. Automatic door systems from dormakaba are characterized by their design, variety, safety and convenience.



Entrance Systems

This is how doors should open, elegantly and intelligently.

Entrance systems can do both – ensure access as needed and separate off security-relevant areas such as those in hotels and airports. For all functions, the automatic door must always move with high precision. New control systems facilitate and secure access, whether to a city council building, hospital or shopping mall. Visitors feel a real sense of freedom – the freedom of movement. Door opening is fast, gentle and barrier-free. Doors that close properly also improve a building's energy footprint.



Hinged door operators

From electromechanical support for manual opening to remote-controlled automatic control.



Automatic sliding doors

The right solution for almost every entrance situation. Transparency and efficient person flow.



Sliding door operators

For all standard and escape route applications, space-saving, quiet, durable, easy to maintain.



Revolving doors

High passage capacity, avoidance of drafts. Accessibility as part of the systems.



System components and accessories for Entrance Systems

Activator with automatic feedback, safety sensors for the door leaf opening.



Security revolving doors, security turnstiles und security interlocks

Suitable for the security level. Separation sensors, access control, bullet- and burglar-resistant.



Tripod turnstiles and turnstiles

Access control, robust and weather-proof for outdoors, elegant for indoors, with digital integration.



Sensor barriers and sensor gates

Versatile modular design variants for contactless access control in indoor areas.



Swing doors

In addition to our waist-high access units, for goods transport or as a barrier-free access option.



Pedestrian guiding bars and reader posts

Pedestrian guidance, access control and badge management for our waist-high access units.

Swing door operators

Swing door operators – an overview



	ED 100	ED 250	PORTEO
Dimensions (H x W x D) (mm)	685 x 70 x 130	685 x 70 x 130	530 x 60 x 80
Dimensions with integrated smoke detector panel (mm)	735 x 70 x 130	735 x 70 x 130	
Use in fire protection	●	●	
Number of door leaves	1 and 2	1 and 2	1
Max. power consumption (watts)	120	240	
Door closer power EN 1154	EN 2–4 infinitely adjustable	EN 4–7 infinitely adjustable	
Max. door leaf weight up to 300 mm frame reveal depth (kg)	160 depending on the door width	300 depending on the door width	100 at max. 1100 mm door leaf width
Max. door leaf weight 301 to 500 mm frame reveal depth (kg)		160	
Door leaf width (mm)	700–1100	700–1600	700–1100
Opening speed 0–90° (seconds)	4 ¹⁾ –12	3 ¹⁾ –12	5–10
Closing speed 90–0° (seconds)	5 ¹⁾ –21	4 ¹⁾ –21	5–10
Axle extension (mm)	20/30/60	20/30/60/90	
Frame reveal depth slide rail (mm)	+/- 30	+/- 30	
Frame reveal depth slide rail CPD (mm)	30–60	30–60	
Frame reveal depth standard arm assembly (mm)	0–300	0–500	
Frame reveal depth standard arm assembly with fire protection (mm)	0–300	0–350	

● Standard

1) Automatically limited depending on the door leaf weight in accordance with EN 16005 or DIN 18650, BS 7036-4 and ANSI 156.19 in low-energy mode. Max. speeds can be reached only in full-energy mode, with a low door leaf weight and a taught-in opening angle of min. 95°.

ED 100/250



Swing door operators for single- and double-leaf doors in door leaf widths of up to 1,600 mm (fire protection: 1,400 mm) and max. 400 kg door weight.

The state-of-the-art swing door operators ED 100/ED 250 are easy to handle but still extremely flexible. The operator has small dimensions and can easily be adapted to individual requirements thanks to its modular design. Despite its strength, the operator is so quiet in operation that it is hardly noticed. The modern control system is designed to adapt to users' needs and to compensate for changing conditions in the environment, thus achieving a very high level of system availability.

Simply effective:

- Active wind load control in automatic mode
- Temperature management program – reliable operation with long service life
- Opening support Power Assist – barrier-free access according to DIN 18040, DIN SPEC 1104
- Automatic door opening with ED 250 for quick and easy transport of hospital beds
- With Environmental Product Declaration (EPD)
- Space-saving with internal smoke detector panel



For more information, see here:
www.dormakaba.xxx/xxx

Swing door operators

ED ESR 1/2



Hinged door operator for double-leaf doors, fully automated active leaf with all ED 100/250 functions, inactive leaf without automatic function.

Simply effective:

- Minimal dimensions of 7 cm in height
- Fixed leaf can be opened by hand, supported by the Power Assist function.
- The fixed leaf can be kept open if required
- The system can also be used as a hold-open system
- Use up to EN 6 (without fire protection requirement up to 3,200 mm)
- Approved for fire and smoke protection doors



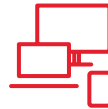
For more information, see here:
www.dormakaba.xxx/xxx

PORTEO

Thanks to its small dimensions, the particularly quiet PORTEO silent door operator is particularly suitable for use on doors without special requirements. In Power Assist mode, the PORTEO can significantly reduce the force required to open the door, making it easy to open the door manually.

Simply effective:

- Easy to retrofit
- One version for four types of mounting: Hinge and opposite hinge side in head or door leaf mounting
- Small dimensions:
60 mm x 530 mm x 80 mm (H x W x D)
- Virtually noiseless driving characteristics
- Easy mounting thanks to Plug & Go function
- GGT-tested



For more information, see here:
www.dormakaba.xxx/xxx



Automatic sliding doors

ST FLEX



The ST FLEX automatic sliding door with the FLEX profile system creates a transparent appearance with its narrow visible widths. Convenience and accessibility create an inviting atmosphere. Together with doors from the ST FLEX family (ST FLEX Green and ST FLEX SECURE), this results in a harmonious overall appearance.

Simply effective:

- Slim profile cross-sections
- Rubber safety secondary closing edge
- Suitable for ISO glass with a thickness of 22 mm and toughened safety glass with a thickness of 8 mm/10 mm
- Surface and underfloor guides possible
- Also available as telescopic sliding door
- Adapts flexibly to the property's requirements



For more information, see here:
www.dormakaba.xxx/xxx

ST FLEX Green



The automatic energy-saving sliding door ST FLEX Green is an energy-saving sliding door with an Environmental Product Declaration (EPD). It meets the guideline values of the Energy Saving Ordinance (EnEV) 2016 with very slim profiles and improved thermal separation.

Simply effective:

- Complies with the Energy Saving Ordinance (EnEV) 2016
- UD values 1.4 up to max. 1.8 W/m²K
- Minimized visible widths of the profiles
- Certified thermal insulation values according to DIN EN ISO 10077
- Sustainable, energy-saving solution
- With Environmental Product Declaration (EPD)



For more information, see here:
www.dormakaba.xxx/xxx

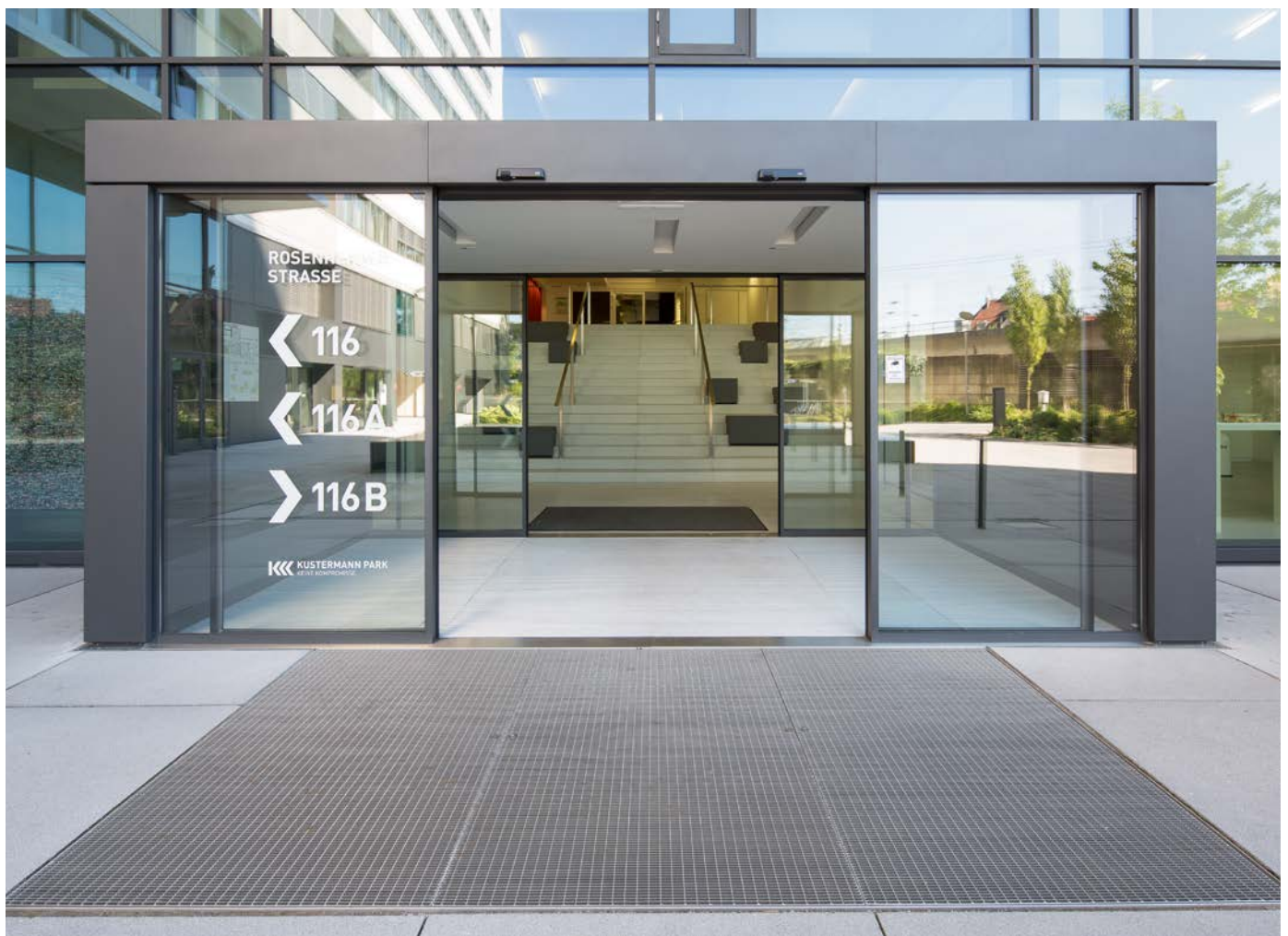
Automatic sliding doors

ST FLEX SECURE

The core features of the FLEX SECURE sliding door are protection against burglary and vandalism combined with a discreet appearance. The break-in protection classes WK2/RC2 are documented by a test certificate according to EN 1627 et seq. In combination with door types ST FLEX or ST FLEX Green, transparent, barrier-free entrance solutions are easy to implement.

Simply effective:

- Certified break-in protection classes WK2/RC2
- Optically appealing, slim profile views
- Massive 4-point lock at the main closing edge
- Continuous lever-out protection for door leaves
- Underfloor guide for stable floor connection
- Tested versions with or without side panel



For more information, see here:
www.dormakaba.xxx/xxx

TST FLEX

Telescopic sliding doors in the FLEX profile system offer large passage widths with highly transparent door elements. Together with other doors from the FLEX family, even particularly ambitious project solutions can be realized.

Simply effective:

- Telescopic mechanism creates more passage for the same system width
- Slim profile system FLEX for transparent entrances
- Secondary closing edge with safety rubber profile
- Suitable for ISO glass with a thickness of 22 mm
- Same profile views as for ST FLEX sliding door



For more information, see here:
www.dormakaba.xxx/xxx

Automatic sliding doors

ST PURE



Automatic sliding door with all-glass door leaves (no frame).

Simply effective:

- All-glass door leaves without door profiles
- Specially for interior applications
- Door leaf holder with discreet dimensions
- Door designs with and without side panel/overpanel are possible



For more information, see here:
www.dormakaba.xxx/xxx

ST MANET

Automatic sliding door with all-glass door leaves and stainless steel holder (no frame).

Simply effective:

- High-quality stainless steel point holders for the door leaves
- Door leaves without door profiles for max. transparency
- For high-quality interior fittings
- Doors with and without side panel/overpanel are possible



For more information, see here:
www.dormakaba.xxx/xxx

SST FLEX



Swing-out door leaves and side panels can open up very large passageways in the event of danger. In automatic mode, the breakout sliding door functions like a standard sliding door.

Simply effective:

- Slim profile in the FLEX system
- Automatic mode corresponds to that of conventional sliding doors.
- Door leaves and side panels can be swung open manually in case of emergency
- Escape route width corresponds to almost all of the entire door width
- Enables the transport of bulky objects



For more information, see here:
www.dormakaba.xxx/xxx

Automatic sliding doors

FFT FLEX Green



The FFT FLEX Green folding door is particularly suitable for laterally limited installation space. It enables opening widths of up to 2.4 m and passage heights of up to 2.5 m. Exceptionally good thermal insulation, combined with very quiet and dynamic running characteristics, characterize this door.

Simply effective:

- Large opening widths
- Particularly narrow profiles
- High energy efficiency
- UD value calculation
- Quiet and dynamic running behavior
- For emergency and escape routes
- With Environmental Product Declaration (EPD)



For more information, see here:
www.dormakaba.xxx/xxx

Sliding door operators

ES 200



Modular sliding door operator with various operator heights. Additional modules and options help create customized solutions for automatic sliding doors. The test according to DIN 18650/EN 16005 guarantees safety at a high level.

Simply effective:

- Possible operator heights of 100 mm, 150 mm, 200 mm
- Escape route operator ES 200 2D
- Parameterization directly on the control unit or via hand-held terminal
- Special function modules for special requirements
- Uniform basic mechanics for all types
- Noise-insulated, replaceable running profile
- Also available as an operator for telescopic sliding doors for standard and escape route applications



For more information, see here:
www.dormakaba.xxx/xxx
www.dormakaba.xxx/xxx

Sliding door operators

ES 410/420



Sliding door operator for hospital/clinics or for in-wall mounting, single-leaf (ES 410) and double-leaf (ES 420).

Simply effective:

- Operator unit mounted on the side, either right or left
- Tested to DIN 18650/EN 16005
- Interlock operation with up to three operators possible
- Parametrization via PC or organizer
- Push & Go mode



For more information, see here:
www.dormakaba.xxx/xxx

www.dormakaba.xxx/xxx

CS 80 MAGNEO

Sliding door operator for single- and double-leaf interior doors.

Simply effective:

- Dimensions: 62/75 mm high, 60 mm deep
- Max. leaf weight 80 kg
- Easy mounting and commissioning
- Tested to DIN 18650/EN 16005
- Convenient, barrier-free access
- Adjustable speeds and keep-open times

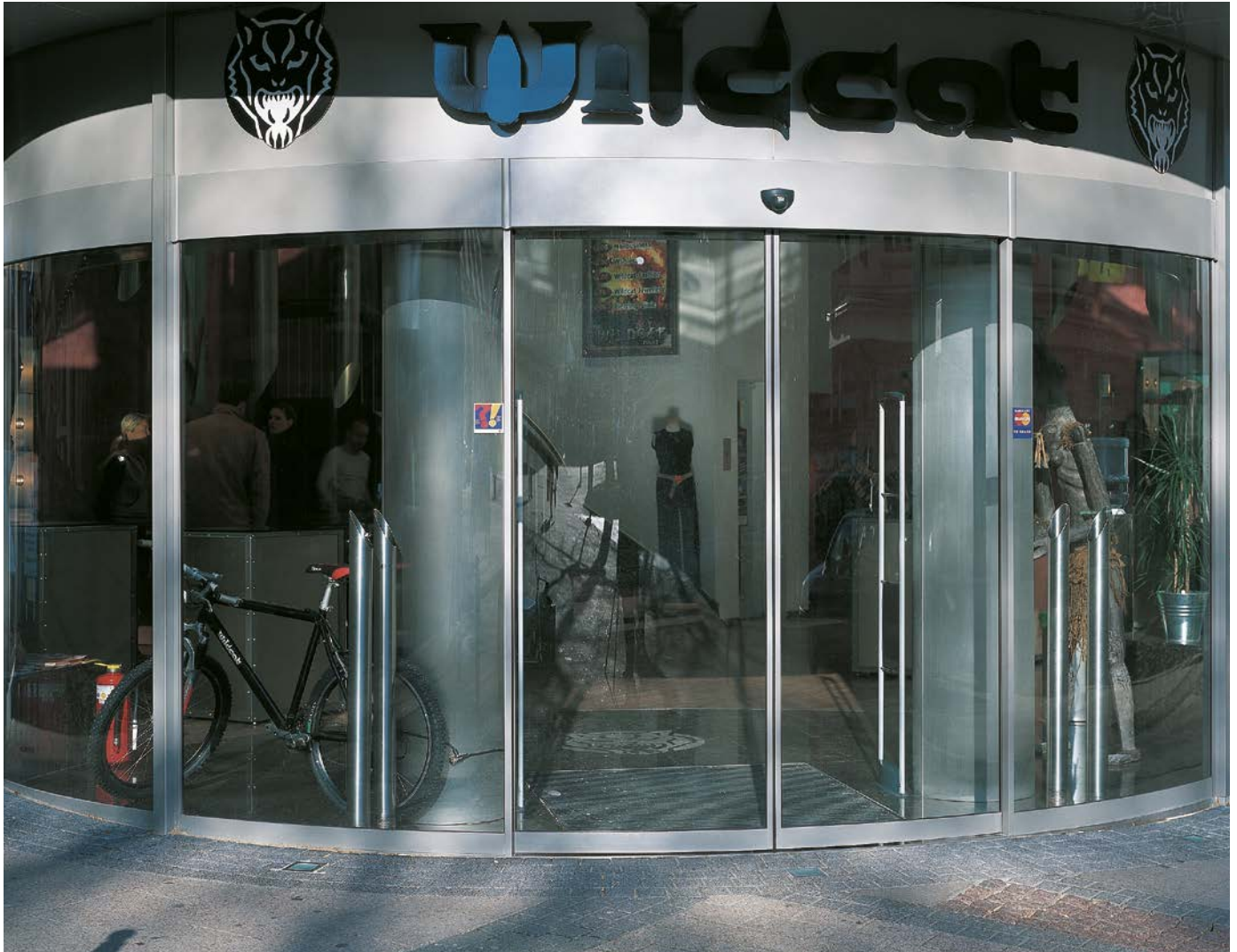


For more information, see here:
www.dormakaba.xxx/xxx



Curved sliding doors

BST/FBST



With dormakaba curved sliding door systems, entrance areas can be designed to be interesting and individual: curved semicircles, segments of full circles, ovals, double segments – anything is possible.

With max. leaf weights of 130 kg on the curved sliding door (BST) or max. 110 kg on the emergency and escape route variant FBST, passage widths of 1,000 to 2,500 mm are achievable.

The curved sliding doors offer a wide range of design options thanks to their variety of designs and high variability.

Simply effective:

- Versatile
- Very convenient to use
- Large selection of modular components and operating modes
- Adjustable speeds
- Optional with emergency and escape route (FBST)
- Type-tested and certified according to DIN 18650/EN 16005



For more information, see here:
www.dormakaba.xxx/xxx

Revolving doors

Thanks to their closed design, revolving doors save as much energy as possible on building entry and exit. Without the draft that is otherwise associated with opening doors, the interior area near the revolving door can be used optimally for a reception or sitting area. The simultaneously possible passage from inside and outside allows optimal footfall levels to be achieved.

Simply effective:

- Large selection of modular components and operating modes
- Two- to four-leaf variants
- With or without night shutters with various locking options
- Manual, equipped with automatic positioning system
- Servo-assisted or automatic revolving doors



Revolving doors

Revolving doors – an overview



	KTC 2	KTC 3/KTC 4	KTV 3/KTV 4
Type	Large-capacity revolving door	Large-capacity revolving door	Standard revolving door
Diameter (mm)	3600, 4200, 4800, 5400	3600, 4200, 4800, 5400, 6000/6200 ¹⁾	2000–3800
People/minute²⁾	39–58	31–73	17–45
Operating modes			
Manual			●
Automatic positioning			●
Servo operation			●
Automatic	●	●	●
Number of leaves	2	3 and 4	3 and 4
With integrated sliding door	●		
Resistance class			
Glass cover			○
Showcase	○	○	
Optical separation			
Bullet- and burglar-resistant			

● Standard ○ Optional

1) depending on number of leaves

2) depending on diameter and number of leaves



KTV ATRIUM	Talos	Geryon
All-glass revolving door	Individual revolving door	Security revolving door
2000–2800	2100–3700	1500–2000 (Grid 100)
26–45	16–28	up to 20
●		
●		
●	●	●
●	●	●
3 and 4	3 and 4	3 and 4
	RC 2 and WK 3	RC 2 and WK 3
		○
		○

Revolving doors

KTC 2



Double-leaf large-capacity revolving doors with integrated automatic ST FLEX sliding door.

Simply effective:

- Very convenient to use
- Adjustable speeds
- Integrated night shutters
- Reduced energy requirements thanks to climate separation
- Type-tested and certified according to DIN 18650/EN 16005



For more information, see here:
www.dormakaba.xxx/xxx

KTC 3/KTC 4

Automatic three- and four-leaf large-capacity revolving doors up to 6.2 m in diameter.

Simply effective:

- High footfall
- Adjustable speeds
- Three- and four-leaf versions with/without showcase



For more information, see here:
www.dormakaba.xxx/xxx



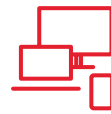
KTV 3/KTV 4



Manual, power-assisted or fully automatic three- and four-leaf revolving doors up to 3.8 m in diameter.

Simply effective:

- Planning security thanks to the upgrade options for the direct drive
- Direct drive means very smooth running and positioning accuracy
- Various configuration options
- Possible reduction of temperature exchange between indoor and outdoor areas
- Three- and four-leaf versions
- Type-tested and certified according to DIN 18650/EN 16005
- With Environmental Product Declaration (EPD)



For more information, see here:
www.dormakaba.xxx/xxx

KTV ATRIUM

All-glass revolving doors with three and four door leaves, with glass cover, drive unit in floor.

Simply effective:

- Invisible drive and control technology
- Operating modes: manual, servomatic, automatic positioning
- Type-tested and certified according to DIN 18650/EN 16005



For more information, see here:
www.dormakaba.xxx/xxx



Revolving doors

Talos RDR-E01

Three- and four-leaf revolving doors with particularly flexible configuration options to meet specific customer requirements.

Simply effective:

- With 8 mm laminated safety glass, alternatively metal-clad
- Option: Push pad for use by disabled people
- Models in resistance class RC2
- Protective sensor system compliant with EN 16005



For more information, see here:
www.dormakaba.xxx/xxx



Talos RDR-C01



Versatile standard system with optional break-in resistance up to WK3 and additional options.

Simply effective:

- Extended range of options compared with RDR-E01
- With 8 mm laminated safety glass, alternatively metal-clad
- Transparent all-glass units with filigree profiles
- Option: Disabled push to open button for accessible use
- Models in resistance classes RC2 and WK3
- Protective sensor system compliant with EN 16005



For more information, see here:
www.dormakaba.xxx/xxx

Talos RDR-C03

Safety and convenience for users thanks to automatic starting and escape route function even in the standard version.

Simply effective:

- Toughened safety glass, including break-out symbols to attach to the door leaves
- Two bar locks for locking the rotating unit at the top and bottom



For more information, see here:
www.dormakaba.xxx/xxx



Talos RDR-S01



With glass cover comprising two laminated safety glass segments.

Simply effective:

- Transparent all-glass units with filigree profiles
- Bolt lock, prepared for on-site profile cylinder



For more information, see here:
www.dormakaba.xxx/xxx

Security revolving doors



The Geryon product family includes security revolving doors and security turnstiles. Security revolving doors are suitable both for indoor use and for entrances.

Simply effective:

- Nobody gets stuck thanks to end point locking
- Protective sensor system compliant with EN 16005
- Standard with IR sensor system
- Models in resistance classes RC2 and WK3
- All-glass unit with operator in floor
- Option with installed scales, weight limits or actual weight
- Option with night locking
- Option with optical separation by SRD Vision



For more information, see here:
www.dormakaba.xxx/xxx

Geryon SRD-E01

The unit can be supplied in resistance class RC2 if desired.

Simply effective:

- With glass panel, alternatively metal-clad
- Rigid rotating unit T40, optional hinged rotating unit T56
- Separation level can be customized by various sensor technologies



Geryon SRD-C01

The Geryon SRD-C01 security revolving door is metal-clad as standard, but is also available glass-clad if required. WK3 is available as an option. Optional bullet-resistant version.

Simply effective:

- Stainless steel visible surfaces
- Glazed if required
- Optional weight monitoring or contact mat



Security revolving doors

Geryon SRD-S01



The Geryon SRD-S01 security revolving door is a full-glass unit and also available in resistance class RC2. It is particularly suitable for high-profile environments.

Simply effective:

- With glass panel
- All-glass unit, no metal cladding
- With glass panel and filigree profiles
- Laminated safety glass cover
- T25 without center column or profile, toughened safety glass
- Single-zone contact mat(s) monitor(s) the barrier segment(s); underfloor built-in control unit



For more information, see here:
www.dormakaba.xxx/xxx

Security turnstile

Geryon STS-S02



Security turnstile for controlled access.

Simply effective:

- Nobody gets stuck thanks to end point locking
- With 8 mm laminated safety glass
- Upper aluminum panel dust-proof
- Control unit integrated into unit
- Two maintenance flaps in the lower cover plate
- Barrier element made of aluminum alloy rectangular profiles
- Bars available either in stainless steel or acrylic glass



For more information, see here:
www.dormakaba.xxx/xxx

System components and accessories for Entrance Systems

Buttons and switches



Mechanical activator.

Simply effective:

- Manual impulse to open a door
- Large-area push buttons also enable impulse to be generated with the elbow
- Stainless steel push buttons are suitable for special hygiene requirements

Program switch



Program switch.

Simply effective:

- Control up to five different functions of the automatic door: Off, automatic, exit (shop closing time), seasonal opening (winter opening), permanent opening
- Operation can be mechanical through a rotary knob or key or electronic through a pushbutton

Radar motion detector



Activator for contactless opening.

Simply effective:

- Impulses are given without contact and automatically
- Creation of barrier-free entrances

LED sensor button



Activator, electronic, with optical feedback.

Simply effective:

- Effortless operation by simply touching the surface
- Optical feedback
- Glass version for use in hygienic areas
- Waterproof and shock-resistant



For more information, see here:
www.dormakaba.xxx/xxx

System components and accessories for Entrance Systems



Laser scanners and infrared sensor strips



Safety sensors.

Simply effective:

- Protection of the passage area
- Protection of the main closing edge
- Protection of the secondary closing edge (note residual risk)
- For automatic hinged doors according to DIN 18650/EN 16005

Bidirectional radio system



BRC radio system.

Simply effective:

- Targeted wireless control
- Stationary and mobile solutions with battery operation
- Receiver unit BRC-R can be installed invisibly in dormakaba operators



Safety curtain

Non-contact protection of the door leaf movement of automatic sliding and special doors.

Simply effective:

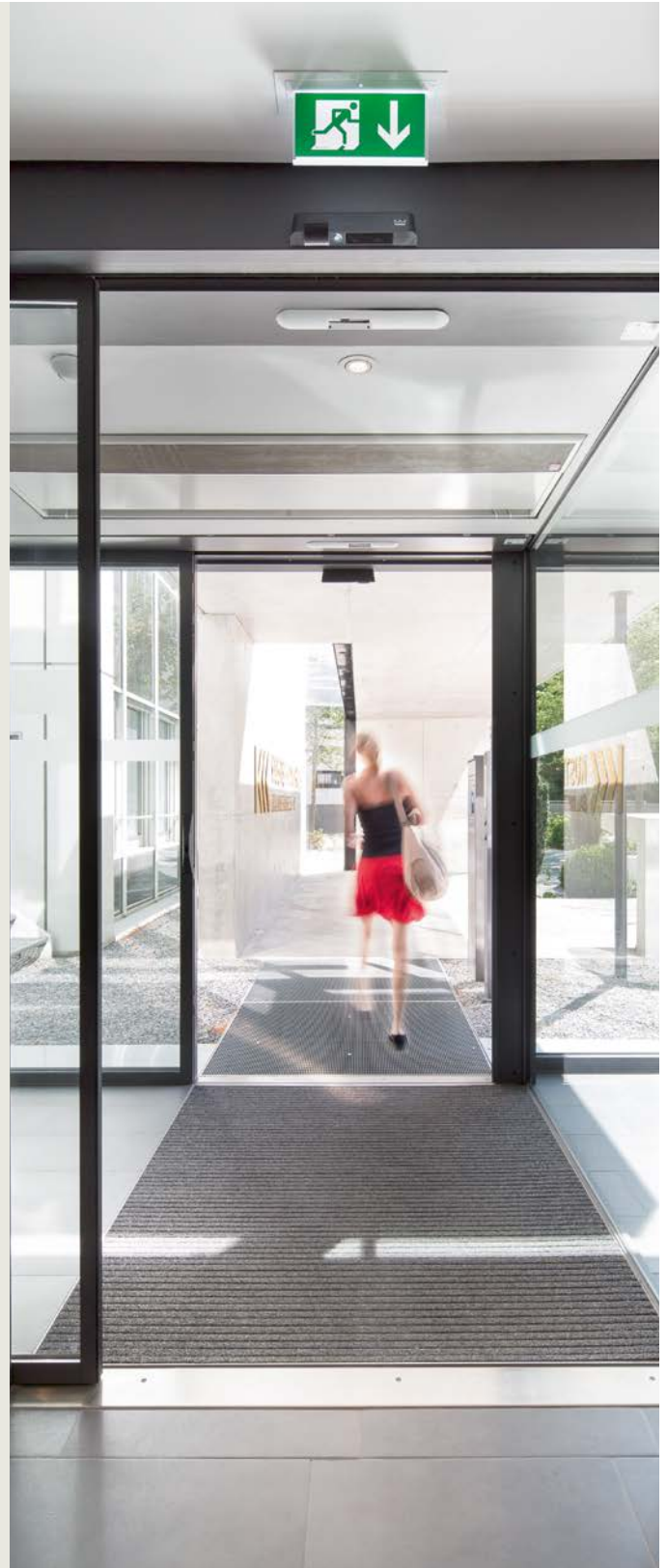
- Monitors the opening movement. If a person is in the detection area, the opening movement is stopped
- Invisible infrared light curtain
- Evaluates reflections
- Automatically learns environmental conditions

Combination sensor (protection and radar impulse delivery)

Combination device for impulse transmission by a radar motion detector and protection of the door leaf movement. Particularly suitable for automatic sliding and special doors.

Simply effective:

- Protection against unauthorized use by means of a numerical code or an additional key switch (electronic variants)
- Additional program switch error display for sliding doors in emergency and escape routes



Security interlocks

Orthos electronically monitored security interlocks meet the highest security requirements and offer optimum protection for the sensitive areas of a building.

The Orthos product family includes all forms of security interlocks, whether round or square, for single entry and interlocks with several entrance systems in succession, which must be passed through in one direction only.

Simply effective:

- High levels of safety thanks to contact mats
- Additional safety thanks installed scales, weight limits or actual weight
- Resistance classes RC2/WK2, WK3 and up to WK4 for cubic interlocks
- PMA release switch inside the interlock opens outer door
- Optional wing and folding doors and automatic locking
- Optional fire protection door
- Optional escape route function
- Optional bullet and break-in resistance
- Elegant glass units
- Quiet, low-noise operation



Security interlocks

Security interlocks – an overview



Standard units	PIL-S01	PIL-C01	PIL-M01
Construction			
Outer diameter (mm)	1020, 1120, 1220, 1320, 1420, 1520, 1620	1020, 1220	
External dimension			Depends on combination
Upper part length (mm)			800–2000
Passage width (mm)	520, 580, 650, 710, 780, 840, 910	550, 680	800–1200
Overall height (mm)	2300	2400	2330
Passage height (mm)	2100	2100	2100
Carcass upper part (mm)	200	300	230
Carcass			
Glass side panels, alternatively metal-clad	●		
Side parts with metal-clad steel substructure		●	
Upper part with dustproof cover and ceiling plate contains control and monitoring elements			●
Resistance class			
with RC 2	○		○
RC 3 or RC 4			○
with WK 2 or WK 3		○	
Interior			
Including black rubber coating	●		
Including lighting		●	
With surface light scanner as relaying element			●
Outer/inner door			
Hinged door, folding door, sliding door, fire protection door or on-site door			○
Sliding doors			
In aluminum alloy profiles with curved glass, flush-mounted on the outside	●		
In aluminum alloy profiles with curved glass, flush-mounted on the outside. Version according to the selected resistance class.		●	

● Standard ○ Optional

Security interlocks

Orthos PIL-S01



Versatile round security interlocks.

Simply effective:

- With glass panel, alternatively metal-clad
- Interior space with surface light scanner as relaying element
- Includes single-zone contact mat with black rubber coating
- Light curtain for non-contact protection



For more information, see here:
www.dormakaba.xxx/xxx

Orthos PIL-C01



Versatile round security interlocks, including LED lighting.

Simply effective:

- With steel substructure, metal-clad
- In aluminum alloy profiles with curved glass, flush-mounted on the outside
- Safety rails on the main closing edges that move with the door



For more information, see here:
www.dormakaba.xxx/xxx

Security interlocks

Orthos PIL-M01



Versatile cubic security interlocks.

Simply effective:

- Carcass upper part with dustproof cover and ceiling plate including control and monitoring elements
- Option (interior and outer doors): hinged, folding, sliding door or fire protection door
- Interior space with surface light scanner as relaying element
- CAN bus control unit ETS 21 integrated in the unit
- Installation of the side panels on finished floors



For more information, see here:
www.dormakaba.xxx/xxx

Orthos PIL-M02



Ensures safe passage in a permitted direction when there is a large number of people. The door detects and inhibits passage attempts in the unauthorized direction.

Simply effective:

- Detection of objects thrown through (optional)
- High degree of modularity
- No access from above required: Control units installed in side panel
- Sensor technology independent of ambient light
- Open ceiling construction (easy integration into existing smoke detection and sprinkler systems)



For more information, see here:
www.dormakaba.xxx/xxx

Tripod turnstiles



Waist-high tripod turnstiles provide access control in entrances to office or administrative buildings, industrial facilities, banks, public authorities and many sports and leisure facilities to relieve the strain on reception staff. They are fast, reliable and easy to use.

Simply effective:

- Hinged bars and automatic readjustment
- Modular single and multiple installation
- Easy passage thanks to servo position drive
- Minimum energy consumption thanks to low-energy operator
- Safe passage thanks to low-energy operator
- Suitable for outdoor installation
- With additional equipment, suitable for installation in emergency and escape routes
- Barrier-free solutions together with automatic swing doors in a suitable design
- Manual motion; mechanically locked in one direction free/counter-direction (**type 0**)
- Manual motion; one direction electrically controlled/reverse direction locked (**type 1.1**)
- Manual motion; two directions electrically controlled (**type 1.2**)
- Motorized motion; servo position drive/two directions electrically controlled (**type 2**)



Kerberos TPB-L07

Tripod turnstile with housing and feet in a single unit
(Motion **type 0, 1.1, 1.2, 2**)



For more information, see here:
www.dormakaba.xxx/xxx



Kerberos TPB-C01
 Tripod turnstile with feet and additional AISI 304 stainless steel rear panel
 (Motion **type 2**)



Kerberos TPB-L06
 Double tripod turnstile with housing and feet in a single unit
 (Motion **type 0, 1.1, 1.2, 2**)



Kerberos TPB-E01
 Tripod turnstile with housing and feet in a single unit
 (Motion **type 0, 1.1, 1.2, 2**)



Kerberos TPB-S03
 Tripod turnstile with housing, feet and flange plate
 (Motion **type 2**)



Kerberos TPB-L04
 Tripod turnstile with housing for mounting on on-site apparatus, signal unit with display in red/green, angular design flush-mounted in the housing
 (Motion **type 0, 1.1, 1.2**)



Kerberos TPB-M04
 Tripod turnstile with integrated pay machines and optional receipt printer
 (Motion **type 2**)

Half-height turnstiles



The waist-high Charon turnstiles, with a multitude of design variants, make for sophisticated interior design. These stylish turnstiles combined with swing doors control visitor and employee flows in high-profile entrance areas, VIP rooms or at the entrance to the executive floor. All units can be combined with time recording systems and card readers – including contactless and biometric systems.

Simply effective:

- Quiet, low-noise operation
- Motion is motorized: Servo position drive in two directions, electrically controlled
- Motion is motorized
- Low power consumption
- Elegant, transparent design
- Space-saving even with multiple installations
- Easy passage thanks to servo position drive
- Barrier-free solutions with automatic swing doors in suitable designs
- Swing doors, suitable for installation in emergency and escape routes
- Varied designs of the glass leaves, guiding elements and push bars
- Height can be adapted to 1,200 mm if required



For more information, see here:
www.dormakaba.xxx/xxx



Charon HTS-E01
Turnstile with three U-shaped stainless steel barrier elements



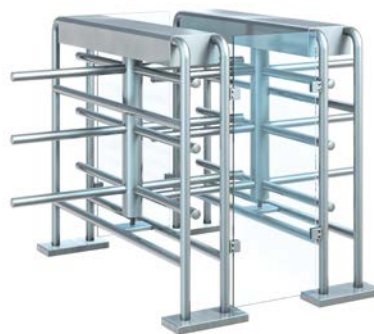
Charon HTS-E03
Turnstile with three high glass elements and stainless steel push bar



Charon HTS-M01
Turnstile with swing door with high glass elements and stainless steel push bars. Turnstile with 180° turning cycle for person separation as well as for transport opening as soon as turnstile and swing door are opened together 90°.



Charon HTS-L01
Turnstile with straight crossbars, three each made of stainless steel, barrier element made of stainless steel plate with posts to protect against unauthorized entry to intermediate sector



Charon HTS-L02
Double turnstile with straight crossbars, three each made of stainless steel

Turnstiles



Versatility

The Kentaur product family is modular in design. Two-, three- and four-winged units with straight or curved bars can be combined with each other. Additional variants with bicycle gate, integrated door, escape route function or in resistance class RC2. The roofs fit all single, multiple or space-saving double units.

Simply effective:

- Nobody gets stuck thanks to end point locking
- Versions with integrated bicycle gate, full-height gate for barrier-free access or goods transport
- Turnstile column and bars made of robust stainless steel
- Rotation speed adapts to those passing through
- Low-energy drive
- Low power consumption
- Freely selectable behavior in the event of a power failure
- Can be used in areas with aggressive environmental influences
- Integrated, parameterizable random generator
- Second identification for additional security possible
- Spacing between the shearing edges eliminates risk of injury
- Suitable for max. snow load of 4.28 kN/m² = snow load zone 3 according to DIN EN 1991-1-3
- Suitable for max. wind force of 108 km/h = wind force zone 4 according to DIN EN 1991-1-4



For more information, see here:
www.dormakaba.xxx/xxx



Kentaur FTS-E01

Turnstile separation segments: 180°, each with stainless steel straight crossbars, polished



Kentaur FTS-L04

Turnstile separation segments: 90°, each with stainless steel straight crossbars, polished



Kentaur FTS-E02

Turnstile separation segments: 120°, each with stainless steel crossbars, polished



Kentaur FTS-E03

Turnstile separation segments: 90°, each with stainless steel straight crossbars, polished



Kentaur FTS-E04

Turnstile separation segments, resistance class RC2: 120°, with stainless steel straight crossbars, polished, with curved steel bars



Kentaur FTS-E05

Turnstile separation segments: 120°, each with steel straight crossbars, galvanized

Turnstiles



Kentaur FTS-E06

Double turnstile separation segments: 120°, each with stainless steel straight crossbars, polished. Low space requirements thanks to interlocking rotating units



Kentaur FTS-M01

Turnstile separation segments: 120°, with stainless steel straight crossbars, polished. Waist-high, made of curved tubular stainless steel with plate panels, automatic bicycle gate



Kentaur FTS-M03

Turnstile separation segments: 180°, with stainless steel straight crossbars, polished. Integrated full-height gate for on-request opening with straight crossbars and continuous frame. With steel columns and climb-over protection



Kentaur FTS-M05

Turnstile separation segments: 180°, with stainless steel straight crossbars, polished. Integrated full-height gate with straight crossbars and continuous frame. With steel columns and climb-over protection. The unit has an escape route function.



Kentaur FTS-L01

Double turnstile separation segments: 90°, with stainless steel straight crossbars, steel middle section and stainless steel-clad front sides, satin matt finish, low space requirements thanks to interlocking rotating units



Kentaur FTS-L05

Turnstile separation segments: 90°, with stainless steel straight crossbars, made of steel and stainless steel-clad on the front sides



Kentaur FGE-M01

Full-height gate for barrier-free passage of persons and goods transport



For more information, see here:
www.dormakaba.xxx/xxx

Sensor barriers



Argus 40

This compact model has everything an elegant sensor barrier needs.

Simply effective:

- With a length of just 1,200 mm, the interlock is also suitable for narrow installation situations
- It impressively combines fine materials and functional basic equipment
- Optional panels in the middle of the profile can close the open carcass
- A purely aesthetic, complete sensor barrier



For more information, see here:
www.dormakaba.xxx/xxx

Argus 60

This sensor barrier will be a real feature of your foyer. The 1,650 mm long variant of the sensor barrier offers more possibilities than the Argus 40.

Simply effective:

- Increased level of security
- Additional sensor through strip running perpendicular to the horizontal protective sensor strip
- Light band on handrail
- Ambient lighting
- Highly transparent door leaves
- The door leaves can be raised if required, unlike the standard version.



For more information, see here:
www.dormakaba.xxx/xxx

Argus 80

An all-round high-quality design: The interlock looks particularly solid and sophisticated because the upper part with the vertical frame pivots in front and behind is worked in one seamless piece – as a full cast layer. The shimmering metal looks like an “endless” handrail. The full cast layer only extends the interlock by 1 cm.

Simply effective:

- Multiple color combinations
- Chase
- Ambient lighting
- Can be customized
- Highly transparent door leaves
- The door leaves can be raised if required, unlike the standard version.



For more information, see here:
www.dormakaba.xxx/xxx

Sensor barriers

Argus HSB-M03 Self-Boarding

Waist-high sensor barrier, designed as an e-gate for self-boarding. Helps airport and ground staff keep the boarding process smooth and steady.

Simply effective:

- The unit can reduce queues and improve service by allowing passengers to walk through automatic gates and ground staff to take care of passengers who need help.
- Compatible with all biometric systems
- Ideal for airports



For more information, see here:
www.dormakaba.xxx/xxx



Argus HSB-M03 Boarding Pass Check

Waist-high sensor barrier, designed as an e-gate in the terminal. Helps staff ensure controlled access to the security area – smoothly and efficiently.

Simply effective:

- Integrated boarding pass reader and integrated display for passenger information
- System detects boarding pass misuse (e.g. double use)
- Passenger flow is improved
- The gate allows people to pass through with trolley cases, rucksacks and other luggage without triggering an alarm
- Ideal for airports



For more information, see here:
www.dormakaba.xxx/xxx



Speed gates



The HSG speed gates have sliding doors in different heights. Other features include the high-quality sensor technology and the solid stainless steel housing. During passage, the sliding doors move quickly into the housing – this enables particularly high footfall. Additional versions with increased passage width are available as barrier-free solutions.

Simply effective:

- Easy passage, even with bags or luggage
- No contact with door leaves
- High throughput frequency with high level of personal safety
- Robust stainless steel body
- Modular system with basic and extension units for multiple installation
- Automatic sneak-by guard (observe safety level)
- Acoustic alarm in case of unauthorized use
- Detection of children (observe safety level)

Argus HSG-E01

Two barrier elements in toughened safety glass, upper edge 1,200 mm (max. 1,800 mm).



For more information, see here:
www.dormakaba.xxx/xxx



Argus HSG-L01

Curved, motorized motion of the two door leaves into the housing.



For more information, see here:
www.dormakaba.xxx/xxx



Swing doors



In terms of design, the swing doors are based on the dormakaba waist-high access units. They complement the access units, making them suitable for goods transport or barrier-free access for wheelchair users. All automatic swing doors can be connected to access control systems.

Simply effective:

- Adaptable design
- Transparent and filigree elements in stainless steel and glass
- Perfect addition to tripod turnstiles, waist-high turnstiles, sensor barriers as well as for goods transport and barrier-free access
- Easy passage thanks to servo drive
- Quiet, noiseless operation
- Unit also opens under load
- Unit locks in any position
- Separation of drive and locking forces
- Low energy consumption
- Suitable for use in emergency and escape routes
- Easy mounting on finished floors



For more information, see here:
www.dormakaba.xxx/xxx



Charon HSD-E01
Waist-high swing door with rectangular barrier element



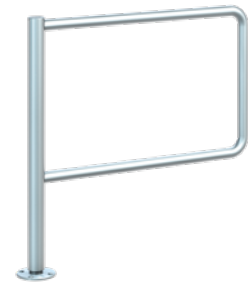
Charon HSD-E02
Waist-high swing door with curved barrier element



Charon HSD-E03
Waist-high swing door with glass element, toughened safety glass, 10 mm upper edge, leaf 900 mm



Charon HSD-E06
Waist-high swing door with glass element, toughened safety glass, 10 mm upper edge, leaf up to max. 1,800 mm



Charon HSD-L01
Manual waist-high swing door with rectangular barrier element



Charon HSD-L06
Waist-high swing door in transparent polycarbonate; wall mounting



Charon HSD-L07
Manual waist-high swing door with rectangular barrier element including door closer and lever protection for opener latch



Charon HSD-L08
Manual waist-high swing door with escape route function and barrier element with through hole for children

Pedestrian guiding bars

PGB



Simply effective:

- Available with or without glass panel
- Easy installation on finished floors
- Suitable for outdoor installation
- In AISI 304 stainless steel, satin matt finish



PGB-E01

Pedestrian guiding bars



PGB-E02

Pedestrian guiding bar with guiding rail, height: 320 mm



PGB-E03

Pedestrian guiding bar with guiding rail, height: 320 mm



PGB-S01

Pedestrian guiding bar as variable all-glass barrier system with two end posts



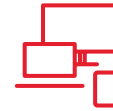
For more information, see here:
www.dormakaba.xxx/xxx

Reading posts

CRP

Simply effective:

- Ready for on-site installation of a Legic antenna LA-PP and dormakaba AM control unit
- Can be adapted to various reader systems
- Presence detection for unreadable cards
- Easy mounting on finished floors
- Weather protection hood for outdoor installation (CRP-M02, CRP-M03)
- In AISI 304 stainless steel



For more information, see here:
www.dormakaba.xxx/xxx



CRP-E01

Reader post with aluminum spacer, 80 mm x 35 mm, in RAL 9006, with cable bore for customer's reader plate (surface-mounted)



CRP-E03

Pedestal with removable inspection opening for installation of on-site components, max. installation dimensions 170 mm x 140 mm x 150 mm (H x W x D)



CRP-C01

Reader post with beveled head (30°). Installations must be checked on a case-by-case basis



CRP-M01

Reader post for verifying and collecting identification, together with protective cover and clip holder. Integrated card return tray, signaling device and lockable collection container



CRP-M02

Reader post for verifying and collecting identification, together with protective cover and clip holder. Integrated card return tray, signal system and lockable collection container.



CRP-M03

Reader post for verifying and collecting identification, together with protective cover and clip holder. Integrated card return tray, signal system and lockable collection container. At car and truck height



Electronic Access & Data

Employees' access rights and working hours can now be better organized. We offer complete access and data management solutions for any situation or structure. Our product compatibility and interoperability mean all factors work together to adapt to your company's requirements.

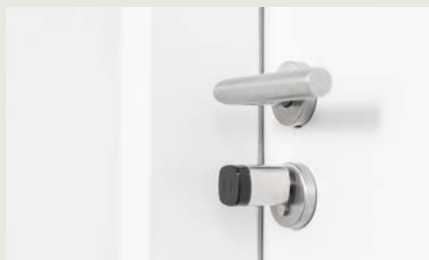


Electronic Access & Data

Stay informed of day-to-day operations: who, what, where and when.



Employees' time is a production factor. Access control and time recording, need a smart master plan to track and to evaluate them efficiently. Integrated electronics and a digital network connection give both smaller and larger companies, and private households, new options. To-the-second management of access rights from the underground garage to the topmost floor is comprehensive and secure, down to the last detail. Even the device design adopts a holistic approach: The card readers fit exactly to the cylinders and fittings, every user interface is clear, compact and consistently functional.



Electronic cylinders

State-of-the-art stand-alone cylinders can be instantly reprogrammed.



Electronic door locks

Keyless access with transponder, RFID card or app. Integrated door fitting design.



Card readers & peripherals

Efficient readers and access control units at every indoor and outdoor access point.



Access Media and Badges

Control access digitally with a smart key, access card, transponder or smartphone app.



Access control solutions for Corporate

Modules that can be precisely configured for efficient coordination and increased security.



Access control solutions for SAP

Access management and time recording for optimized processes thanks to dormakaba and SAP.



Access control solutions for small and medium-sized enterprises

Comprehensive access management that's affordable for companies of all sizes.



Access control solutions for Microenterprises and Residential

Control all access rights via smartphone and functional app.



Time & Attendance

Intuitive operating elements for time recording, access control and employee communication.



Shop floor data collection

Intelligent management of machine scheduling, inventory, quality and maintenance data.



Solutions for ERP systems

Simple integration, recording and evaluation of the dormakaba terminals in your ERP system.



Interfacing solutions for third-party applications

Simple integration, recording and evaluation of the dormakaba terminals in your ERP system.



Technology and function principles

Security concepts based on RFID, biometrics or smartphone apps.

Electronic cylinders

dormakaba digital cylinder

The locks with both visual and acoustic signals enable access to be controlled precisely in terms of time and space. The modular design with removable knobs means extremely easy mounting. In addition to the standard version, the portfolio also includes dual, half and anti-panic cylinders.



Simply effective:

- Can be used for any door in interior or weather-protected exterior areas
- The electronics function reliably, even at extreme temperatures
- Suitable for fire protection doors
- Increased drill protection for better security
- Available in Euro profile 17 mm, Swiss profile, oval profile, ANSI
- With black or white face
- Cylinder surface in stainless steel look, polished brass, matt chrome or black
- Modular design – length can be adjusted on site
- Supports the mobile access function – users receive access rights on their smartphone via the dormakaba app



For more information, see here:
www.dormakaba.xxx/xxx

Mechatronic cylinder

The locking system, which connects a mechanical cylinder with an electronic access control system, integrates seamlessly into existing mechanical locking systems. It is ideal for use on exterior doors, for example. The smart key with an RFID chip can open both mechanical doors and doors equipped with mechatronic cylinders.



Simply effective:

- Flexible access system: complete or partial switch from mechanics to electronics possible
- Unique range: a wide and dynamic spectrum of award-winning access components
- Available in several profile variants such as Euro profile, Swiss profile and Scandinavian oval profile
- Plastic cover available in black and white
- Wireless solution connects the mechatronic cylinder with the access solution remotely and enables programming to be conveniently carried out from your desk



For more information, see here:
www.dormakaba.xxx/xxx

Electronic door locks

dormakaba c-lever pro



Electronic fitting solutions for demand-driven access control on external doors or doors with increased security requirements. Simple, flexible control of access rights in stand-alone, remote or online mode. High-quality materials meet the highest standards in durability, weather-proofing and security.



Simply effective:

- For interior or weather-protected exterior areas
- Can be mounted directly on wooden, plastic or metal doors
- Solutions for protection against burglary and fire, as well as emergency and escape routes
- Various modes of operation: Stand-alone (incl. CardLink and Access-on-Card), wireless with door monitoring, battery and/or external power supply, NFC, Bluetooth®, mobile access
- Access with card, key fob, key with RFID or smartphone
- Supports mobile access – users receive access rights on their smartphone via the dormakaba app
- TouchGo function: hands-free, the transponder stays in your bag
- Suitable for the side facing away from the emergency escape route in accordance with the requirements of standard DIN EN 179, when using certified device combinations



For more information, see here:
www.dormakaba.xxx/xxx

dormakaba c-lever compact



Electronic fitting solutions for use in office, administrative or retail areas. Access rights can be easily and flexibly controlled – either in stand-alone or wireless mode. On presentation of a valid means of access, the green signal appears in the digital lighting unit and the door can be opened as usual with the door handle.



Simply effective:

- Whatever the lock and fitting
- Simple, wireless mounting – even in an inverted position
- Various modes of operation: Stand-alone (incl. CardLink and Access-on-Card), wireless, NFC, Bluetooth®, mobile access
- Consistently compatible and award-winning products with unique component diversity such as readers, digital and mechatronic cylinders
- Supports the mobile access function– the door can be opened with a smartphone
- Suitable for the side facing away from the emergency escape route in accordance with the requirements of standard DIN EN 179, when using certified device combinations
- Ideal for retrofitting projects, no wiring required thanks to the use of batteries integrated in the door handle



For more information, see here:
www.dormakaba.xxx/xxx

Electronic door locks

dormakaba c-lever air

Electronic fitting that is as flat as a normal door fitting. The technology is not in the fitting itself, but in the handle. The c-lever air meets strenuous aesthetic and functional demands. Its streamlined design has already won several design awards. The c-lever air fitting can be integrated into all dormakaba solutions and supports the latest RFID technologies.



Simply effective:

- Flattest electronic fitting
- For interior doors, for example in design-oriented architecture, in modern offices or in museums and galleries
- Ideal for retrofitting projects, no wiring required thanks to the use of batteries integrated in the door handle
- Various modes of operation: Stand-alone (incl. CardLink and Access-on-Card), wireless, NFC, Bluetooth®, mobile access
- Suitable for the side facing away from the emergency escape route in accordance with the requirements of standard DIN EN 179, when using certified device combinations
- Supports the mobile access function– the door can be opened with a smartphone



For more information, see here:
www.dormakaba.xxx/xxx

dormakaba cabinet lock 21 10

Electronic lock solutions for wardrobes, lockers or furniture. Secure access to important documents, valuables or materials using electronic access control. On presentation of a valid means of access at the cabinet, the door opens automatically.

Simply effective:

- Lock is mounted inside the cabinet – no operating element disrupts the design of the furniture door
- Easy to integrate – seamless integration into the system environment with digital cylinders, electronic fittings, readers and mechatronic cylinders
- Easy to program – for permanent or temporary access
- Long-life battery – up to five years of operation
- Alarm in the event of attempted break-in
- Streamlined design – suitable for most office furniture and drawers
- Many areas of application: Wardrobe or material cupboards, depot and mailboxes, office furniture, medications and patient cabinets



For more information, see here:
www.dormakaba.xxx/xxx

Card readers & peripherals

Compact and remote readers – an overview



	Compact readers			Remote readers	
Readers	91 04	91 10	91 12	91 15	91 25
MRD (multi-RFID device)	●	●	●	●	●
Mobile access (NFC)	●	●	●	●	●
Mobile access (Bluetooth®)	●		●		
Interfaces					
RS485	●	●	●	●	●
Coaxial connector for registration unit				1	2
Digital I/Os					
Number of inputs	2	2	2	2	4
Number of relay outputs	1	1	1	1	3
Input for tamper contact			1		1
Power supply					
10–34 V DC	●	●	●	●	●
Construction/mounting					
Surface-mounted cable routing	●	●	●		
Flush-mounted cable routing	●	●	●		
Rail mounting				●	●
IP protection class					
	IP 54/IP 66	IP 40/IP 54	IP 66	IP 20	IP 20
Certifications					
CE	●	●	●	●	●
FCC	●	●	●	●	●
UL 60950	●	●	●	●	●
UL294	●	●	●		

● Standard

Compact readers

dormakaba compact reader 91 04

The streamlined compact reader blends harmoniously into any building. Hold either card, key fob or key with RFID against the reader and enter – the reader signals the release visually and acoustically. The slim design enables direct installation on metal, wood and plastic door frames.



Simply effective:

- For door frame mounting as coordination reader or as an access reader in conjunction with an access control unit in the protected area
- Waterproof and weatherproof
- Supported RFID technologies:
LEGIC prime/advant or MIFARE Classic/DESFire
- Functions in online, mobile access, CardLink, Access-on-Card, wireless or stand-alone mode
- Available with integrated Bluetooth® for mobile access
- Quick and easy installation with Quickwire technology
- Contemporary, streamlined, robust design
- Available in black or white



For more information, see here:
www.dormakaba.xxx/xxx

Card readers & peripherals

Compact readers

dormakaba compact reader 91 10

The compact readers can be used in any access solution. Always online, the readers, together with a control unit, ensure a high level of security. They are particularly suitable for access within an organization. Users use their RFID card for contactless identification on the compact reader. This checks and interprets the recorded data and then decides whether to grant access.



Simply effective:

- For wall mounting
- Central light symbol and acoustic symbol inform the visitor whether access has been granted or not
- Supports the RFID-Standards LEGIC prime and advant as well as MIFARE Classic and DESFire
- Quick and easy installation with Quickwire technology
- Contemporary, award-winning high-gloss design
- Available in black or white



For more information, see here:
www.dormakaba.xxx/xxx

dormakaba compact reader 91 12

The compact reader 91 12 is suitable for entrances at which a PIN verification is also required for security purposes.

Simply effective:

- For wall mounting
- Central light symbol and acoustic symbol inform the visitor whether access has been granted or not
- Supports the RFID standards LEGIC prime and advant as well as MIFARE Classic and DESFire
- Quick and easy installation with Quickwire technology
- Contemporary, award-winning high-gloss design
- Available in black or white



For more information, see here:
www.dormakaba.xxx/xxx

Remote readers

dormakaba remote reader 91 15



The reader 91 15 is designed for simple entrances and offers the advantage of a separate registration unit and door control. This makes it suitable for installations in protected interior areas for controlling an entrance that is in an unprotected exterior area.

Simply effective:

- Tamper-proof – installation in the protected interior area
- Complete design freedom, thanks to a choice of registration units
- Functions in dormakaba online, CardLink, Access-on-Card or stand-alone mode
- Can be upgraded, as can be combined with different dormakaba access systems
- Use: External doors and gates, automatic doors, elevators, garage doors, parking barriers, entrance areas, motor locks



For more information, see here:
www.dormakaba.xxx/xxx

dormakaba remote reader 91 25

The 91 25 reader is an effective access control system and is suitable for challenging entrances at which a high level of security is required. It monitors various kinds of entrances.



Simply effective:

- Variety of functions – extensive door controls possible (on/off configuration)
- Flexible and upgradeable – number of inputs and outputs can be increased by using dormakaba add-on modules 90 30 and 90 31
- Tamper-proof – installation of the remote reader in the secure interior area
- Turnstiles, security interlocks, external doors and gates, automatic doors, elevators, parking barriers, entrance areas, motor locks



For more information, see here:
www.dormakaba.xxx/xxx

Card readers & peripherals

Biometric reader

dormakaba biometric reader 91 50

The dormakaba biometric reader 91 50 guarantees clear, legally compliant and convenient access control. It combines the proven identification methods of RFID and fingerprint with a convenient touch keypad. The reader and its high-quality biometric sensor can be used for both biometric identification and verification.



Simply effective:

- Unambiguous identification of people
- Biometric characteristics cannot be forgotten, lost, stolen or passed on to third parties
- No "clocking in for your colleagues"
- Legal certainty – who registered when and where?
- Data protection fully guaranteed thanks to fingerprints that cannot be reconstructed



For more information, see here:
www.dormakaba.xxx/xxx

Registration units – an overview



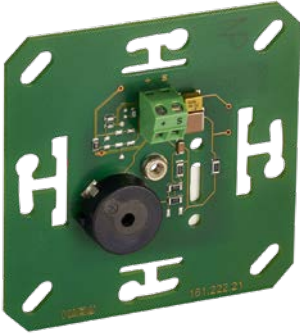
Registration units					
Readers	90 00	90 01	90 02	90 03	90 04
PIN pad			●		
Interfaces					
Coaxial connector	●	●	●	●	●
Construction/mounting					
Surface-mounted cable routing		●	●		●
Flush-mounted cable routing	●	●	●	●	●
Door frame mounting				●	●
IP protection class					
	IP 20	IP 40/IP 54	IP 40/IP 54	IP 40/IP 54	IP 66
Certifications					
CE	●	●	●	●	●
FCC	●	●	●	●	●
UL 60950	●	●	●	●	●

● Standard

Card readers & peripherals

Registration units

dormakaba registration unit 90 00



The unit can be installed in individual or on-site housings. The components are compatible with many European switch covers (e.g. Jung, Gira, Merten, Feller). For Siedle, we offer individual mounting options.

Simply effective:

- Together with dormakaba control units and remote readers, the unit forms a secure access solution with convenient user identification
- Various options for the appearance (housing that comes with the design or housing provided on site) as well as for the read/write properties
- Can be mounted indoors and outdoors



For more information, see here:
www.dormakaba.xxx/xxx

dormakaba registration unit 90 01



Together with the control units and remote readers, the unit secures and controls access to buildings and rooms and is mounted separately from the control unit.

Simply effective:

- Encrypted communication
- Central light symbol and acoustic symbol inform the visitor whether access has been granted or not
- Supports the RFID standards LEGIC prime and advant as well as MIFARE Classic and DESFire
- Contemporary, award-winning high-gloss design
- Scratch-resistant glass finish
- Available in black or white



For more information, see here:
www.dormakaba.xxx/xxx

dormakaba registration unit 90 02

The dormakaba registration unit 90 02 with wear-resistant PIN pad for entrances with increased security requirements can be used in interior areas or protected exterior areas. PIN pad operation is supported by the "Guide by Light" function.

Simply effective:

- Secure access solution with PIN pad
- Integrated tamper contact
- Functions in online, mobile access, CardLink and Access-on-Card mode
- Suitable for retrofitting, existing wiring can be used
- Award-winning design, elegant, with scratch-resistant glass surface



For more information, see here:
www.dormakaba.xxx/xxx

Card readers & peripherals

Registration units

dormakaba registration unit 90 03



The registration unit 90 03 is slim, small and suitable for direct mounting on door frames and most fittings.

Simply effective:

- Extremely compact dimensions for mounting on door profiles or fittings
- Supports RFID standards LEGIC and MIFARE
- Surface mounting even in a metallic environment



For more information, see here:
www.dormakaba.xxx/xxx

dormakaba registration unit 90 04

The dormakaba registration unit 90 04 is characterized by its slim, compact form. It can be mounted directly on metal, wood or plastic door frames. Waterproof and weather-resistant, the device is also suitable for outdoor areas.

Simply effective:

- Suitable for the smallest of spaces, integrates directly into door frames
- Waterproof and weatherproof
- Easy to mount – cable can easily be laid in the door frame; the cable outlet is potted
- Award-winning design, elegant, with scratch-resistant glass surface



For more information, see here:
www.dormakaba.xxx/xxx

Wireless Gateway

dormakaba Wireless Gateway 90 40

The Wireless Gateway 90 40 connects the wireless door components with the access system. It transmits new access rights to the doors remotely. The data is secured by state-of-the-art encryption technology. Non-wired door components are therefore seamlessly connected to the access system.



Simply effective:

- Highly secure – remote communication is encrypted with AES
- Convenient programming from your desk – door and status information are automatically displayed
- Easy to install – thanks to PoE (Power-over-Ethernet), the Gateway does not require any additional power supply
- Upgradeable – the range between the Gateway and door components can be increased by a wireless extender



For more information, see here:
www.dormakaba.xxx/xxx

Card readers & peripherals

Access manager – an overview



Readers	Access manager		
	92 00	92 30	92 90
Integrated readers based on multi-RFID device	2	2	
Total number of possible readers per access manager	8	2	16
Mobile access (NFC)	●	●	
Interfaces			
RS485 Partyline	●	●	●
RS232 for peripheral components	2	1	1
Coaxial connector for registration units	2	2	
Digital I/Os			
Number of inputs (monitored)	4 (4)	4 (4) + tamper contact	18 (16) + tamper contact
Number of relay outputs	3	3	16
Hardware options			
Can be upgraded with I/O modules	●		
Passive RS485 interface	●	●	●
Active RS485 interface			●
Software options			
Storage option 2,000/8,000	●	●	●
Storage option 10,000/40,000	●	●	●
Storage option 50,000/100,000	●	●	●
AVISO	●	●	●
CardLink	●	●	●
Data encryption	●	●	●
Number of readers	2/4/8	2	2/4/8/16
Power supply			
PoE		●	
110/230 V AC			●
12/24 V DC	● (12/24 V)	● (24 V)	● (24 V)
Construction/mounting			
	Rail mounting	Surface-mounted housing for indoor installation	Wall housing, rack housing (19")
Certifications			
UL 294 approval	●	●	●
CE	●	●	●
FCC	●	●	●
UL 60950	●	●	●

● Standard



dormakaba access manager 92 00

With its flexible, upgradeable construction, the dormakaba access manager 92 00 offers extensive installation options. It can be installed as an individual device near an entrance, in electric cabinets or centrally with add-on input/output modules. Depending on the system solution, it can manage and control up to twelve doors.

Simply effective:

- Autonomous thanks to its own decision-making logic and local data storage
- Flexible use – for access control, door monitoring as well as for the activation of alarm systems
- Easy integration into existing units
- Easy to configure – commissioning and configuration via web interface



For more information, see here:
www.dormakaba.xxx/xxx

Card readers & peripherals

Access manager

dormakaba access manager 92 30

The dormakaba access manager 92 30 is ideal for single entrances. Quick and easy mounting on any door reduces installation time and costs. Power can be supplied exclusively via PoE, removing the need for other power sources.

Simply effective:

- Minimum wiring work, use of state-of-the-art IT infrastructures
- Efficient installation – easy and fast to carry out without an electrician
- Extensive door controls – supports all common door configurations
- Easy integration into existing units
- Autonomous thanks to its own decision-making logic and local data storage



For more information, see here:
www.dormakaba.xxx/xxx

dormakaba access manager 92 90



A central, effective control unit for complex access control units. The access manager is available as a wall or IT rack version. It is particularly suited to buildings that already have a central wiring infrastructure.

Simply effective:

- Central access control for multiple access points and complex tasks
- Robust wall or rack housing, clear connection concept, connection of up to 16 readers
- Consideration of individual customer requirements (AVISO) and flexible upgrade options
- Quick commissioning and easy configuration via Internet browser



For more information, see here:
www.dormakaba.xxx/xxx

CardLink Update Terminal

dormakaba Terminal 96 05



The dormakaba Terminal 96 05 is a versatile access terminal. The 4" touchscreen not only supports users during operation, but can also display company news or personal information. Thanks to its compact design and simple installation concept, the terminal integrates very easily into modern architectural structures.

Simply effective:

- Supports most RFID readers
- Dustproof and waterproof in accordance with protection class IP 65
- Solid housing and robust glass front (option)
- Freely configurable user interface (e.g. using your own company's corporate design)
- Integration of company-relevant apps
- Network integration and power supply via Power-over-Ethernet (PoE)



For more information, see here:
www.dormakaba.xxx/xxx

Card readers & peripherals

Peripherals

dormakaba desktop reader 91 08



The dormakaba desktop reader 91 08 reads and writes RFID media in the form of cards, smart keys or key fobs that are used for time recording or access control. The desktop reader is connected to a PC via its USB port. The device is automatically detected and installed by Windows.

Simply effective:

- Easy reading and writing of RFID media in accordance with ISO-15693 and ISO-14443A standards
- Equally suitable for cards, smart keys or key fobs
- Unambiguous identification of people
- Transfer of the security key to the system or to the peripheral components



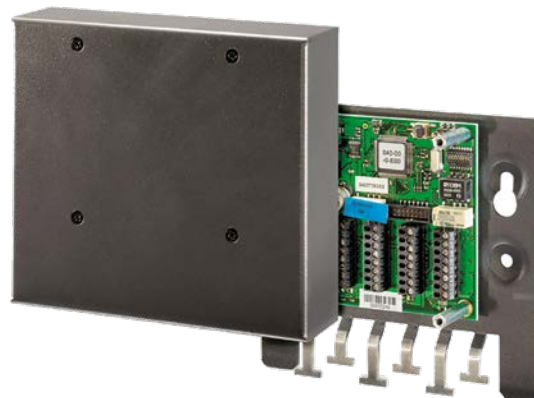
For more information, see here:
www.dormakaba.xxx/xxx

dormakaba Interface 90 10

The dormakaba Interface 90 10 can be connected to the access control unit. Up to two readers with Wiegand interfaces can be connected to a dormakaba access control system. Additional functions such as several digital inputs and relays, for door monitoring and control, for example, are available as standard.

Simply effective:

- Enables the easy integration of third-party hardware into a dormakaba access control system
- Connection of up to two readers, e.g. Wiegand readers, magnetic stripe readers
- Door monitoring and control as an additional function



For more information, see here:
www.dormakaba.xxx/xxx

dormakaba extension modules 90 30 and 90 31

The extension modules 90 30 and 90 31 are used if more digital inputs or relay outputs are needed on the control unit than are available, e.g. for an elevator control unit or for window monitoring. They are mounted by simply plugging them into the control unit. Thanks to its monitored inputs, the 90 31 module offers increased security.

Simply effective:

- Can be used with various control units
- Increased security
- Thanks to monitored inputs (90 31) tamper alarms can be generated
- Easy installation
- Thanks to pluggable modules, the number of I/Os can easily be increased



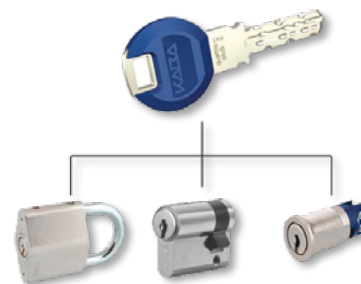
For more information, see here:
www.dormakaba.xxx/xxx

Access Media and Badges

Media – an overview



	Access card	Key fobs	smart key
Multi-application/technology	<ul style="list-style-type: none"> • RFID chip 	<ul style="list-style-type: none"> • RFID chip 	<ul style="list-style-type: none"> • RFID chip
Main applications	<ul style="list-style-type: none"> • Access • Shop floor data collection and time recording • Payment • Follow-me printing and copying 	<ul style="list-style-type: none"> • Access • Shop floor data collection and time recording • Payment • Follow-me printing and copying 	<ul style="list-style-type: none"> • Access • Shop floor data collection and time recording • Payment • Follow-me printing and copying
Unique selling point	<ul style="list-style-type: none"> • Extensive printing options 	<ul style="list-style-type: none"> • Solid and robust 	<ul style="list-style-type: none"> • Checks electronic authorization plus mechanical permutation (EU cylinder) • Color clips for better visibility
Security	<ul style="list-style-type: none"> • Additional combination with PIN code or biometrics possible 	<ul style="list-style-type: none"> • Additional combination with PIN code or biometrics possible 	<ul style="list-style-type: none"> • Additional combination with PIN code or biometrics possible • A mechatronic door can only be opened with the smart key if the RFID chip and key are both authorized at the same time
In the event of loss	<ul style="list-style-type: none"> • Rights can be revoked electronically (meaning no security flaws) 	<ul style="list-style-type: none"> • Rights can be revoked electronically (meaning no security flaws) 	<ul style="list-style-type: none"> • Rights can be revoked electronically (meaning no security flaws)



TouchGo transponder	Smartphone (mobile access)	Mechanical key
<ul style="list-style-type: none"> • RFID chip • Resistive Capacitive Identification 	<ul style="list-style-type: none"> • Via other apps • Near Field Communication • Bluetooth 	<ul style="list-style-type: none"> • Permutation
<ul style="list-style-type: none"> • Mainly in establishments in which access must function quickly and smoothly and be regulated at the same time, such as senior citizens' and nursing homes and hospitals. 	<ul style="list-style-type: none"> • Access • Shop floor data collection and time recording • Payment <p>Other possible applications:</p> <ul style="list-style-type: none"> • After closing time • For nightly maintenance • Temporary access rights 	<ul style="list-style-type: none"> • Simple to hierarchical locking systems • Escape route
<ul style="list-style-type: none"> • Must only be carried, but does not have to be used • Combination of RFID and RCID 	<ul style="list-style-type: none"> • No media transfer • Mobile access can be integrated into a company app 	<ul style="list-style-type: none"> • Can be combined with many other items within a dormakaba locking plan • Pioneering planning method KeyLink
<ul style="list-style-type: none"> • Additional combination with PIN code or biometrics possible 	<ul style="list-style-type: none"> • Additional protection in the form of PIN code or fingerprint 	<ul style="list-style-type: none"> • Patented security system • Copy protection
<ul style="list-style-type: none"> • Rights can be revoked electronically (meaning no security flaws) 	<ul style="list-style-type: none"> • Rights can be revoked electronically (meaning no security flaws) 	<ul style="list-style-type: none"> • In the event of loss, cylinders must be replaced

Access Media and Badges

smart key



Time recording, electronic or mechanical access control – the Kaba smart key is the key that connects everything. The additional electronic identification makes mechanical locking systems more secure and badges superfluous. Its small dimensions means it fits in every pocket.

- Less administration thanks to the management of one medium
- Can be integrated into all dormakaba systems – mechanics, mechatronics or electronics
- Existing key clips can be easily upgraded or retrofitted
- Individual identification of the key clips with color markings that are easy to change



For more information, see here:
www.dormakaba.xxx/xxx

Access cards



RFID identification medium with programmable time and room authorizations in a flat, lightweight shape.



For more information, see here:
www.dormakaba.xxx/xxx

Key fobs

The RFID key fobs are available in different shapes and colors. Practical and easily recognizable on the key ring.



For more information, see here:
www.dormakaba.xxx/xxx

TouchGo media

Practical TouchGo transponder in the form of a key fob: It is carried in your trouser pocket or handbag, and allows you to open the door without having to take out the transponder. Available in black and white, also as a card holder or armband.



For more information, see here:
www.dormakaba.xxx/xxx

Smartphone (mobile access)

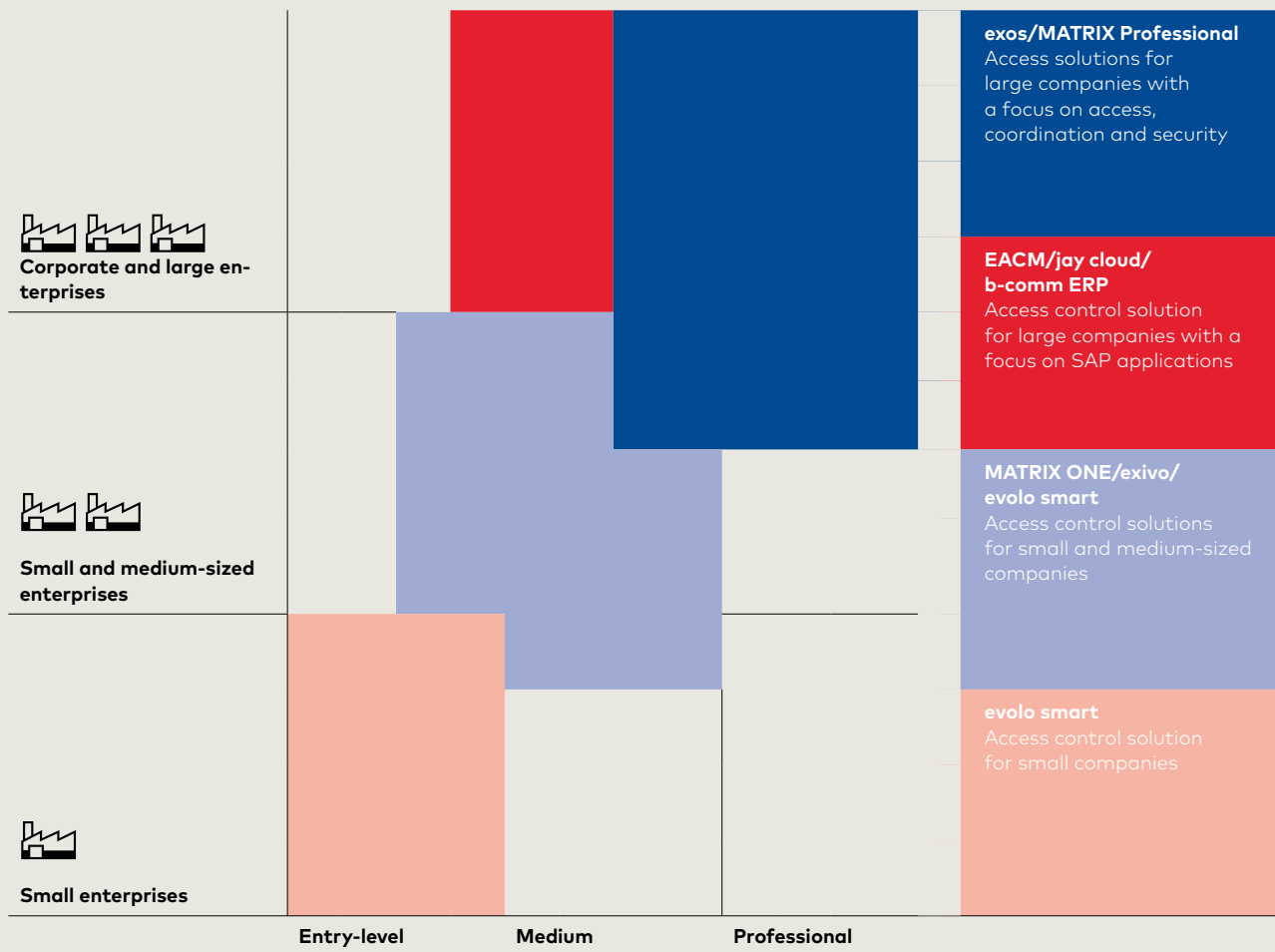
Thanks to mobile access, the smartphone becomes an access medium. Access can be time-limited or not.



For more information, see here:
www.dormakaba.xxx/xxx

Access control solutions

Our access control solutions for different sizes of companies offer more security, streamlined management processes and increased transparency in building management. They are modular in design and can be upgraded as required.



A holistic access control system comprises different hardware and software components and is adapted to your needs.



The effectively available functional scope of the system is dependent on the system context in which it is used. The figure shows an example of a system configuration.

Access control solutions for Corporate

dormakaba exos 9300



dormakaba exos 9300 is a comprehensive modular access management system. The solution coordinates all access rights flexibly and across locations. From simple door control and wirelessly integrated door components to complex interlock control with monitoring. Mechanical doors and locking systems can also be integrated into a holistic solution at any time.

Simply effective:

- Uniform processes and efficient procedures through integration and management of all mechanical, mechatronic and electronic access points in one system
- Extremely flexible because you can use your existing media, access readers and door components
- Integration and connection of intrusion, alarm and video systems
- Reduction of infrastructure and personnel costs thanks to the system's seamless integration into your own IT system and connection to ERP systems
- Easy to expand thanks to the modular, scalable system configuration



For more information, see here:
www.dormakaba.xxx/xxx

Rights management module

Web-based, organization-specific allocation of access rights in accordance with security requirements. Employees, outside companies or suppliers are granted access depending on assignments, projects or contracts. Rights can be planned in advance, to create flexibility and reduce administration costs.

Visitor module

Web-based registration, coordination and monitoring of all visitors. The visitor procedure can be individually configured. Operation is intuitive and is made easier by devices such as a pass and visitor card reader, for example. Short waiting times for the issue and return of ID cards contribute to a professional visitor flow.

Locking system management module

Integration of badges, and mechanical keys, in a single system. This enables an overview and control of who has received a key or badge and where it can be used to gain access.

Outside companies module

Web-based linking of outside company employee access rights in projects. In the event of changes to appointment times, the person responsible can change the access rights of all outside company employees involved with the click of a mouse. This automatically ensures that no external persons retain access after completion of a project.

Badge and media module

Easy programming of access badges as well as quick management of lost, replaced and transferred cards with a single click.

Client module

Independent coordination of individual locations, floors or office groups. Several tenants are able to independently manage their access rights in a central system and therefore maintain full data sovereignty.

Parking space management module

Coordination and management of parking spaces. Users are assigned individual, time-limited parking spaces, so that every parking space is used optimally. The module only grants access to authorized vehicles, and at particular times if required. Unauthorized parking is prevented.

Key deposit module

Management of the issuing of mechanical keys at any time of the day or night. The system automatically records all key pick-ups and returns in real time. This results in verifiable documentation with the complete history, which can be tracked at any time.

Access module

Central or local coordination of employee, supplier and visitor access. These groups obtain their access rights according to their tasks, projects or contracts. For example, basic authorizations can be granted on entry. Rights for specific departments or locations can be granted at a later stage by the relevant responsible persons. Employees receive role-based rights depending on their function and areas of responsibility.

Access control solutions for Corporate

MATRIX Professional



A modular access control system for access control, time recording and time management with the option of integrating emergency escape route management. The system can be scaled to almost every security requirement and size of application, and just as easily used for a simple door control via a locking plan as for the mapping of complex security situations, for example with elevator control, interlock management or high-security conditions.

Simply effective:

- Manages up to 300,000 badges/people
- Ergonomic, browser-based user interface
- Perfectly aligned with customer requirements
- Configurable interfaces with superordinate systems

MATRIX Professional options

Thanks to its modular design and option management, MATRIX Professional can be precisely tailored to individual needs. License management also allows for subsequent upgrades, such as client management for data and peripherals, TMS interfacing for emergency escape route management, integration manager for interfacing with external systems, visitor and outside company management and mobile access.



For more information, see here:
www.dormakaba.xxx/xxx

Access control solutions for SAP

dormakaba EACM



Coordination of access, time recording and media management in the SAP system. Whether for access to the premises, access to buildings or security-critical areas, time recording, media management or additional solutions for shop floor data collection as well as visitor and outside company management: With dormakaba EACM, you can administer and control everything conveniently via SAP in a central system.

Simply effective:

Entry control

- Definition of room zones and access profiles
- Increased security thanks to monitoring and transparent documentation of all movements in security-critical areas

Personnel management

- Easy central and local rights allocation
- Overview of all rights and processes

Device management

- Overview of installed access components and time recording terminals
- Information on system status, each individual door and events

Media management

- Secure and transparent access media management
- Easy handling of media, from issuing new media or replacement badges to returns



For more information, see here:
www.dormakaba.xxx/xxx

Access control solutions for SAP

dormakaba jay cloud



The time and access management solution dormakaba jay cloud coordinates employee access rights according to their position in the company. This enables employee access rights to be administered directly from SAP SuccessFactors Employee Central in real time. The data is thereby saved in the cloud, which means it is always up to date and can be viewed at any time.

Simply effective:

- More security and transparency combined with lower corporate management costs
- Integration of access processes and time recording in the existing management environment of the HR department
- Reduced workload thanks to use of a cloud solution: secure, transparent and scalable at any time
- Data is always up to date
- High degree of flexibility for employees thanks to access regardless of location



For more information, see here:
www.dormakaba.xxx/xxx

Access control solutions for small and medium-sized enterprises



Easy, central access control with the web-based platform, exivo. Critical doors are secured and monitored with electronic and wireless locking components. Using access media ensures the highest levels of flexibility and security, as the access rights of each individual medium can always be changed or revoked. All other doors are secured as usual with keys and mechanical locking systems, which can also be managed with exivo.



For more information, see here:
www.dormakaba.xxx/xxx



The simple, secure and browser-based access solution for small and medium-sized businesses. Within a very short time, the "out-of-the-box" solution can be rolled out and the modern user interface operated intuitively.



For more information, see here:
www.dormakaba.xxx/xxx

Simply effective:

- Easy planning and configuration as well as commissioning on site without special software or servers
- Convenient operation thanks to the intuitive assignment and modification of rights
- Location-independent access via the Internet and control via smartphone, tablet or PC
- Simple billing and full transparency due to consistent, predictable monthly costs
- Easy expansion of the system, retrofittable for any door and other entrances
- Immediate availability of updates thanks to the automatic update function
- Simple service request in the event of a malfunction

Simply effective:

- Quick and easy commissioning
- Controlled and secure management from anywhere – access functionality, door status monitoring and alarm actions, interface to an intrusion detection system, alarm monitor and camera, visitor management
- Support for all modes: offline, Access-on-Card and online
- Reliable granting and denying of access, within seconds online or via remote access
- Choice of operating modes

Access control solutions for small and medium-sized enterprises

dormakaba evolo Manager



The flexible, wire-free complete solution for individual doors through to the management of all access points in one system. Whether inside or outside, for employees, visitors or suppliers – evolo is an access system that is easy to program.

Digital access components are stand-alone and can therefore be installed quickly and easily in almost any door. Existing mechanical locking systems are managed without any problems and can be upgraded with the evolo digital components.



For more information, see here:
www.dormakaba.xxx/xxx

Simply effective:

- Modular design that can be upgraded as desired
- Access rights are granted quickly and easily
- High number of access media can be programmed
- Includes: Set up of up to 512 groups for group authorizations
- Allocation of individual rights with personal time windows
- Authorizations with fixed start and end times, e.g. for visitors
- Total security, even if a means of access is lost
- Practical elevator control – with only one reader in the elevator car, up to 49 floors can be controlled (also applicable for mailboxes)

dormakaba CheckIn



The user-friendly and efficient software for the daily administration and programming of guest cards.

Simply effective:

- User-friendly software for efficient check-in/check-out, available in many languages
- Battery-operated door elements are quick and easy to install
- Additional guest cards can be duplicated easily and quickly
- Guest cards that are taken away by guests automatically lose their authorization, blocking in the event of loss during the guest's stay via a service medium.
- Guest cards can be reused indefinitely
- Seamless integration: The software also allows for the management of mechanical keys



For more information, see here:
www.dormakaba.xxx/xxx

Access control solutions for small businesses and Residential

dormakaba evolo smart



The evolo smart app controls who receives access to your door. No additional hardware is required to program the door components. Access to the door is either via a physical medium (card or key chip) or a smartphone (a so-called virtual key). The virtual key can be bought, managed and issued in the evolo smart app.

Simply effective:

- Fast and convenient programming of access rights via app
- Easy deletion and addition of access media and rights
- Setting up of temporary access authorizations
- For private residences and small companies with up to 50 users
- Access with smartphone, card or key fob
- Smartphone: no issuing of physical media
- Independent: evolo smart works offline



For more information, see here:
www.dormakaba.xxx/xxx

Time & Attendance

dormakaba Terminal 96 00



The ideal entry-level solution for time recording, access control and employee communication in a compact design. The user interface is freely configurable and can, for example, be designed in the company's own look – with the desired colors and icons, background images and customer-specific apps. Thanks to additional options such as CardLink, the range of functions can be extended as required and, for example, offline door components can be easily integrated.

Simply effective:

- Bright 4" touchscreen
- Supports most RFID media
- Dustproof and waterproof in accordance with protection class IP 65
- Solid housing and robust glass front (option)
- Network integration and power supply via Power-over-Ethernet (PoE)
- Easy commissioning thanks to 1-click installation
- Integrated loudspeaker



For more information, see here:
www.dormakaba.xxx/xxx

dormakaba Terminal 97 00



State-of-the art, simple time recording, intelligent access management and targeted employee communication in one solution. The user interface can be configured as desired. If desired, the display can use your own company look, with your own background images, colors, sounds, apps and (multimedia) content. Additional options such as a biometric reader or camera round off the system, which can be flexibly adapted to individual company requirements.

Simply effective:

- Bright 7" touchscreen
- Energy-saving function
- Supports most RFID media
- Power supply options: 230 V AC, 24 V DC and Power-over-Ethernet (PoE)
- Integrated microphone and loudspeaker
- Video functionality
- WLAN and cell phone connection
- Network integration via Ethernet interface
- Easy commissioning thanks to 1-click installation



For more information, see here:
www.dormakaba.xxx/xxx

Time & Attendance

Terminal B-web 93 00

The user-friendly basic time recording terminal offers all the basics you need for easy time recording. A completely glass front with integrated display and capacitive keypad as well as five colored function keys and an operator text on the display help your employees enter their details.

Simply effective:

- Basic time recording terminal
- Completely glass front with wear-resistant keypad
- Supports current RFID standards
- Expansion of functionalities through license extensions
- Supports biometric identification and verification solutions
- Easy network integration via an Ethernet interface
- Standard power supply via Power-over-Ethernet (PoE)
- Fast, secure 1-click installation
- Innovative 1-click analysis and 1-click replacement in conjunction with B-COMM



The special advantage of the B-web 93 00 is that additional functions can easily be added. The broad spectrum of different recording functions has already been broken down into attractive packages:

B-web 93 20

The terminal B-web 93 20 offers particularly good entry-level time recording.

B-web 93 40

A time management terminal for medium-sized companies with the intuitive "Guide by Light" operating concept that guarantees accuracy and security.

B-web 93 60

The time recording terminal for large and complex organizations. Can also be used for access control, project time recording or as a recording terminal in an ERP system.



For more information, see here:
www.dormakaba.xxx/xxx

Terminal B-eco



The Terminal B-eco offers a user-friendly solution with identification via RFID card, badge reader or biometric fingerprint for all data collection tasks and the collection of job data using a CCD barcode reader.

Simply effective, for shop floor data collection:

- Real-time process and job monitoring
- Optimizing of individual work processes
- Easy personnel deployment planning
- Basic data for final costing

Simply effective time recording:

- More efficient payroll accounting, including wages and salaries
- Automated accounting procedures
- Extremely accurate timesheets



For more information, see here:
www.dormakaba.xxx/xxx

Shop floor data collection

Data collection terminal B-web 95 00

The shop floor data collection terminals offer a wide range of data collection functionalities tailored to the needs of companies of different sizes.

Simply effective:

- Ideal functional scope for entry-level shop floor data collection (SFDC)
- Completely glass front with capacitive, wear-resistant keypad
- Supports current RFID standards
- 16 ODC functions that can be parametrized as required with up to 18 input steps
- Supports DHCP/DNS and host communication via HTTPS
- Conforms to protection class IP 54

B-web 95 00

The user-friendly basic terminal B-web 95 00 for individual configuration offers everything you need for simple shop floor data collection processes.

B-web 95 20

Suitable for entry-level shop floor data collection in small companies and stores: It is equipped with 16 function keys for standard functions such as logging into/out of jobs or entering reasons for faults.

B-web 95 40

Suitable for the complex requirements of shop floor data collection. It offers the complete range of functions for allSFDC processes.



For more information, see here:
www.dormakaba.xxx/xxx

Solutions for ERP systems

dormakaba b-comm ERP



dormakaba b-comm ERP – SAP ERP – is a software solution for time recording, shop floor data collection and access control. The solution relieves the higher-level SAP system of critical tasks and jobs. It performs the necessary dialogs with the connected recording devices and autonomously checks the incoming data as certified by SAP.

Simply effective:

- A system for time recording, shop floor data collection and easy access control
- Certified data exchange with SAP
- Customized SAP connection thanks to customer-specific adjustments
- Master data maintenance in SAP only
- Automated system operation
- Web-based interface
- Other connections to the following ERP systems possible: Business ByDesign, Microsoft Dynamics AX, HR Access



For more information, see here:
www.dormakaba.xxx/xxx

dormakaba b-comm for Workday



Certified time and shop floor data collection allows data to be transferred to your ERP systems. The data can be easily collected by various devices such as dormakaba terminals, mobile terminals, PCs and web terminals (PC/web capture).

Simply effective:

- All integration is secure and seamless via standard Workday web services
- Real-time validation thanks to data collection solutions that are always available
- Validation data: employee data, organization data, activity recording
- Transaction data: Time and attendance, shop floor data collection (labor time only), absence management, leave requests (vacation requests)



For more information, see here:
www.dormakaba.xxx/xxx

Interfacing solutions for third-party applications

B-COMM communication software



B-COMM integration platform for fast and efficient administration of terminal systems and the associated functional areas, independent of computer or operating system platforms. The software enables the creation and administration of clients and communication channels, order processing and data exchange with partner applications.



For more information, see here:
www.dormakaba.xxx/xxx

Technology and function principles

Kaba ARIOS

Kaba ARIOS (Advanced RFID Operation Security) is a security concept for access control systems, which uses the RFID technology MIFARE.

Kaba ARIOS is the only system worldwide that ensures process reliability throughout the entire supply chain.



For more information, see here:
www.dormakaba.xxx/xxx

Technology and function principles

dormakaba TouchGo



The electronic locking system with the TouchGo function means no more searching for keys. A simple touch of the door handle is all it takes for the lock to recognize whether the user is authorized to enter. It doesn't matter whether the TouchGo user medium is in your pocket, jacket or belt.

Simply effective:

- Hands-free – your hand is the key
- Increased security and privacy – authorized access only
- Access authorization verification using RCID technology developed by dormakaba – simply touching the metal-receiving electrode – e.g. the door handle – is sufficient
- Transponder available as key fob, card holder or armband



For more information, see here:
www.dormakaba.xxx/xxx

CardLink/AoC



The users receive their access rights at update readers, which are installed at central locations, e.g. at the staff entrance, in the elevator area or in the canteen. This process helps keep operating costs low.



For more information, see here:
www.dormakaba.xxx/xxx

Biometric fingerprint systems

Pre-programmed time recording terminals and locking components with biometrics, either as the sole identification characteristic or as a supplement to a badge. The fingerprint uniquely identifies the person and is legally binding. This is a quick, practical and easy way to ensure unambiguous user identification. Further biometric technologies (e.g. iris recognition) can be easily integrated via existing interfaces.

Simply effective:

- Unambiguous identification of people
 - Choose between identification (biometrics instead of badge) or verification (biometrics as a supplement to the badge)
- Simple, secure, easy to operate
- Biometric characteristics cannot be forgotten, lost, stolen or passed on to third parties
- Legal certainty – who registered when and where?
- Data protection fully guaranteed thanks to fingerprints that cannot be reconstructed



For more information, see here:
www.dormakaba.xxx/xxx

Technology and function principles

Mobile access



With mobile access, doors with and without a network connection are integrated into the access solution – simply, efficiently and securely. Access rights can be easily and flexibly transferred to employees, guests or service providers, to their smartphone, for example. This simplifies processes, because the issuing and returning of access media is no longer necessary. In addition to security, user comfort plays a major role: Access rights for isolated rooms or infrastructure facilities are simply assigned only when they are needed on site. For example, an assembling technician simply requests the required access rights by phone call or app and receives them immediately on their smartphone.

Simply effective:

- Use of smartphone as means of access
- Can be combined with dormakaba online and stand-alone components
- Access rights are transmitted to the smartphone via a secure platform
- Door status and access events are transmitted to the dormakaba access solution



For more information, see here:
www.dormakaba.xxx/xxx

Wireless



The wireless function connects the online and stand-alone systems and networks the digital access components.

The wireless access components are conveniently controlled and maintained from the desk: There is no need for on-site programming. You have full access to the door components from the computer.

Simply effective:

- Very easy to use thanks to programming from the desk
- Increased security for out-of-the-way doors: Thanks to immediate data transfer (e.g. withdrawal of rights in the event of loss of badge), there are no gaps in security
- Information about door status and access events (time/place/medium)
- Secure and cost-effective expansion of all dormakaba access solutions with the wireless function
- Fast, efficient planning and implementation of maintenance and updates
- Reduced administration and time requirements



For more information, see here:
www.dormakaba.xxx/xxx



Interior Glass Systems

Glass assemblies and doors lend architecture projects a transparent elegance. No other material can deliver such appealing insights and beautiful views, such exciting new perspectives and so much light in the way that glass does. Within interior design, glass opens up new dimensions and creates smooth transitions between different functional areas. Our fittings and glass systems add to this fascinating material to create elegant toughened glass doors, systems and sliding walls so you can design creative spaces and architectural highlights.



Interior Glass Systems

Good architecture characterizes the connection between outdoors and indoors.

Combined with intelligently designed fittings, glass is a generous material offering greater transparency in interior design: stable, transparent and flexible. Different functional areas can be reconnected or cleverly separated, with mechanical and digital access control. Perfectly tailored profiles and modules improve the ambience and acoustics of the room. Movability is built in: sliding walls adapt to your requirements as the day progresses. Glass simply provides rooms with more space.





Manual sliding door systems

For home, working and living areas without thresholds: Doors in the track-rail system, single-point or with clamping fittings.



Manual single-action and double-action door systems

Invisibly integrated or in coordinated designs: a variety of glass fittings for single and double-leaf interior doors.



Fittings for toughened glass assemblies

Patch fittings and single-point systems for creatively designed toughened glass assemblies



Access and room system

Flexible profile system for shaping space in the room with integrated swing and sliding doors.



Horizontal sliding walls

Great transparency reduces visual separation. Thresholdfree, separated or closed glass front for public areas, service areas, restaurants or stores.



Handles and pulls for glass door systems

Whether recessed pull grips, pull handles or lever handles: functional accents made from quality materials, for every type of glass door.

Manual sliding door systems

Manual sliding door systems – an overview

Applications and characteristics		MUTO M 60	MUTO L 80	MUTO Premium XL 80/150
Suspended sliding door		●	●	●
Integrated/concealed carriage		●	●	●
1-leaf sliding door		●	●	●
2-leaf, sliding doors moving in opposite directions			●	●
Integrated locking device			●	●
Status indicator			●	●
Suspended ceilings			●	●
Self-closing				
Syncro version			●	●
Telescopic function (synchronous leaf running)				
End-position engage cushioning		●	●	●
Mounting on wall		●	●	●
Mounting on wall; variant with greater glass-wall distance to bridge existing door frames + direct track rail wall mounting		●	●	●
Mounting on ceiling		●	●	●
Mounting on glass			●	●
Secure use of LSG		●	●	●
System integration of fixed side panels		●	●	●
Wooden sliding panels available		●	●	●
Curved units				
Panel connection without glass preparation ¹⁾		●	●	●
Max. sliding panel weight [kg]		60	80	80/150
Min. sliding panel width (mm)	Without DORMOTION	600 ³⁾ 6)	660 ³⁾	660 ³⁾
	With DORMOTION	600 ³⁾ 6)	660	810/1020 ³⁾
Max. sliding panel width (mm)		1300	1500 (max. 2000) ⁷⁾	1500 (max. 2500) ⁷⁾
Max. sliding panel height (mm)		2500	3000	3000
Glass thicknesses (mm), sliding panel		8–12	8–13.5	8–13.5
Glass type		TSG/LSG ⁴⁾ 5)	TSG/LSG ⁴⁾ 5)	TSG/LSG ⁴⁾ 5)
Wood thickness (mm), sliding panel		28–50	28–50	28–50
Glass thicknesses (mm), integrated side panels		8–13.5	8–13.5	8–13.5

● Standard ○ Optional

1) Glass preparation required only for individual handle solutions.

2) 120 kg for glass or wooden panels with 2 carriages. 150 kg for glass panels with 3 carriages.

3) For optimum running performance, we recommend a side ratio of 1:2 to 1:3

4) LSG with LSG accessories set

5) LSG from 2 x TSG

	MUTO Premium Self-Closing 120	MUTO Premium Telescopic 80	MANET Compact	MANET Concept	RSP 80	RS 120
	●	●	●	●	●	●
	●	●				●
	●	● (2 leaves, synchronous running)	●	●	●	●
	●	● (2 + 2 leaves, synchronous running)	●	●	●	●
	●	●				
	●	●				
	●	●				
	●	●				●
	●	●				
	●	●	●	●	●	●
	●	●	●	●	○	
	●	●		●		●
	●	●	●	●		
	●	●		●		
	●	●	●	●		●
	●	●		●	●	●
	●	●				●
	120	2 x 80	100	120	80	120/150
	660 ³⁾	From 600 ⁹⁾	500 ³⁾	500 ³⁾	500 ³⁾	500 ³⁾
	850 ³⁾					
	1500 ⁸⁾	From 790 ⁹⁾	1200 ⁷⁾	1500 ⁷⁾	1200 ⁷⁾	1500 ⁷⁾
	3000	3000	2500	3000	2500	3000
	8-13.5	8-13.5	8, 10, 12	8-17.5	8, 10	8, 10, 12
	TSG/LSG ^{4) 5)}	TSG/LSG ^{4) 5)}	TSG	TSG/LSG	TSG	TSG
	28-50	28-50		20-40	25-40	26-38
	8-13.5	8-13.5	10, 12	10-17.5		

6) By consultation: Without DORMOTION possible from 400 mm, with DORMOTION possible from 550 mm

7) Our Applications Engineering team can provide other glass-panel widths on request.

Glass volumes may vary due to the following: mounting type, glass tolerances, general usage

8) Max. travel path 1450 mm

9) Depending on the unit specifications. More detailed information is available from our Applications Engineering team on request.

Manual sliding door systems

MUTO

Be it glass or wood – MUTO creates elegant transitions from one room to another. MUTO represents quality technology, subtly concealed in the compact track rail, and consistently quiet running behavior.

MUTO offers many functions that make an elegant sliding door system convenient to use: for example, a self-closing function that doesn't require power, the integrated locking device or the status indicator that enables door monitoring within a building management system.



Simply effective:

- Glass and wooden solutions, lightweight and heavy-duty doors (60–150 kg)
- Simple mounting and adjustment thanks to the removable cover profile
- Individual design in white, aluminum, stainless steel, color options/anodized
- Also available in synchronous and telescopic variants
- For single and double leaf doors



For more information, see here:
www.dormakaba.xxx/xxx



Manual sliding door systems

MANET

An interplay of transparency and light, form and color, weightlessness and technology. Guaranteed to catch the eye: The visible technology typical of MANET in refined contrast to the large glass surfaces. Quality materials and sophisticated technology highlight the aesthetics of the door.



Simply effective:

- Flexible, frameless point holder system in stainless steel
- Single and double-leaf design available
- No floor track/barrier-free
- Suitable for glass or wooden sliding and swing doors
- Simple, custom-fit mounting of glass elements



For more information, see here:
www.dormakaba.xxx/xxx

RSP 80



With very little clearance between glass and wall, the RSP 80 sliding door system is an outstanding solution for space-saving ways to seal off rooms indoors. The smooth-running system with the graceful-looking satin-matt fitting is an elegant way to link different living spaces. The proven roller technology offers smooth, quiet running.



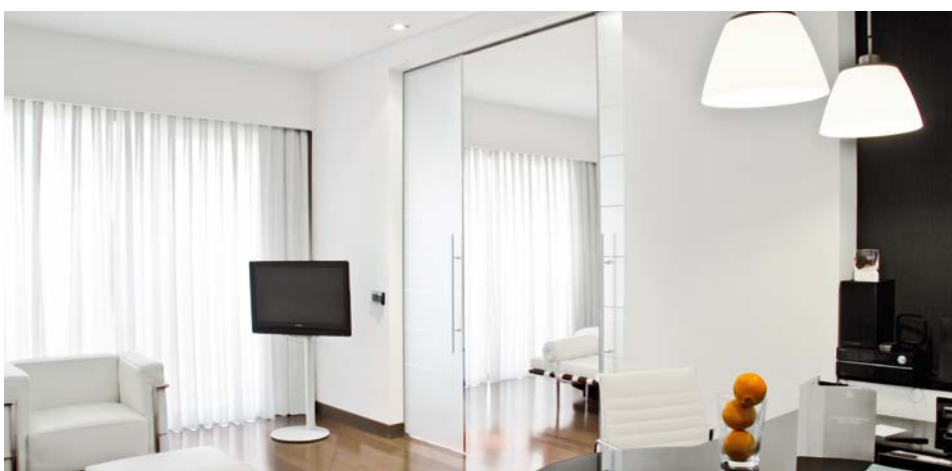
Simply effective:

- Track rail with plastic support is extremely quiet
- Barrier-free and smooth-running
- Suitable for wet rooms
- High level of corrosion resistance



For more information, see here:
www.dormakaba.xxx/xxx

RS 120



The carriages of the RS 120 sliding door system quietly guide the panels through the lightweight yet stable track rails. Special draw-cable technology enables synchronous opening of double-leaf doors moving in opposite directions. As only one panel needs to be moved, maximum user convenience is guaranteed with maximum passage widths.



Simply effective:

- Quiet carriages and stable track rails
- Corrosion-resistant and extremely resilient
- Simple locking in the end positions
- Direct fastening to ceiling or wall
- Individual installation lengths possible



For more information, see here:
www.dormakaba.xxx/xxx

Manual single-action and double-action door systems

Fittings for single-action and double-action doors – an overview

Features	STUDIO Rondo	STUDIO Classic	STUDIO Gala 2.0	STUDIO Medio	STUDIO Arcos
Max. door leaf weight (kg) (differs depending on hinge)	45, 50, 60	45, 50, 60	45, 50, 60	*	45, 50, 60
max. Door leaf width (mm)	1000 ¹⁾	1000 ¹⁾	1000 ¹⁾	*	1000 ¹⁾
max. door leaf height (mm)	Door frames standard ¹⁾	Door frames standard ¹⁾	Door frames standard ¹⁾	Door frames standard ¹⁾	Door frames standard ¹⁾
Glass type	TSG	TSG	TSG	TSG	TSG
Glass thicknesses (mm)	8/10	8/10	8/10	8/10	8/10
Rebate depth, standard (mm)	24, 40	24	24	*	24, 40
Lock types					
Low-noise whisper functionality Whisper latch = latch head partially plastic-sheathed/ damped latch motions	●	●	●		●
Adjustable follower +/- 1° for OFFICE Adjustable follower +1.5/-1° for Studio** To avoid "sagging lever handle"	●	●	●		●
Non-locking	●	●	●	●	●
Non-locking, front lever handle (adjustable follower not available for this version)	●	●	●		●
Prepared for profile cylinder (PC)	●	●	●		●
External testing according to DIN EN 12209	●	●	●		●
Prepared for KABA	●	●			●
Warded lever lock with nightlatch function	●	●	●		●
Warded lever lock without nightlatch function					
Bathroom lock function	●	●			●
Strike box for double-leaf door	●	●		●	●
Lock designs					
With follower for door lever handles without roses	●	●	●	●	●
For door lever handles with roses	●	●			●
Hinge designs					
For frame pivots	●	●	●		●
With frame pivot for aluminum alloy frame	●				
With frame pivot for wooden frame	●	●	●		●
With frame pivot for steel frame	●	●	●		●
For project doors					
For fastening to glass side panels	●				
Double-action/single-action door	SA	SA	SA	SA	SA
Door closer/self-closing	○	○	○	○	○

● Standard ○ Optional

1) Our Applications Engineering team can provide other glass-panel widths, glass heights, glass thicknesses and rebate depths on request.
Glass volumes may vary due to the following: mounting type, glass tolerances, general usage.

2) LSG possible in special design with MUNDUS Premium fittings

	OFFICE Junior	OFFICE Classic	OFFICE Mundus	OFFICE Arcos	TENSOR	VISUR	RP corner fittings
	55, 70, 80	55, 70, 80	55, 70, 80	55, 70, 80	65	85	80/110
	1000, 1200 ¹⁾	1000, 1200 ¹⁾	1000, 1200 ¹⁾	1000, 1200 ¹⁾	1000 ¹⁾	1100 ¹⁾	1100, 1250 ¹⁾
	Door frames standard ¹⁾	Door frames standard ¹⁾	Door frames standard ¹⁾	Door frames standard ¹⁾	2500 ¹⁾	2500 ¹⁾	2500
	TSG ¹⁾	TSG	TSG	TSG	TSG	TSG	TSG ²⁾
	8/10	8/10	8/10	8/10	8/10/12	10/12	8/10/12/13.5
	24, 40 ¹⁾	24, 40	24, 40	24, 40			
	●	●	●	●			
	●	●	●	●			
	●	●	●	●			
	●	●	●	●			
	●	●	●	●			
	●	●	●	●			
	●	●	●	●			
	●	●	●	●			
	●	●	●	●			
	●	●	●	●			
	●	●	●	●			
	●	●	●	●	●	●	●
	●	●	●	●	●		
	SA	SA	SA	SA	DA	DA	SA/DA
	○	○	○	○	●	●	●

* Dependent on the door hinge used
 ** For all lock designs except for "non-locking locks - front lever handle."
 *** Can be used as double-action door only with FDC

Manual single-action and double-action door systems

STUDIO Horizontal fittings for single-action doors

With their slim shape and elegant design, STUDIO locks perfectly accentuate the special character and transparency of glass doors. Choose from a range of closing variants (non-locking, warded lever lock, profile cylinder) and lever handle positions.

Simply effective:

- High level of security and quality due to premium and robust lock technology
- Simple and flexible mounting
- Quiet closure thanks to sound-absorbing materials
- Variety of colors and locks for high level of customization



For more information, see here:
www.dormakaba.xxx/xxx



01



02



03



04



05

- 01 STUDIO Rondo – rounded design
 02 STUDIO Classic – linear design
 03 STUDIO Gala 2.0 – dynamic design
 04 STUDIO Medio – filigree design
 05 STUDIO Arcos – curved design

OFFICE Vertical fittings for single-action doors

OFFICE locks are highly suited to doors in heavy-traffic areas. The especially sturdy lock case withstands everyday stresses. It comes on rather strong; literally.

Simply effective:

- Reliable in heavy-traffic areas
- Premium materials for a long service life
- Low-noise whisper functionality
- Adjustable lever handle positions
- Successfully tested by a neutral testing institute with 500,000 movement cycles for the latch function and 100,000 movement cycles of the bolt
- According to EN 12209



For more information, see here:
www.dormakaba.xxx/xxx



01



02



03



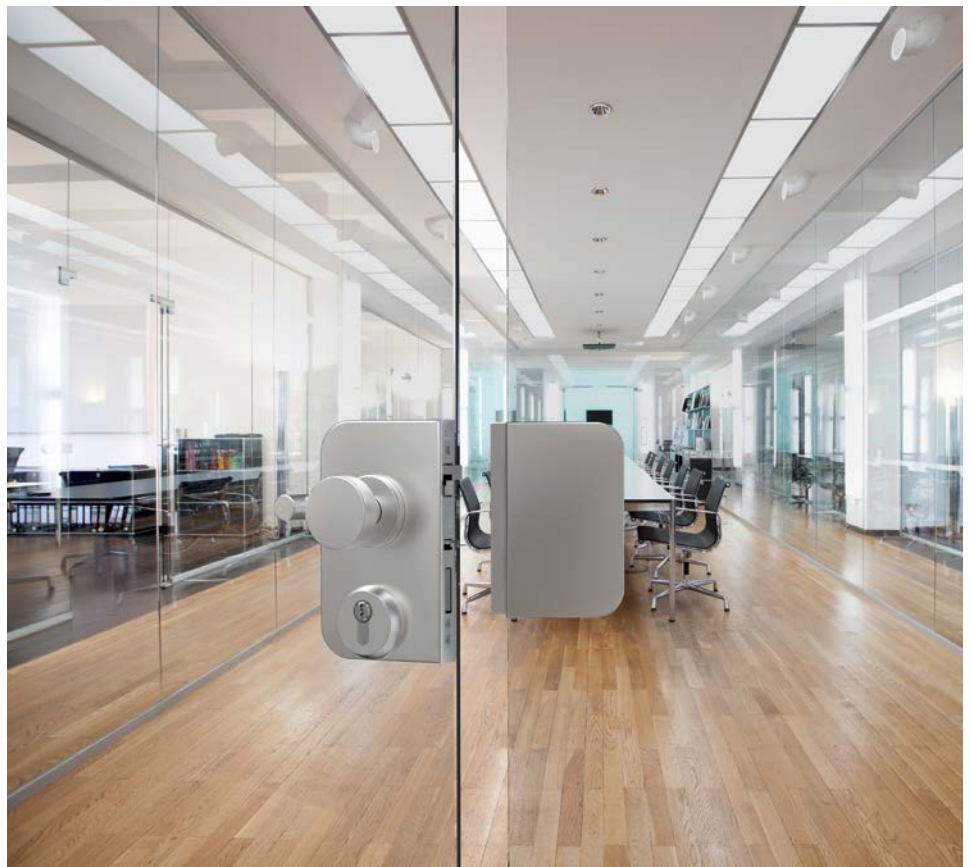
04

- 01 OFFICE Junior
- 02 OFFICE Classic
- 03 OFFICE Mundus
- 04 OFFICE Arcos

Manual single-action and double-action door systems

OFFICE Junior SVP 5000

The OFFICE Junior SVP 5000 is the reliable door lock with self-locking emergency escape design. A beautiful and secure unit for emergency exit doors made of glass – with inner values and solid mechanics. Thus even an all-glass unit provides all-round security for buildings and rooms.



Simply effective:

- A compact lock for both security and convenience
- Mechanical sequential control for self-locking – doesn't rely on power
- Compliance with the insurance specifications for panic locks
- Panic function tested and certified, standard-compliant according to DIN EN 179



For more information, see here:
www.dormakaba.xxx/xxx

TENSOR

All-glass doors with the TENSOR double-action door fitting not only bring transparency and comfort to your rooms – they are also particularly convenient: The doors are easy to open in both directions and always find their closed position again.



Simply effective:

- Integrated self-closing function for secure closing
- For renovation work or new projects: flexible mounting to masonry, door frame, glass
- No need for a door frame
- EASY STOP component mounted direct to the sheet of glass to hold the glass double-action door securely – avoiding tripping hazards on the ground
- Simple and precise zero-position adjustment



For more information, see here:
www.dormakaba.xxx/xxx

Manual single-action and double-action door systems

VISUR

Glass double-action doors with no visible fittings? It has to be VISUR. This patented system holds glass double-action doors completely free from the function elements. It is not the fitting that's in the foreground, but the absolute transparency. So even small spaces become big – a big win for internal architecture.



Simply effective:

- High transparency
- Independent choice of colors and materials for rooms
- Sophisticated technology for high resilience
- No need for a door frame



For more information, see here:
www.dormakaba.xxx/xxx

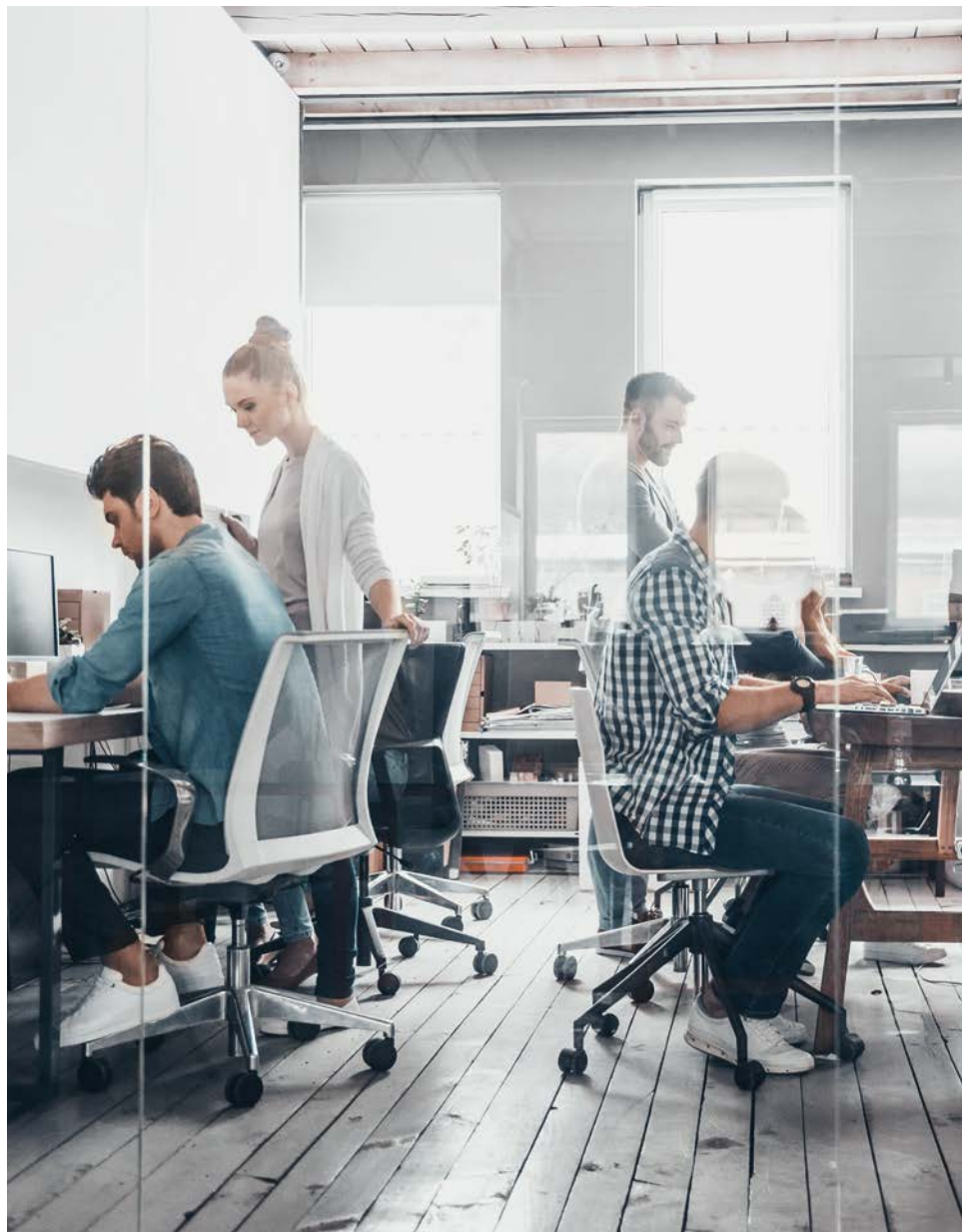
RP

The RP all-glass double-action door system works using a frame profile in which the RTS frame door closer is almost invisibly integrated. A corner fitting connects the door to the door closer.



Simply effective:

- Automatic swing back to zero position
- Special damping provides impact protection in the event of forceful opening
- 90° opening angle stop



For more information, see here:
www.dormakaba.xxx/xxx

Fittings for toughened glass assemblies

Fittings for toughened glass assemblies – an overview

Applications and characteristics	MUNDUS		Corner fittings		BEYOND
	Comfort/Premium		UNIVERSAL/Arcos		
For outdoor units	●	●	●	●	
For indoor units	●	●	●	●	●
For standard all-glass unit types	●	●	●	●	●
For custom units with corner fittings, fin fittings, etc.			●		
For double-action doors	●	●	●	●	●
For single-action doors	●	●	●	●	●
Glass thicknesses (mm) (the following generally applies: glass thickness tolerance +/- 0.5 mm representable)	8-12	8-22	8, 10, 12 ⁶⁾	8, 10, 12	10, 12
Glass thicknesses (mm) with UNIVERSAL with 15 mm pivot point			8, 10	8, 10	
Door leaf weight (max. kg)	150	200	110 ²⁾⁵⁾	110 ²⁾⁵⁾	80
Door leaf weight (max. kg) with UNIVER- SAL with 15 mm pivot point			80		
max. Door leaf width (mm)	1100	1300	1100 ²⁾⁵⁾	1100 ²⁾⁵⁾	1000/1200 ⁴⁾
max. door leaf height (mm)	3000 ¹⁾²⁾⁵⁾		3000 ¹⁾²⁾⁵⁾	3000 ¹⁾²⁾⁵⁾	2200/3000 ⁴⁾⁵⁾
Glass type	TSG	TSG/LSG ³⁾	TSG	TSG	TSG
Double-action/single-action door	SA/DA	SA/DA	SA/DA	SA/DA	SA/DA
Materials and surfaces					
Aluminum alloy, untreated, AA raw (100)					
Aluminum alloy, silver EV1 anodized (similar anodized I EV1/anodized II C O) (101)			●		
Aluminum alloy, silver EV 1 deco. anodized (compatible with surface 150)					●
Aluminum alloy, similar Niro satined anodized (113, 107)					● (107)
Aluminum alloy, silver anodized (silver N 600 ST) (compatible with surface 114) (150)	●	●		●	
Special anodically oxidized shades, anodized special color (199)		●	●	●	
Aluminum alloy, powder-coated traffic white (similar RAL 9016) (300)					
Aluminum alloy, powder-coated white (white P 100 SG) (350, RAL 9016)	●	●	●		
Special coatings, powder-coated special color (399)			●	●	
Brass, high-gloss chrome plate (501)			●		
Brass, clear wet painted (502)					
Brass, polished (503)			●		
Stainless steel, Niro satined (Niro S 700 ST) (700)			●	●	
Stainless steel, Niro polished (Niro S 700 HG) (701)			●	●	
Niro satined (Niro S 700 ST) (for MUNDUS) (750)	●	●			
Niro polished (Niro S 700 HG) (for MUNDUS) (751)	●	●			

● Standard ○ Optional * Only for double-action doors with top and bottom door rails, incl. steel door lever

1) For door leaf heights up to 2500 mm, for door leaf heights from 2500 mm, the following specifications must be taken into account:

- Glass thickness ≥ 10 mm
- Use of a handle bar with at least 3 fastening points and a minimum height of 2/3 of the door leaf height

2) Use of door closers: Doors ≤ 1100 mm must have type EN 3 door closers (with or without backcheck) and doors ≥ 1100 mm must have larger door closers (e.g. EN 4, 5 or 6) with or without backcheck.

EA	TP/TA	SG	MANET Compact	MANET Concept	Wall connection profiles	MR 22/ MR 28
●	●	●		○	●	
●	●	●	●	●	●	●
●	●	●	●	●	●	
	○			●		
	●	○	●	●	○	
●	●	○	○	○		
8, 10, 12	8, 10, 10.76, 12, 12.76, 13.5, 15, 17, 19, 21	8, 10, 12	10, 12	10-15.5	8, 10, 12, 12.7, 13.5, 15, 17, 19	6, 8, 10
80/110 ⁴⁾	150*		80	100	45 kg/m	
1000/1100 ⁴⁾	1400*		1200	1200		
3000 ^{1) 2)}	3500 ^{1) 2) 5)/4000⁴⁾}		2500 ^{1) 2) 5)}	3000 ⁵⁾	3000 ^{1) 2) 5)}	2500/2800 ^{1) 2) 5)}
TSG	TSG/LSG ³⁾	TSG	TSG	TSG/LSG ³⁾	TSG/LSG ³⁾	TSG
SA	SA/DA	SA/DA	SA/DA	SA/DA		
	●				●	
●	●	●			●	●
● (107)		●			●	●
●	●					
●		●			●	
●	●	●				
●						
●	●		●	●	●	
	●				●	

3) LSG from 2 x TSG

4) Max. leaf weight depends on the product combination

5) Our Applications Engineering team can provide other glass-leaf heights on request.

6) Under certain conditions glass thickness of 15+19 mm as well

Glass volumes may vary due to the following: mounting type, glass tolerances, general usage

Fittings for toughened glass assemblies

MUNDUS

MUNDUS fittings set themselves apart through their elegant shape with straight edges and rounded corners, the quality materials and attentive workmanship. The fittings manage without any visible connecting elements between the basic frame and the caps as a design element. Their multidimensional adjustment capability means MUNDUS fittings are simply the right fit. They enable infinite adaptation of the vertical clearance and a perfect fit with regard to the axis of rotation and zero position.

Simply effective:

- Clear design, no visible screw fixings
- Wide range of surfaces, colors and materials
- Quick installation. Easy readjustment of the installed unit.
- Equipped for the correct glass thickness: adapts to different glass thicknesses without the need to change gaskets
- Use of laminated safety glass with the proven dormakaba adhesive technology for high quality and security demands
- Easy to retrofit and integrate in existing units



For more information, see here:
www.dormakaba.xxx/xxx

UNIVERSAL/UNIVERSAL Motion

All-glass units adapt now to precise requirements. UNIVERSAL offers a whole host of different fixed parts for this purpose, with fin fittings and corner fittings at any required angle. This enables double-action and single-action doors in a single and double-leaf design. This range of corner fittings has a wide variety of basic forms and variants to achieve virtually any conceivable all-glass design. UNIVERSAL, the name says it all: an all-rounder.

The little big revolution in doors: UNIVERSAL Motion – the compact corner fitting with self-closing function – moves even heavy-duty glass with ease, hydraulic, no power feed and no visible mechanics. The glass door is glued between the steel plates. No ground preparation is required.



Simply effective:

- Lock range with uniform design, with fitting variants and strike boxes
- Simple glass preparation
- Versatile mounting
- Variable pivot point

UNIVERSAL Motion



Simply effective:

- Compact technology
- Reliable function
- Easy installation



For more information, see here:
www.dormakaba.xxx/xxx
www.dormakaba.xxx/xxx

Fittings for toughened glass assemblies

UNIVERSAL Arcos

More variants for more designs: UNIVERSAL Arcos corner and connection fittings are suitable for overpanels and side panels as well as fin fittings for especially large units. The curved design creates stability without appearing too heavy. The innovative clip technology of the fittings enables virtually invisible fastening of the caps to the basic frame. 24 possible standard variants alone offer flexibility. A clear solution for every requirement.



Simply effective:

- Simple glass preparation, secure fastening
- Versatile mounting
- Variable pivot point
- No trapping



For more information, see here:
www.dormakaba.xxx/xxx

BEYOND

Secure swing doors with patented system: With BEYOND, the pivot point is extremely close to the edge of the glass. The short-rod solution makes the product especially lightweight. And the version with a continuous pivot rod has a constant minimum clearance during rotational movement to virtually eliminate the danger of crushing.



Simply effective:

- Safety through no trapping (continuous profile)
- No need for a door frame
- Small fittings for high transparency



For more information, see here:
www.dormakaba.xxx/xxx

Fittings for toughened glass assemblies

EA patch fittings

EA corner fittings set themselves apart with their small size and the slimline design of their hinge parts. The range includes various models with a variety of surfaces and enables technically and visually coordinated single-action glass doors of all types.



Simply effective:

- Various surfaces and colors
- 180° door opening
- Long service life



For more information, see here:
www.dormakaba.xxx/xxx

TP/TA door rails

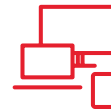


The TP/TA door and side panels effectively seal the all-glass units underneath and protect the bottom glass edges from breakage due to kicks and impacts. As they give the unit extra stability, they also enable the integration of heavy, wide doors.



Simply effective:

- Stability and glass protection
- Tailored to dormakaba corner fittings
- Additional security through integrated locks



For more information, see here:
www.dormakaba.xxx/xxx

SG center and corner locks



The range of locks for all-glass units and glass doors reduce technology, aesthetics and economy to a common denominator. The locks are designed to enable the use of simple, quick-to-produce glass cutouts and drill holes. Design measures ensure large clamping plates with optimum clamping.

Simply effective:

- Simple glass preparation
- Large clamping plate for secure fastening
- Quality materials and solid designs
- Tailored locks for all-glass units and glass doors



For more information, see here:
www.dormakaba.xxx/xxx

Fittings for toughened glass assemblies

MANET

MANET sets itself apart with its unmistakable design: point fixed in stainless steel. This elegant solution highlights the generously transparent architecture and sets store by high flexibility. So doors, conventional all-glass units and even special formats can be achieved using highly special architecture.



Simply effective:

- High flexibility and great variety
- No need for a door frame
- Uniform stainless steel design for sliding and swing doors



For more information, see here:
www.dormakaba.xxx/xxx

Wall connection profiles

The profile is available in aluminum, brass or stainless steel with a variety of surfaces to form a clean, elegant border for all-glass designs at the wall, ceiling and ground. It provides a secure hold for side panels or overpanels.



Simply effective:

- Secure hold through supporting profile
- Elegant border in aluminum or stainless steel
- Surface: Anodized and RAL shades as well as stainless steel



For more information, see here:
www.dormakaba.xxx/xxx

Fittings for toughened glass assemblies

MR 22/MR 28

MR 22 and MR 28 form an all-round frame for all-glass units with fixing to the wall, ceiling and ground. The graceful and elegant frame solutions are suitable for both indoors and outdoors.

With a visible profile width of just 22 or 28 mm, nothing is taken away from the effect of the glass surfaces – allowing an impressive display of light and transparency.



Simply effective:

- Filigree solutions for indoors and outdoors
- Disassemble and reassemble without any problems
- Use the system's own rung profiles for even more planning freedom



For more information, see here:
www.dormakaba.xxx/xxx



Access and room system

UNIQUIN

The contemporary design impresses with a variety of harmonized functional elements with clear lines and flexibility. Partition walls, sliding doors and swing doors are no longer individual pieces. UNIQUIN is the contemporary system that adapts to any room. Flush-mounted profiles, fittings and closing systems complement each other to form a uniform design. The aluminum has a special powder coating for an elegant surface that is also resistant. Use precisely the dividing elements that you need: in glass, wood or other materials.



Simply effective:

- Fixed parts: in glass, wood and other materials up to 19 mm thick
- Integrated sliding doors and swing doors
- Access control systems create security
- Possible integration of electrical/electronic modules supports functional utilization of space
- Decoupled glass slot reduces sound transmission
- Individually designed acoustics modules ensure a pleasant ambient sound



For more information, see here:
www.dormakaba.xxx/xxx

Horizontal sliding walls

Horizontal sliding walls – an overview

Applications and characteristics	HSW EASY Safe	FSW EASY Safe	HSW-GP	HSW-R
Store fronts	●	●	○	●
Store fronts with climate seal function				○
Internal partition	●	●	●	○
Glass thicknesses (mm) TSG	10/12/13/ 15/17/19	10/12/13/ 15/17/19	10/12	8–22 ¹⁾
Glass thicknesses (mm) LSG (from TSG)	10.8/12.8/13.5/ 15/17/19	10.8/12.8/13.5/ 15/17/19	10.8/12.8/13.5	
Unit height (max. mm)	4000	3000	3000	3000
Panel width (max. mm)	1250	1100	1200	1100
Panel weight* (max. kg)	150	80	100	100
Movable panel				
– Pivot end panel, one-sided opening	●	●	●	●
– Pivot end panel, two-sided opening	●	●	●	●
– Single-action end panel	●	●		●
– Pivot/sliding panel	●	●		●
– Double action-sliding panel	●	●		●
– Invisibly integrated ITS 96 door closer	●			●

● Standard ○ Optional * Weight dependent on panel equipment

1) Can also be used for insulating glass

Horizontal sliding walls

HSW EASY Safe

The HSW EASY Safe horizontal glass sliding wall represents high transparency and secure application. Be it straight, angled or curved – it meets individual requirements and is suitable for both modernization projects and new builds. The new door rail enables effortless and time-saving installation, with the proven Clamp-&-Glue technology holding even laminated safety glass.



Simply effective:

- Free glass edges for high transparency
- User-friendly panel operation for flexible utilization of space
- Simple installation even without a carrier profile
- Secure hold through cementing when using laminated safety glass



For more information, see here:
www.dormakaba.xxx/xxx

Horizontal sliding walls

FSW EASY Safe

Transparent, compact and space-saving: the FSW EASY Safe folding sliding wall is ideal for linear unit progression. Its simple, space-saving folding technology requires no separate parking design. The coupling of either two or four panels, and with FSW EASY Safe-C up to six panels, allows glass fronts to be expanded as required – for abundant transparency and creative scope. FSW EASY Safe is therefore a new alternative to an HSW unit, similar in appearance and technology, yet with a subtle rail for full integration in any room. The compact technology impresses with its optional, high-security laminated safety glass



Simply effective:

- Quick and easy installation
- Secure and easy to use
- Greater planning freedom and security
- Increased security through the use of laminated safety glass (LSG)
- Clear color system providing visible status display for the top lock
- No separate parking design required



For more information, see here:
www.dormakaba.xxx/xxx

HSW-GP

The HSW-GP is characterized by the point fixing of the glass combined with the conventional track rail profile. The design – underlined by quality stainless steel and point holders flush with the glass – is ideal for contemporary architecture.



Simply effective:

- Flexible application for glass fronts
- Panel fittings in the MANET design
- Abundant transparency and an elegant look



For more information, see here:
www.dormakaba.xxx/xxx

Horizontal sliding walls

HSW FLEX Therm

Horizontal sliding walls with thermal separation give you control of a room's climate – be it hot or cold. The sliding glass front is an excellent choice for anywhere where significant differences in temperature need to be kept apart.

The simple bolt operation on the pivot-sliding panels of the HSW FLEX Therm means the panel function can be effortlessly switched in no time at all. All other function elements are invisibly integrated into the new-design, straight-lined frame system.



Simply effective:

- Energy efficiency through improved thermal separation
- A convenient grip for changing from sliding door to door function at the pivot-sliding panel
- Straight-lined design of the framed panel with minimal visibility of operating elements
- Multi-point locking for end panel and pivot-sliding panel



For more information, see here:
www.dormakaba.xxx/xxx

HSW-R

The HSW-R sliding glass front is also ideal for anywhere where significant wind loads may occur. That makes it a good fit for display windows and store entrances outdoors. Aluminum-alloy frames support the glass on all sides, with rubber side lips and a double brush seal above and below providing additional protection.



Simply effective:

- Resistance to mechanical stress
- Reduction in weathering influences and drafts through sturdy profile frames with brush and rubber lip seals
- Aluminum-alloy frame system
- Suitable for TSG, LSG, insulating glass and special glass



For more information, see here:
www.dormakaba.xxx/xxx

Handles for sliding door, double-action and single-action door systems

Recessed pull grips, pull handles or lever handles

Be it a recessed pull grip, pull handle or lever handle: We offer a wide selection of handles for every glass door, allowing you to add that final touch to an expressive overall effect. Make a choice that fully reflects your personal taste and living style.

Recessed pull grips, are suitable for lightweight sliding doors; pull handles are well suited to more heavy-duty designs and to double-action doors. Like the diverse door lever handles for swing doors, they are not only visually appealing but feel great. And they're all made from premium materials – quality that you can feel.



MANET recessed pull grip, closed

Niro matt



MANET recessed pull grip, opened

Niro matt



Recessed pull grip conically closed on one side

Niro matt



Square pull handle

Length 300 or 500 mm, various surfaces



MANET pull handles

Length 350, 720, 1240 or 1760 mm, Niro matt



Arcos pull handles

Length 350 or 750 mm, alu. alloy EV 1 deco



BEYOND pull handles

Length 450, 600 or 900 mm, various surfaces



Lockable pull handles

Length 1225 mm, Niro matt





Mechanical Key Systems

The easiest and safest way to protect your property is to use mechanical door locks and locking cylinders. dormakaba locking systems offer you an optimal property management solution. They can also be combined with electronic locks and access systems. dormakaba owns hundreds of registered patents. dormakaba keys are not available on the open market and can only be reordered on presentation of a legitimation.





Mechanical Key Systems

Your keys are always under control.

With the rapid growth in the infrastructure sector, demand is also growing for correspondingly secure and flexible locking systems. An increasing number of access points means that several locks have to be installed, which requires efficient security and locking system management. This is exactly where dormakaba comes in with its locking systems: The systems enable customer-specific access authorizations and use access restrictions to customers' advantage.



Locking system planning

Keys are clearly assigned and it is always possible to control their circulation.



Reversible key systems

From individual locks to advanced electronically enhanced systems for complex organizations.



Optional versions for reversible key systems

A locking system for the construction phase and beyond. Thermally insulated cylinders and reversible keys in a variety of colors.



Serrated key systems

Increased key security thanks to patented key profile. Optional transponder clips for digital access systems.



Self-adjusting cylinders

The lock can be changed twice. No need to replace the cylinder when a tenant moves out or the key is lost.

Master Key Systems & Planning

dormakaba keylink planning methods

With the dormakaba keylink planning method for dormakaba penta, locking system planning is similar to an electronic system based on company organization and room zones. This means that the locking cylinders and keys are already planned during the system design phase in such a way that they can be modified or upgraded in the future.



Simply effective:

- Less organizational work in new conditions
- Manageable costs for changes and adjustments
- Access rights can be adapted as required, as new keys are issued



For more information, see here:
www.dormakaba.xxx/xxx

Reversible key systems

Reversible key systems – an overview

	dormakaba penta cross	dormakaba penta	dormakaba quattro plus	dormakaba gemini plus
Suitable for:				
Complex locking systems	●	●		
Medium and large locking systems			●	
Small and medium locking systems				●
Rows of tumbler pins	5	5	4	3
Tumbler pin pairs (per cylinder side in several levels)				
Max. 22 pin pairs plus cross element	●			
Max. 25 pin pairs		●		
Max. 22 pin pairs			●	
Max. 16 pin pairs in 32 possible positions				●
Increased key protection against 3D printing	●			-
Increased standard copy protection	●	●	●	●
European patent				
EP 2890856B1 to 2033	●	●	●	●
PCT registered until 2036	●			
Classification key according to EN 1303:2015-08				
In standard design	1/6/0/B/0/C/6/B	1/6/0/B/0/C/6/B	1/6/0/B/0/C/6/B	1/6/0/B/0/C/6/B
Option with two insert fixing bolts	1/6/0/B/0/C/6/C	1/6/0/B/0/C/6/C	1/6/0/B/0/C/6/C	1/6/0/B/0/C/6/C
Option with LAM (shim design)	1/6/0/B/0/C/6/D	1/6/0/B/0/C/6/D	1/6/0/B/0/C/6/D	1/6/0/B/0/C/6/D
Mountain Peak/brand protection				
Registration no. 14445225	●	●	●	●
VdS-certified in optional version				
Category VdS B/Category VdS BZ (+)	○	○	○	○
A key for all (door cylinders, mailboxes, furniture etc.)				
Duplicate keys only on presentation of the security card	●	●	●	●
Standard key shapes				
Smart key with design clip	●			
Smart key with standard clip		●	●	●
Optional key shapes				
LargeKey/long bow	●	●	●	●
Curved Clips design clip colors				
	12			
SmartKey clip colors				
		12	12	12
Large key				
With 7 different clip colors	○	○	○	○
Customized labels (e.g. customer logo) option	○	○	○	○
Long bow (full-metal key)				
Ideal for protective fittings and multipoint locks, customer logo option	○	○	○	○
Integration in electronic dormakaba locking systems				
Optional RFID clip (can be retrofitted), mechanical lock remains unchanged	●	●	●	●
Can be used with transponder clip in electronic access systems	○	○	○	○
Can be used in fire protection doors T30/T60/T90	●	●	●	●
Thermally insulated cylinder (TIC)	○	○	○	○
Lockable on both sides (danger function)	○	○	○	○

● Standard ○ Optional

Reversible key systems

dormakaba penta cross

The dormakaba penta cross is ideally suited to properties with high security requirements and offers protection against illegal key copies, in situations in which the holders of the keys change more often. Replacement keys can only be ordered from dormakaba via authorized specialist partners upon presentation of the legitimation.

The modular design enables quick and easy conversion to other lengths and types (e.g. double cylinder to rotary knob cylinder), with it important to note that the lock remains unchanged.



Simply effective:

- Increased protection against illegal 3D-printed key copies thanks to additional movable elements on the key
- European patent EP 2 890 856 B1, valid until 2033 (key)
- Patent applied for (cross), valid until 2036 if granted



For more information, see here:
www.dormakaba.xxx/xxx

dormakaba penta

dormakaba penta is an extremely powerful locking system and especially suitable for complex, sophisticated locking units. dormakaba penta is a purely in-house system, i.e. it will not be released even after the expiration of the patent protection for dormakaba and spare keys will continue to be manufactured exclusively by dormakaba only on presentation of the legitimation.

The modular design enables quick and easy conversion to other lengths and types (e.g. double cylinder to rotary knob cylinder), with it important to note that the lock remains unchanged.

Simply effective:

- European patent EP 2 890 856 B1, valid until 2033
- Fire protection: EI290-C according to EN 13501-2 (test in accordance with EN 1634-2)
- Standard certifications: classification key according to EN1303:2015-08
- B/O/C/6/C
- Safety standards/certificates (extended): DIN 18252-82-BZ | VdS class B and BZ for corresponding special version
- "Mountain Peak" brand protection for keys and key blanks



For more information, see here:
www.dormakaba.xxx/xxx

Reversible key systems

dormakaba quattro plus

The dormakaba quattro plus offers you extra security and increased protection against common burglary methods such as drilling, pulling, picking and bumping. The modular design enables quick and easy conversion to other lengths and types (e.g. double cylinder to rotary knob cylinder), with it important to note that the lock remains unchanged.



Simply effective:

- Replacement keys can only be ordered with the security card (legitimation)
- Various versions of the key are available (three possible key shapes and twelve different clip colors)
- Option: can be locked from both sides. If desired, can be locked on both sides (danger function), i.e. if a key is inserted and turned on the inside, it can still be locked from the outside.
- Option: LargeKey with seven different key clips and customizable sticker option
- Option: long bow (full-metal key), ideal for protective fittings and multipoint locks



For more information, see here:
www.dormakaba.xxx/xxx

dormakaba gemini plus

The dormakaba gemini plus offers you a high-level introduction to the reversible key class. The standard version offers a high level of protection against common burglary methods such as picking and bumping. The modular design enables quick and easy conversion to other lengths and types (e.g. double cylinder to rotary knob cylinder), with it important to note that the lock remains unchanged.



Simply effective:

- High security thanks to the sophisticated technology inside the locking cylinder
- The individual security card means that only you can request key copies
- Various versions of the key are available (three possible key shapes and twelve different clip colors)
- Option: lockable on both sides, even if a key is inserted on the other side
- Option: integration into electronic locking systems with RFID clip, can also be retrofitted
- Option: LargeKey with seven different key clips and customizable sticker option
- Option: long bow, ideal for protective fittings and multipoint locks with optional customer embossing



For more information, see here:
www.dormakaba.xxx/xxx

Optional versions for reversible key systems

dormakaba BAZ



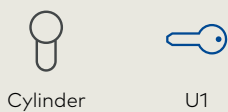
With the dormakaba BAZ cylinder, you can easily revoke the access authorization of various keys or key groups using a conversion key. You can carry out this process twice. So, whether you want to revoke a particular person's access rights or have lost a key – you can react flexibly without having to replace the locking cylinder.

Simply effective:

- The final locking system can already be used in the construction phase
- Same key for builders and future tenants
- Access rights for the builders' keys are withdrawn after the construction phase using a conversion key



All keys have access rights



Conversion key C1 is used: Pin constellation in the cylinder is modified



Access rights for K1 were revoked



Conversion key C2 is used: Pin constellation in the cylinder is modified



K1 and K2 no longer have access rights



For more information, see here:
www.dormakaba.xxx/xxx

Optional versions for reversible key systems

TIC thermally insulated cylinders

In your passive house, does condensation form on the inside of the locking cylinder? Is your door exposed to harsh weather conditions? dormakaba has developed a special solution to this: the thermally insulated locking cylinder (TIC). The TIC cylinder offers secure and convenient access in all weather conditions thanks to its integrated thermal insulation, consisting of a plastic middle section between the outside and inside of the locking cylinder.

Simply effective:

- Protection against condensation and ice formation on the inside of the cylinder
- Protection against driving rain on the outside and higher protection against drafts
- Perfect addition to passive houses and energy-efficient construction
- Secure, guaranteed access even at outside temperatures as low as -20°C



For more information, see here:
www.dormakaba.xxx/xxx

Standard reversible keys dormakaba penta and clip variants

The premium CC (Curved Clips) key clips are available in twelve colors and are supplied with the dormakaba penta (K84) system only. The standard clip color is black. The desired clip color can be selected when ordering the key.



For more information, see here:
www.dormakaba.xxx/xxx



LargeKey reversible key with large bow and clip variants

dormakaba smart key (with transponder clip) and different clips



dormakaba keys for use in standard mechanical locks and locking systems.

Simply effective:

- Large clip makes multipoint locks easier to handle
- Longer neck for protective fittings
- Long service life thanks to nickel silver design
- Smart key clips are available in six different colors
- Clip can be changed by the authorized dormakaba sales partner



Simply effective:

- Less work: You only need to manage one medium – less administration
- Seamless integration – functions with all dormakaba systems, whether mechanics, mechatronics or electronics
- Easy to upgrade – existing key clips can be easily upgraded or retrofitted
- Organization and differentiation – individual identification of key clips with easily exchangeable color markings
- With the latest RFID technology



For more information, see here:
www.dormakaba.xxx/xxx

Serrated key systems



dormakaba pextra+

Security lock cylinder with extra protection. In the dormakaba pextra plus locking system, the security of the key (key and cylinder are patented) is significantly increased by a key profile that is produced using a complex milling process and makes tampering considerably more difficult. dormakaba pextra plus is dormakaba's premium locking system in its conventional serrated key range and is suitable for complex and large locking systems with extremely high security requirements.

Simply effective:

- Key copy protection thanks to optional active pin in the cylinder
- Key clips in different colors
- Steel elements in the cylinder housing and core offer increased anti-drilling protection
- Patent-protected until 2032
- Protection against being broken open as standard
- Optional transponder clips for digital dormakaba access systems



For more information, see here:
www.dormakaba.xxx/xxx

Serrated key with smart key clip



Mechanics and electronics combined. Whether your system includes time recording or electronic access, the dormakaba smart key is capable of combining everything in a single medium. Access rights for the RFID chip in the key clip are checked by the electronic components; in mechanical cylinders, the encoding of the serrated key is used. The dormakaba smart key makes mechanical systems even more secure and removes the need for cards. Its easy handling and good reading characteristics make it convenient for daily use.

Simply effective:

- The smart key clip combines time recording, electronic access control and a mechanical cylinder
- Less work: You only need to manage one medium – less administration
- Seamless integration – compatible with mechanical and digital dormakaba systems
- Easier organization thanks to differentiation through individual labeling
- With the latest RFID technology

Serrated key systems



Standard serrated key



Serrated key with trend key clip



Serrated key with JF metal clip



For more information, see here:
www.dormakaba.xxx/xxx

Self-adjusting cylinders

SUZ

The locking cylinder can be locked with keys of three different generations, starting with keys of the first generation. By inserting and turning a second generation key 180°, the first generation keys lose their locking authorization. The third generation keys work in the same way (-> they revoke the first and second keys' locking authorization). Attention: The conversion process is carried out WITHOUT a separate conversion key.

Simply effective:

- The lock can be changed twice
- No need to replace the cylinder after a tenant moves out or the key is lost
- Saves on cost and effort
- After converting the cylinder, the old key can no longer be used



For more information, see here:
www.dormakaba.xxx/xxx



Lodging systems – for a better customer experience and increased operating efficiency

The dormakaba hotel systems ensure full control throughout the establishment. Start with our access management systems with online functions to make your guests' stay even better. Guests benefit from the modern convenience of our mobile access solution with our electronic RFID locks. Our range of external access products adds the management of employee access to hotel locking systems.

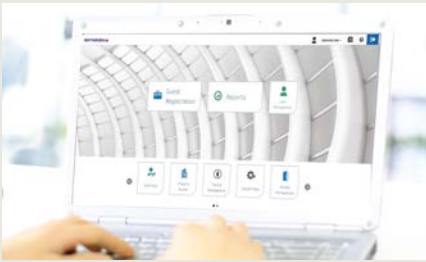




Lodging Systems

The friendly reception team: electronic locking systems and software.

Managing guests' arrival, stay and check-out is now easier thanks to the precise integration of digital components with access management solutions. This optimizes both access and comfort. Instead of individual applications, we offer complete systems for state-of-the-art access management with RFID locks and online functions for all exterior and interior doors as well as the locking systems. Guests value simplicity and security – staff value structure and efficiency.



Access control systems

Access control for the entire hotel: With the right hardware and software solution, access rights can be flexibly regulated and controlled.



Mobile access solutions

Guest and employee access via smartphone and Bluetooth as well as mobile-ready RFID hotel door locks.



Electronic hotel locks

For different hotel categories: from hotels with limited service to luxury resorts, certified according to the applicable security requirements.



External access

Access control via an external reader, for elevators, parking lot entrances and electronically controlled doors.

Access management systems

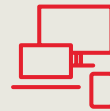


Ambience

This Windows-based access management software can be integrated in your existing PMS and configured exactly for the particular access requirements of your establishment.

Simply effective:

- Enables the remote control of the entire hotel via central terminals
- The locking system notifies the employee if doors have been left open
- Gives room cleaning instructions and indicates if battery levels are too low



For more information, see here:
www.dormakaba.xxx/xxx

Reception station Front Desk Unit (FDU)

The FDU is ideal for smaller hotels that need an independent, complete access control system.

Simply effective:

- Management of all access control processes via a central system
- Compatible with all Ilco electronic locks from dormakaba
- Also compatible with most PMS, meaning that valuable time can be saved
- Automatic data transfer from the PMS to the FDU (e.g. for fast key issuing without duplicate data entry)
- Key card encoding
- Tracking of key card data
- Lock programming
- Lock maintenance
- Lock inspection



For more information, see here:
www.dormakaba.xxx/xxx

Mobile access solutions

dormakaba's line of BLE hotel locks

The convenient, reliable and secure dormakaba mobile access solutions for guest and employee access are a secure complete application for mobile access with Bluetooth Low Energy (BLE).

Simply effective:

- Easy upgrade to RFID door locks
- All existing RFID door locks can be upgraded to RFID door locks with mobile access
- Room keys can be set up and managed on mobile devices



Enabled via LEGIC Connect

LEGIC Connect

The registration data for dormakaba mobile access is activated via LEGIC Connect.

Simply effective:

- The LEGIC Connect service is highly secure
- System can be upgraded with applications for access to parking places or elevators

Mobile access consulting and services

Mobile Access Rapid Adoption Program, Mobile Access Integrator Program, Workshops, BlueSky app

Our mobile access programs were designed specifically to meet the requirements of hotels in implementing their mobile strategy.



For more information, see here:
www.dormakaba.xxx/xxx

Electronic hotel locks

790/RT

The 790/RT RFID is a robust electronic full-body door fitting with contactless technology, which both optimizes the guest's stay and improves operating efficiency.

Simply effective:

- Fitting with anti-panic latch lock
- The lock is low-maintenance and has a battery life of three years with an integrated indicator of low battery life
- Can be retrofitted
- Compatible with the Ambience access management system
- User-friendly
- For new buildings or for retrofitting



For more information, see here:
www.dormakaba.xxx/xxx



Oracode 660



The Oracode 660 is an offline-code locking system with a special hotel anti-panic latch lock, suitable for a DIN door frame.

Simply effective:

- Code-based access system
- No need to check in at the hotel reception
- The guests can come and go as they please
- Efficient check-in and check-out
- Smart and secure

Confidant RFID

The Confidant RFID integrates perfectly into the hotel environment with its discreet, modern design. The touch-free RFID technology, combined with the elegant lines and simple aesthetic, improves the guests' stay – and is highly durable.

Simply effective:

- Lock with mobile access function
- It is very user-friendly
- Can be retrofitted
- Compatible with the Ilco and Saflok access management systems
- Battery life for up to 50,000 opening procedures or three years
- Low-maintenance

Confidant RFID Kit 1

Exterior fitting only

Confidant RFID Kit 2

Exterior and interior fitting

Confidant RFID Kit 3

Exterior and interior fitting with mortise dead lock



For more information, see here:
www.dormakaba.xxx/xxx



Concierge



The Concierge wall reader system makes for an elegant, unique guest room design. This solution allows designers to install the SR series RFID readers behind a third-party-provider wall panel, while any handle sets and locks can be attached to the door. The SR3 solution offers a minimalist solution, without the need for a complete hotel fitting on the door. The Concierge wall reader is ideal for guest rooms in new-build projects.

Simply effective:

- Contactless card reader for Mifare
- Classic or Mifare Plus media
- Control unit for electric door opener
- Online system possible
- Mobile key ready



For more information, see here:
www.dormakaba.xxx/xxx

Perimeter access

Remote access control RAC 4, SR1 and SR

The Ilco remote access control unit controls specific access points such as elevators, parking lot entrances and other doors with electrical door openers or electrical control units.



Simply effective:

- Guests can use their mobile devices as room keys
- Access control also controls entrances to elevators, parking lots and other doors with electrical doors with electric door openers or electrical control units
- Compatible with fire alarm systems



For more information, see here:
www.dormakaba.xxx/xxx





Safe Locks

For money, valuables, important documents or other sensitive items that need to be protected against unauthorized access: Choose from our unique safe lock portfolio for ATMs, gun safes, vaults, classified document storage units, fire-proof safes or other secure storage solutions. We offer full protection for your property with certified quality products.





Safe Locks

How valuables are protected:
with particularly secure locks.

Only consistent stability paired with intelligence can prevent unauthorized access to money, valuables, important documents or sensitive goods. That's why all of our safe locks have been specially developed for ATMs, weapon safes, strong rooms, classified document storage units or fireproof storage methods. We enhance the proven locking mechanisms with network-compatible electronics. Thanks to digitalization, user rights and blocking periods can be comprehensively controlled. Clear, controllable and certified.



Electronic safe locks

Digitally enhanced mechanics, suitable for the desired level of security for complex assignments.



Mechanical safe locks

Double-bit keys or number combinations up to and including resistance class C are available.



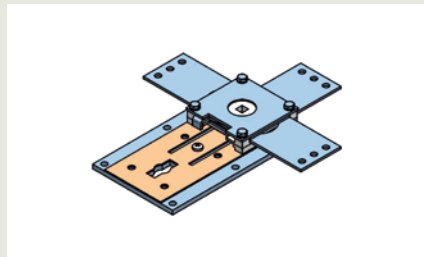
Electronically controllable key locks

Patented electromechanics for externally controlled processes with up to ten million different combinations.



Safe deposit box locks

Bank and renter lock, single-bit or double-bit key, purely mechanical or electronic.



Bolt work

Patented security features for secure storage units in resistance classes 0–VII.



Other safe components and accessories

Safe door hinges, tamper protection, operating elements, handles, key rosettes and dial & ring combinations.

Electronic safe locks

Paxos series

Paxos advance IP safe locks are ideally suited for use in high-security areas thanks to their redundant design. The additional network capability, paired with various configurable user rights and blocking periods, makes it a widely used standard for banks and insurance companies.



For more information, see here:
www.dormakaba.xxx/xxx



Rotary knob version



Keypad version



Lock unit



Lock unit IP box



Axessor series

The Axessor series offers the ideal security lock for all ATMs and safes. Whether in stand-alone mode or via LAN for networked safe locks, the Axessor series offers the right product for all applications.



For more information, see here:
www.dormakaba.xxx/xxx



Axessor CIT

The Axessor CIT is an additional modular, upgradeable network lock that can be operated individually or in combination with several thousand safe locks.



Axessor IP

Axessor IP allows locks to be centrally monitored and settings to be quickly adapted to changing operational requirements. This reduces travel and administrative costs, increases security personnel productivity and improves the control of safe locks.



Axessor USB

The Axessor USB electronic safe lock has been developed in line with the "all-in-one" concept and offers extensive functions for medium to higher security requirements.

Electronic safe locks

Cencon ATM

The system, specially developed to secure ATMs, works with a one-off, constantly changing code and controls, registers and acknowledges every lock access. A personal key (smart key) and an individual profile is assigned to every employee, thus effectively preventing insider crime.



For more information, see here:
www.dormakaba.xxx/xxx



Input unit with keypad on top



Swing bolt



Dead bolt

Auditcon series

The Auditcon series was specially developed for the security requirements of the retail trade as well as for commercial and industrial sectors. Thanks to the unique PowerStar™ technology, neither batteries nor other power supplies are required. The required power is generated internally by turning the knob.



For more information, see here:
www.dormakaba.xxx/xxx



Auditcon 552

The 552 model is designed for challenging applications that require time lock functions and event memories with time reference. The opening time windows can be programmed using the Auditcon 2 software and transmitted to the lock by the electronic key.



Auditcon 252

The 252 model is ideal for applications in which several people need to share access to a secure storage unit. The event memory ensures that everything is fully logged and traceable.



Auditcon 52

The 52 model is equipped with all the basic functions and is ideal for both domestic and commercial applications that require electronic safe access. The T52 is also fitted with opening delay functions.

Electronic safe locks

MAUER series



For more information, see here:
www.dormakaba.xxx/xxx



MAUER Combi B 30

Electronic combination lock with dead bolt and mechanical redundancy. Particularly suitable for secure storage units in classes CEN III–V.

The Combi B 30 is the successor to the popular Code Combi B.

In addition to a completely redesigned and more user-friendly fitting design, the lock also offers a significantly broader range of functions. The integrated mechanical redundancy guarantees the highest level of operational security: By simply removing the rotary handle, the concealed keyhole is exposed and the lock can be opened with the double-bit key.

Software with which the lock's event memory can be read or all programming processes easily carried out is also available.



MAUER Code-Combi K

Electronic combination lock with dead bolt for secure storage units in classes CEN 0–II with approx. 1,000,000 possible combinations.

The user can program a maximum of two six-digit codes. By using the power-saving magnet hold-open technology, approx. 30,000 opening cycles can be activated with one battery, under selected operating conditions.

A three-sided lock is also available, if required.

LA GARD series



For more information, see here:
www.dormakaba.xxx/xxx



LA GARD AuditGard 66E

In addition to its basic functions, the AuditGard series offers extensive user and audit functions. Customer-specific settings must be programmed using PC software. The optional eKey function enables an opening that, in addition to the opening code, also needs the copy-protected eKey. Various metal input units are available with non-slip silicone or sturdy membrane keypad.



LA GARD ComboGard Pro 39E

As a further development of the ComboGard series, the Pro version offers customer-specific function programming using an input unit or PC setup software. Various metal input units are available with non-slip silicone or sturdy membrane keypad.



LA GARD Basic

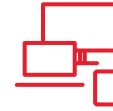
The Basic series has basic functions which enable very user-friendly operation. Various metal input units are available with non-slip silicone or sturdy membrane keypad.

Depending on the safe design, the lock systems can be supplied with either a dead bolt or a swing bolt. With the patented, spindle-less swivel bolt technology, the bolt is pushed back by actuating the bolt work. A separate, manual bolt opening is therefore not necessary.

Mechanical safe locks

MAUER series

Our double-bit locking technology for safe locks benefits from established, reliable technology. It has proved its worth particularly for secure storage units of all types up to resistance class X.



For more information, see here:
www.dormakaba.xxx/xxx



MAUER Primus C

Safe lock with up to 13,000,000,000 possible combinations



MAUER Varos

Adaptable safe lock with "mini-bit" round key



MAUER Variator B

Adaptable safe lock with approx. 60,000,000 possible combinations



MAUER Variator A

Adaptable safe lock with approx. 280,000 possible combinations



MAUER Convar B

Adaptable safe lock with optional three-sided lock



MAUER President A

Adaptable safe lock with approx. 280,000 possible combinations



MAUER Curator 80

Lock, prepared for profile cylinder



MAUER Tricontus A

Safe lock in three-pin design



MAUER Vary Flex

Adaptable safe lock with approx. 78,000 possible combinations and further options



MAUER Centurio A

Safe lock with flat bolt and vertical bascule lock



MAUER Arator

Very compact safe lock with approx. 280,000 possible combinations



MAUER Novum TD

Mechanical delayed opening safe lock with latch bolt

LA GARD series

If you prefer the traditional, tried-and-tested disc wheel technology, we recommend our mechanical combination locks. The area of application for this product group is secure storage units of all types up to resistance class V.



LA GARD 2270

Adaptable safe lock with approx. 160,000 possible combinations



LA GARD 1985

Adjustable three-disc combination lock for secure storage units in classes CEN III–V



LA GARD 3390V

Adjustable three-disc combination lock for secure storage units in classes CEN III–V



LA GARD 3390S

Adjustable three-disc combination lock for secure storage units in classes CEN I–II



LA GARD 1947

Adjustable four-disc combination lock for secure storage units in classes CEN VI–X



For more information, see here:
www.dormakaba.xxx/xxx

Electronically controllable key locks

MAUER series

The mechatronic double-bit locking systems are mainly used in customer-specific control units, where, with their patented lock and unlock functions, they can be easily integrated.



For more information, see here:
www.dormakaba.xxx/xxx



MAUER Varios E Flex

Adaptable, electronically controlled safe lock with approx. 390,000 possible combinations and further options



MAUER Variator B

Adaptable, electronically controlled safe lock with approx. 10,000,000 possible combinations

Safe deposit box locks

MAUER series

The safe deposit box locks are mainly used for rented bank safe deposit box systems. We offer a variety of solutions that can be integrated into various security concepts.



For more information, see here:
www.dormakaba.xxx/xxx



MAUER Deposit 20

Safe deposit box lock with bank and renter lock with two keyholes



MAUER Combi Deposit

Semi-adaptable safe deposit box lock with combination lock and key lock box



MAUER Deposit 10

Safe deposit box lock with bank and renter lock with one keyhole



MAUER Deposit

Safe deposit box lock with electronic bank lock



MAUER E-lo-safe M

Semi-adaptable safe deposit box lock with bank lock and renter lock



MAUER E-lo-safe S

Electronically controllable safe deposit box lock with double bit technology



MAUER Deposit E

Mailbox lock with flat bolt and one-touch key



MAUER E-lo-safe D

Electronically controlled safe deposit box lock with rotary knob



MAUER Deposit D

Mailbox lock with flat bolt and double-bit key



MAUER E-lo-safe C

Electronically controllable safe deposit box lock with cylinder lock

Bolt work



MAUER series

The special feature of our popular bolt work solutions is their patented security features. They are installed in secure storage units in resistance classes 0–VII. Tell us what you need – we'll find it.



For more information, see here:
www.dormakaba.xxx/xxx



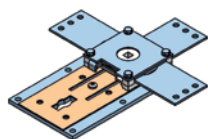
MAUER Defender 520

The four-sided bolt mechanism is characterized by a smooth-running gear wheel drive.



MAUER Defender 720

One to three-sided lock for secure storage units in classes CEN II–V



MAUER Defender M3

Three-sided lock for secure storage units with smooth-running gear wheel drive. The bolt work has an integrated relocker and a manganese steel drill protection plate



MAUER Defender 210

The four-sided bolt mechanism is characterized by a smooth-running gear wheel drive.



MAUER Defender modules

The four-sided bolt work family is characterized by its patented modular system. The Defender Module 1 is designed in one-lock mode for cabinets in classes CEN 0–II.

Other safe components and accessories

MAUER series

In addition to the safe locks, dormakaba offers a comprehensive range of security cabinet components and security cabinet accessories.



For more information, see here:
www.dormakaba.xxx/xxx



MAUER Relino 181
Heavy-duty, height-adjustable safe door hinge with axial and radial spherical bearings



MAUER Relino 131 A
Safe door hinge with cable lead through for plane/docked installation applications



MAUER Relino 71
Standard safe door hinge



MAUER Relino 131 K
High-quality safe door hinge with maintenance-free bearing bushes



MAUER Arvant R
Filling device set as tamper protection for a key lock



MAUER Servant R
Operating element and tamper protection of the 70011 Primus C



MAUER Servant K
Operating element and tamper protection of a key lock

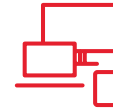


MAUER Vecto
Key guide for standard key

Handles and key rosettes

MAUER series

Our range of fittings and locks is rounded off by our selection of handles. Opt for the high-quality aluminum handle solutions in timeless designs or choose from our line of plastic designs. As functional and design elements, escutcheons complement safe doors and are suitable for use with mechanical double-bit locks.



For more information, see here:
www.dormakaba.xxx/xxx



MAUER Vesta 145
Chrome-plated die-cast handle,
145 mm



MAUER Juno 115
Polished aluminum handle, 115 mm



MAUER Talos 210
Polished aluminum handle, 210 mm



MAUER Ceres 163
Polished aluminum handle, 163 mm



MAUER Univers
Two-tone handle in high-quality
plastic



Elos 125
Chrome-plated die-cast handle,
125 mm



Pallas
Black coated die-cast handle,
diameter 100 mm



Ilos
Polished aluminum handle, diameter
156 mm



Alea K
Polished aluminum fold-down handle
with finger grip, diameter 97 mm



MAUER Stega 50
Polished aluminum rosette,
diameter 50 mm



MAUER Stega 63
Polished aluminum rosette,
diameter 63 mm



MAUER Stega Univers
Two-color rosette with adjustable
key guide made of high-quality
plastic

Dial & ring combinations

MAUER series and LA GARD series

Our dial & ring combinations are made of high-quality shell-cast aluminum or die-cast zinc. They are used to operate mechanical combination locks.



MAUER Depravo K

Dial & ring combination in polished aluminum, top reading, diameter 88 mm



LA GARD 2107

Conical dial & ring combination, diameter 76 mm



LA GARD 1777-1779

Conical dial & ring combination, diameter 95 mm
(can be locked if required)



LA GARD 1730-1731

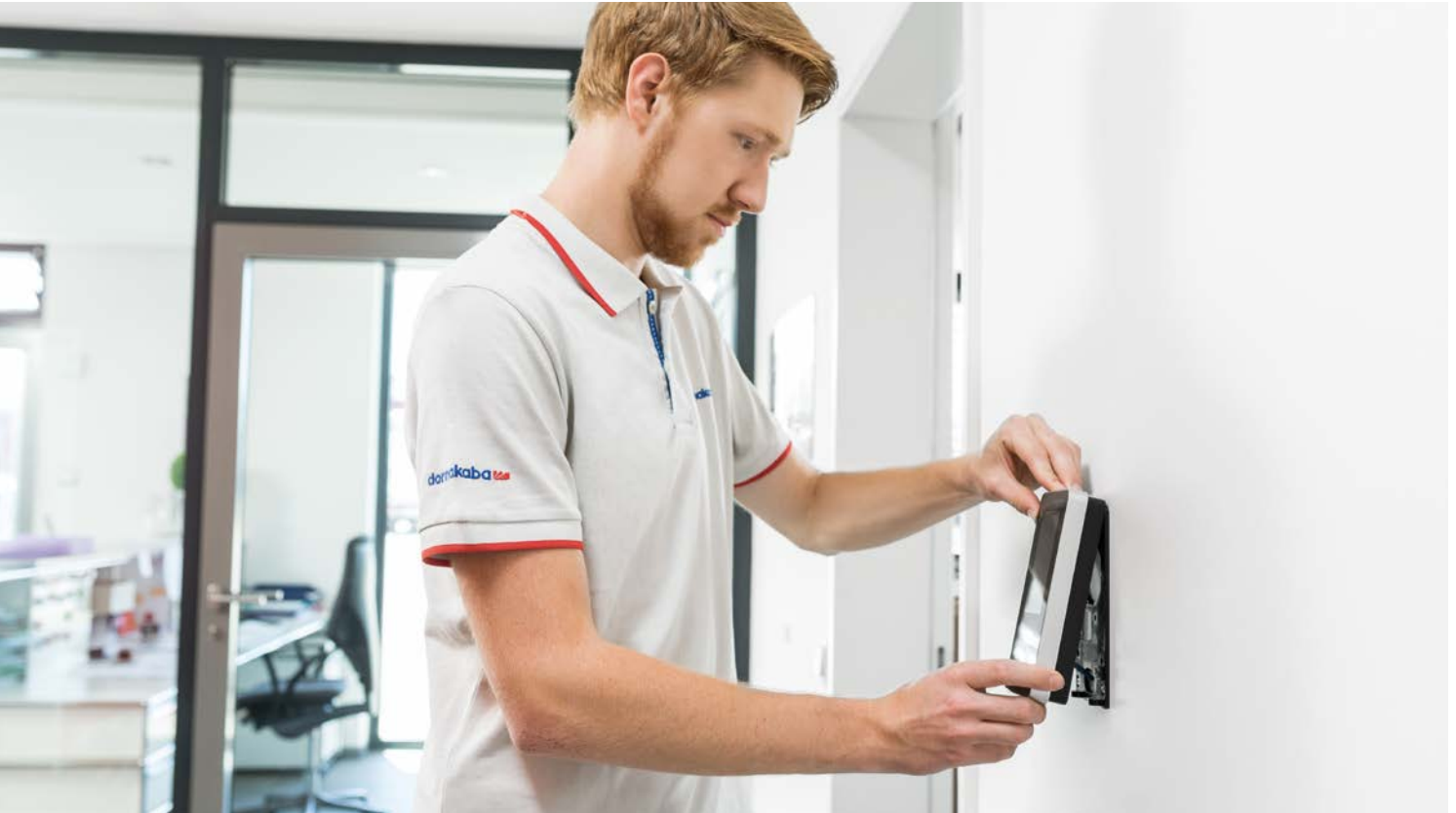
Conical dial & ring combination, top reading, diameter 74 mm
(can be locked if required)



LA GARD 2085-2090

Conical dial & ring combination, top reading, diameter 96 mm,
(can be locked if required)

Service



There is no alternative to ensuring full functionality in all door systems. The basis for this is a long lifespan and quality. But where high numbers of people move around, things can always go wrong. It's nice to know that there will be no delays. A properly functioning equipment is part of the service. The lifespan and quality of door systems across the entire life cycle is a prerequisite for a smooth operation of a building. But life can be unpredictable. And that's exactly what our rapid response service is for.

dormakaba can offer you customized maintenance contracts for many product areas. In this context, we guarantee to provide rapid-response support and repairs. The dormakaba service team is made up of experienced, highly qualified and trained service technicians. Whatever happens, there's always an appropriate solution. Starting with the service hotline. Competent "first-aiders" are there to take your calls.



For more information, see here:
www.dormakaba.xxx/xxx



Our service spectrum for Entrance Systems and Door Hardware:

- Checking, inspection, maintenance
- Repairs and troubleshooting
- Upgrades and modernisation
- Flexible help and short response times in the event of faults
- dormakaba original and third-party spare parts directly from our spare parts centre
- Advice on legal operator requirements and safety regulations
- Maintenance and repair of units across manufacturers

Our service spectrum for Electronic Access & Time:

- Maintenance of everything relating to doors and your system
- Repairs and troubleshooting
- Modernisations
- Advice on security-related issues and access control
- Workshops on access and time
- Advice on time management issues
- Workshops on system change
- Advice on spare parts selection and replacement

Sustainability

How do we look at the world?

With full responsibility.

Sustainability can be integrated. In our overall value added chain, we harmonise economic, ecological and social responsibility. The result: the future can be found already in today's solutions.



The Environmental Product Declaration (EPD) is a worldwide industrial standard. EPDs create transparency along a product's whole life cycle.

Sustainability as a success factor. To become an industry leader, you need to utilise transparent reporting and acknowledged product declarations. When it comes to us, you rest assured that we offer sustainability in all aspects. In order for us to continuously improve, we are looking for open and transparent dialogue with all stakeholder groups - and you.

Certification and declaration. We are aware of our environmental role. Building certification systems are a key factor in the global construction industry. We support the requirements of building certification systems, by providing Environmental Product Declarations (EPD), among other things, for an extensive portfolio.

Proactive planning. Those who wish to build in a sustainable manner, need to use flexible product solutions. With our modular access solutions, you have the option to not only save resources, but make the people in the building feel more at home.

Enjoy saving energy. Thanks to our sophisticated product systems, accessibility can be combined with thermal division. For example, thanks to improved thermal separation of profiles, automatic sliding doors offer very high insulation values. Reducing energy consumption is practised sustainability.

Our stance:

Sustainability as foundation

Actions

We reduce the environmental impact of production. We comply with environmental laws and regulations. Safe and healthy workplaces are fundamental for us.

Products

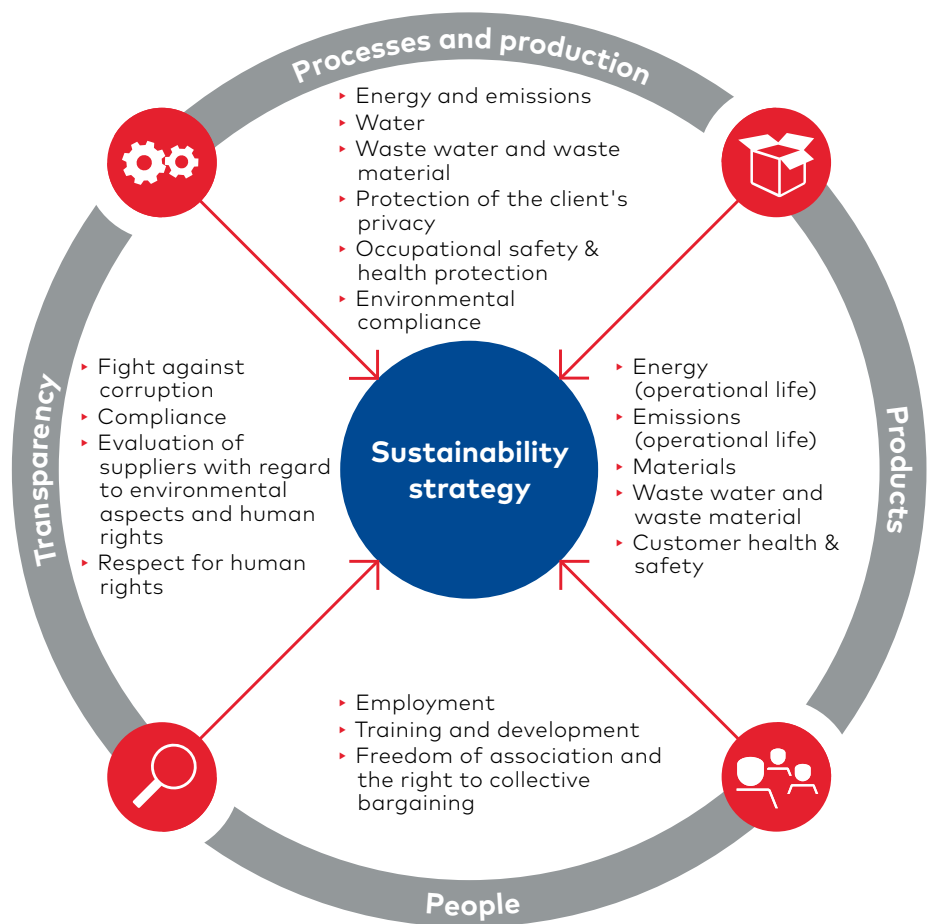
We always strive to offer a reliable product. We act so that our customers' environmental impact can be reduced – thanks to material- and energy-efficient products.

People

We offer fair working conditions. Our employees can and should contribute their strengths and expand their skills. We believe in each individual's commitment.

Transparency

We see ourselves as a responsible member of society. Compliance with international conventions, laws and internal company rules is of central importance to us.



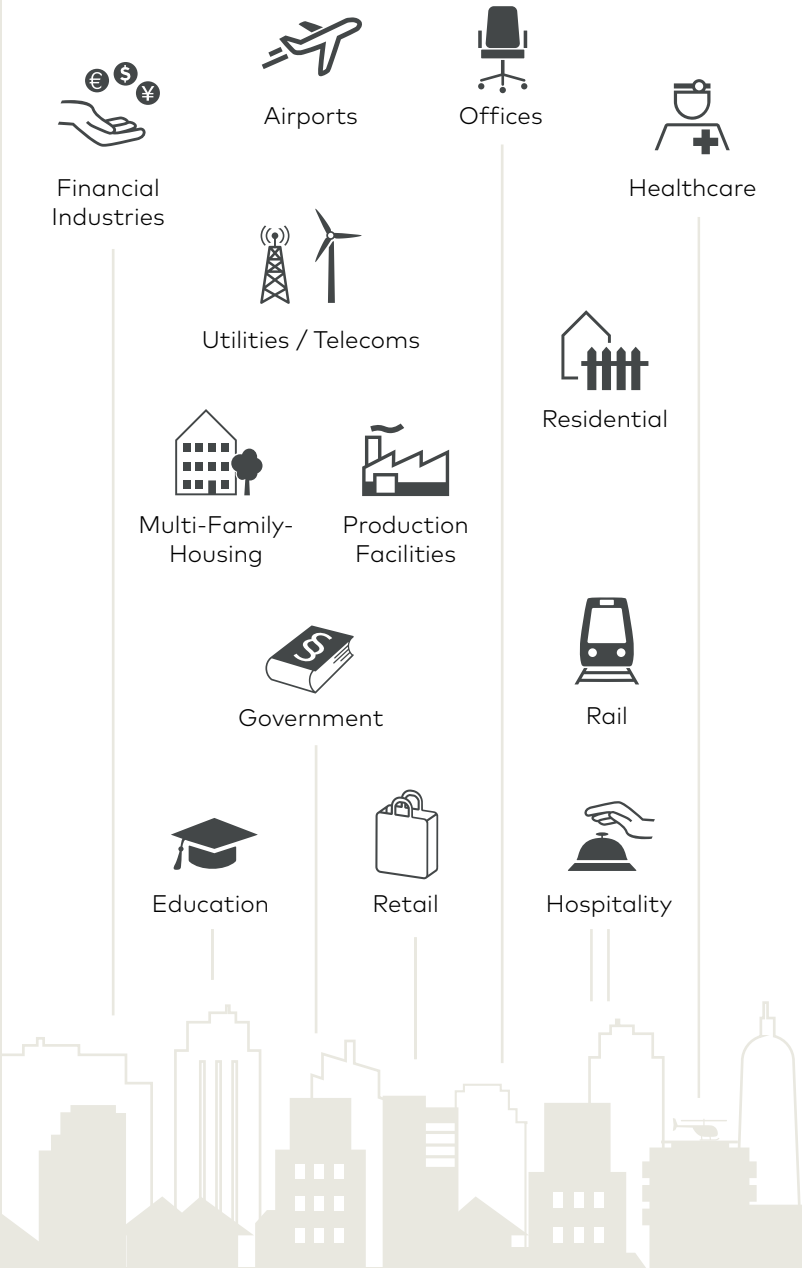
We make access in life smart and secure

Our Offering

- Door Hardware
- Entrance Systems
- Electronic Access & Data
- Interior Glass Systems
- Mechanical Key Systems
- Lodging Systems
- Safe Locks
- Key Systems
- Movable Walls
- Service

- +
- Consulting
 - Planning
 - Realization
 - Operation
 - Maintenance

Our Focused Industries



Our Values

Customer first

We always focus what we do on the needs of our customers, partners and users.

Curiosity

We constantly scout for trends as the inspiration for future-focused solutions.

Performance

We go the extra mile to ensure customer satisfaction and set the bar high in terms of security, quality and reliability.

Courage

We are committed to continuously developing solutions that generate genuine added value for our customers and users.

Trust

Our core corporate value is at the heart of everything we do, so customers can rest assured that they are in good hands.

Our Company

More than

150

years of experience

130
countries

16,000
employees

ISO 9001
Certificate



More than

2,000

patents



Sustainability Report
GRI Standards



stock-listed at
SIX Swiss Exchange (DOKA)

We call it
trusted access



**Door
Hardware**



**Electronic
Access & Data**



**Mechanical
Key Systems**



Lodging Systems



**Entrance
Systems**



**Interior Glass
Systems**



Safe Locks



Service

**dormakaba
International Holding AG**
Hofwissenstrasse 24
CH-8153 Rümlang
T +41 44 818 90 11
info@dormakaba.com
www.dormakaba.com